

LOC/DME I-AFJ 110.3 Chan 40	APP CRS 273°	Rwy Idg TDZE 1184 Apt Elev 1184
--	------------------------	---

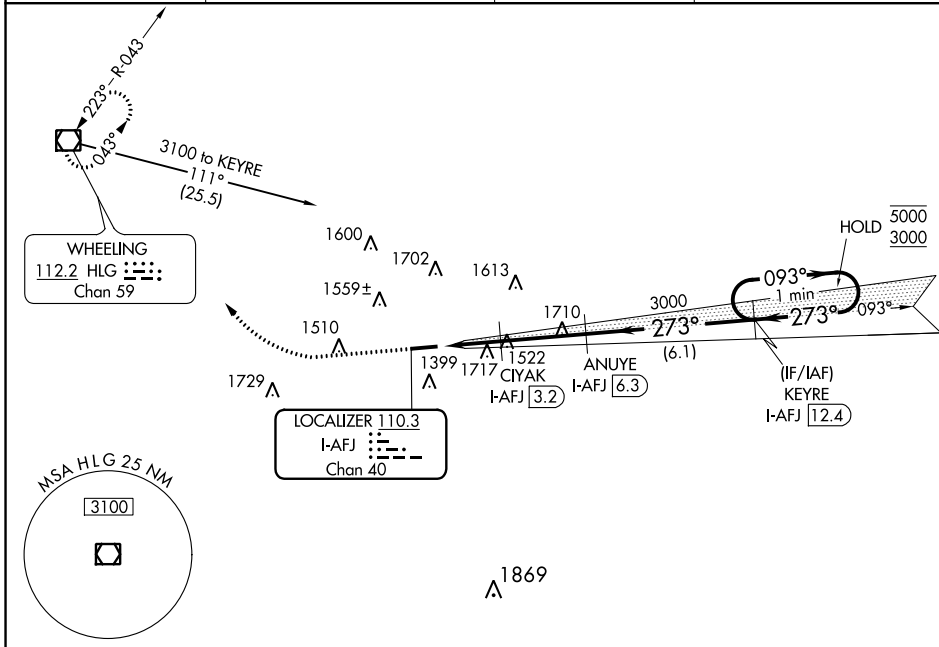
ILS or LOC RWY 27
WASHINGTON COUNTY (AFJ)

DME required. RADAR required for procedure entry.

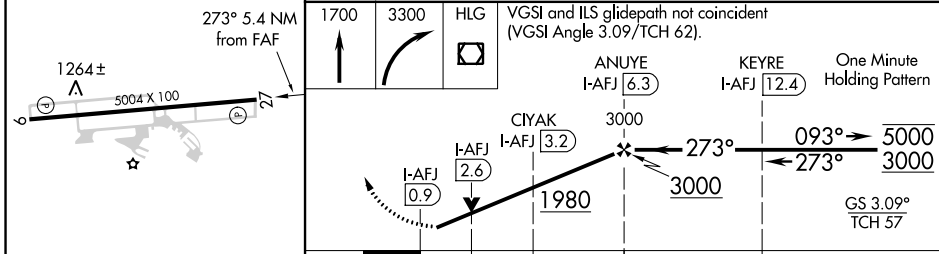
⚠ NA Circling NA for Cat D N of Rwy 9-27. Rwy 27 helicopter visibility reduction below 3/4 NA. Circling Rwy 9 NA at night.

MISSED APPROACH: Climb to 1700 then climbing right turn to 3300 direct HLG VOR/DME and hold.

AWOS-3PT 119.175	PITTSBURGH APP CON 119.35 285.575	CLNC DEL 127.3	UNICOM 122.975 (CTAF) 0
----------------------------	---	--------------------------	-----------------------------------



ELEV 1184	TDZE 1184
-----------	-----------



CATEGORY	A	B	C	D
S-ILS 27	1386-3/4 202 (300-3/4)			
S-LOC 27	1780-1	596 (600-1)	1780-1 3/4	596 (600-1 3/4)
C CIRCLING	1800-1 616 (700-1)	2020-1 1/4 836 (900-1 1/4)	2020-2 1/2 836 (900-2 1/2)	2040-2 3/4 856 (900-2 3/4)

NE-4, 16 JUN 2022 to 14 JUL 2022

NE-4, 16 JUN 2022 to 14 JUL 2022