

NDB GUY <b>275</b>	APP CRS <b>177°</b>	Rwy Idg <b>5904</b>
		TDZE <b>3125</b>
		Apt Elev <b>3125</b>

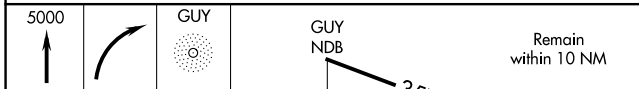
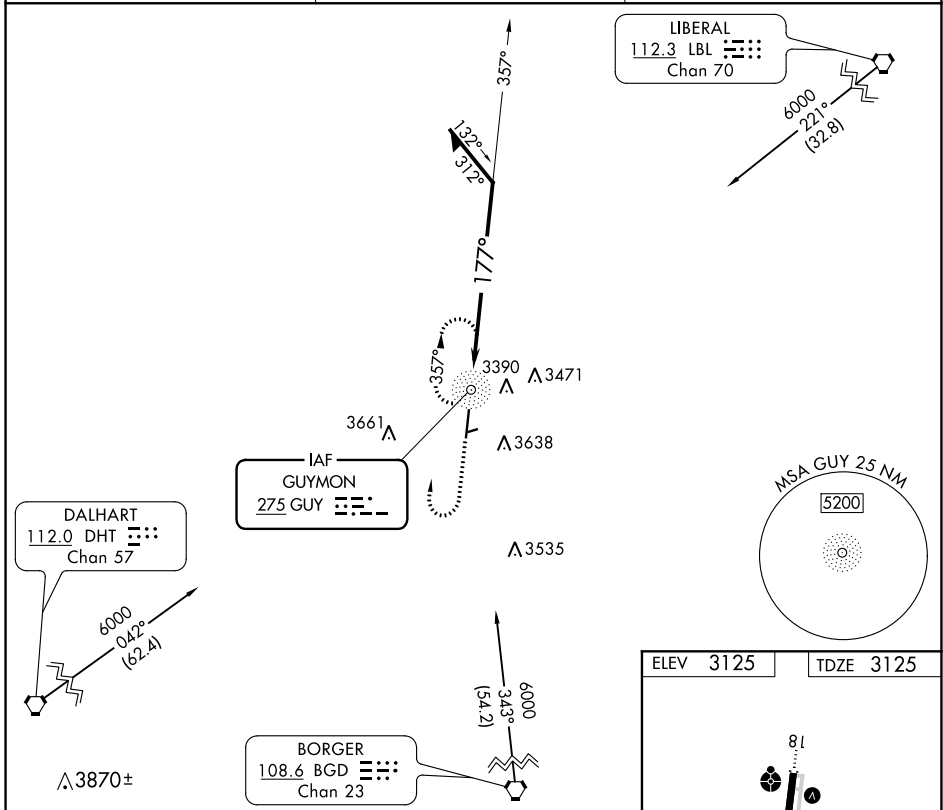
# NDB RWY 18

GUYMON MUNI (GUY)

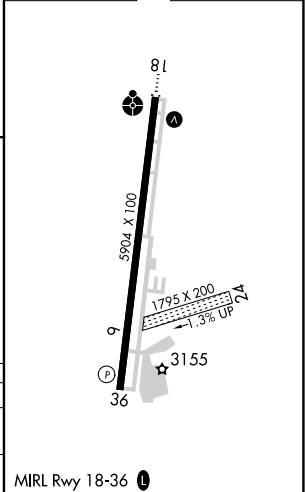
**NA** Circling NA east of Rwy 18-36. When local altimeter setting not received, use Liberal altimeter setting and increase all MDAs 120 feet and visibility Cats A and C ½ SM. Circling NA to Rwys 6 and 24.

**ODALS** MISSED APPROACH: Climb to 5000 then right turn direct GUY NDB and hold.

ASOS <b>119.925</b>	KANSAS CITY CENTER <b>134.0 257.625</b>	UNICOM <b>122.7 (CTAF) 0</b>
------------------------	--	---------------------------------



ELEV 3125	TDZE 3125
-----------	-----------



CATEGORY	A	B	C	D
S-18	3900-1 775 (800-1)	3900-1¼ 775 (800-1¼)	3900-2½ 775 (800-2½)	NA
CIRCLING	3900-1 775 (800-1)	3900-1¼ 775 (800-1¼)	3980-2½ 855 (900-2½)	NA

SC-1, 16 JUN 2022 to 14 JUL 2022

SC-1, 16 JUN 2022 to 14 JUL 2022