

WAAS CH 50525 W36A	APP CRS 357°	Rwy Idg TDZE Apt Elev	5904 3125 3125
--	------------------------	-----------------------------	---

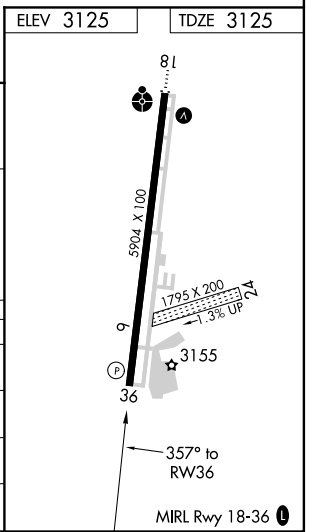
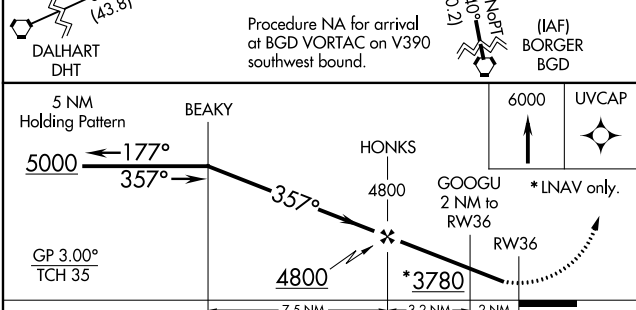
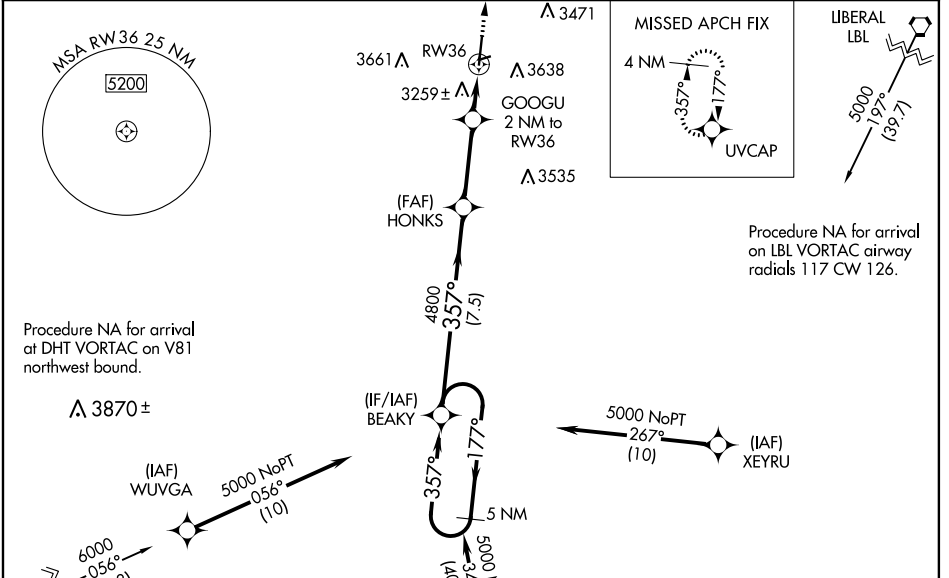
RNAV (GPS) RWY 36

GUYMON MUNI (GUY)

⚠ Baro-VNAV NA when using Liberal altimeter setting. For uncompensated Baro-VNAV systems, LNAV/VNAV NA below -21°C (-5°F) or above 54°C (130°F). Circling NA East of Rwy 18-36. DME/DME RNP-0.3 NA. Rwy 36 helicopter visibility reduction below ½ SM NA. When local altimeter setting not received, use Liberal altimeter setting: Increase LPV DA to 3488 feet; increase LNAV/VNAV DA to 3697 feet; increase all MDAs 120 feet and visibility Cat C ½ SM. Circling NA to Rwys 6 and 24.

MISSED APPROACH:
Climb to 6000 direct UVCAP and hold.

ASOS 119.925	KANSAS CITY CENTER 134.0 257.625	UNICOM 122.7 (CTAF)
------------------------	--	-------------------------------



CATEGORY	A	B	C	D
LPV DA	3375-1 250 (300-1)			NA
LNAV/VNAV DA	3584-1 ½ 459 (500-1 ½)			NA
LNAV MDA	3520-1	395 (400-1)	3520-1 ½ 395 (400-1 ½)	NA
CIRCLING	3580-1	455 (500-1)	3980-2 ½ 855 (900-2 ½)	NA

SC-1, 16 JUN 2022 to 14 JUL 2022

SC-1, 16 JUN 2022 to 14 JUL 2022