

WAAS CH 86537 W11A	APP CRS 116°	Rwy Idg TDZE 718 Apt Elev 722	6501
--	------------------------	---	-------------

RNAV (GPS) RWY 11

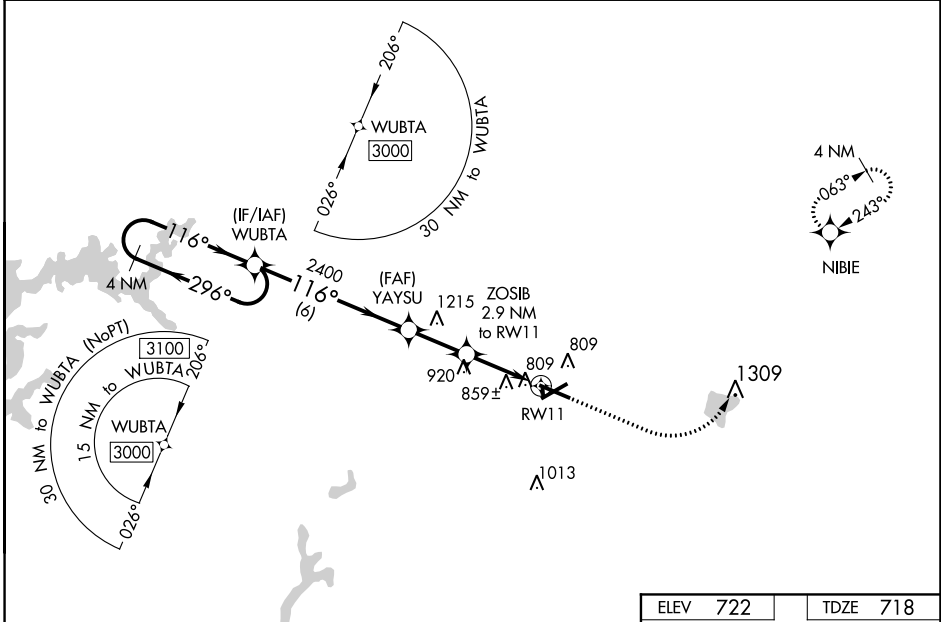
COLES COUNTY MEML (MTO)

RNP APCH.

▼ When local altimeter setting not received, use Champaign/Urbana altimeter setting and increase all DA 82 feet, increase all MDA 100 feet, and increase LPV all Cats visibility 1/8 mile, LNAV/VNAV all Cats visibility 3/8 mile, LNAV Cats C and D and Circling Cat C visibility 1/4 mile, and Circling D visibility 1/2 mile. For uncompensated Baro-VNAV systems, LNAV/VNAV NA below -19°C or above 54°C. Baro-VNAV and VDP NA when using Champaign/Urbana altimeter setting. Circling NA to Rwys 18 and 36.

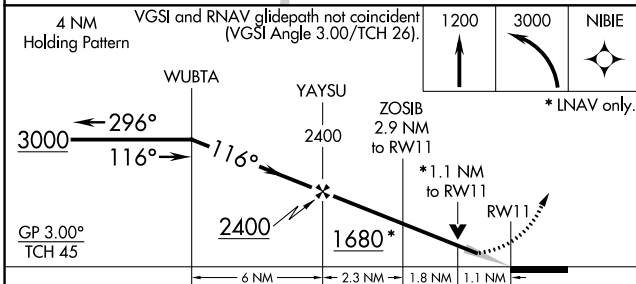
MISSED APPROACH:
Climb to 1200 then climbing left turn to 3000 direct NIBIE and hold.

ASOS 118.475	CHAMPAIGN APP CON ★ 132.85 290.225	UNICOM 122.7 (CTAF) ☉
------------------------	--	---------------------------------



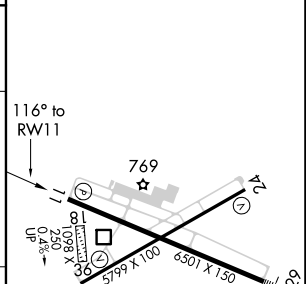
EC-3, 16 JUN 2022 to 14 JUL 2022

EC-3, 16 JUN 2022 to 14 JUL 2022



ELEV 722	TDZE 718
----------	----------

CATEGORY	A	B	C	D
LPV DA	918-3/4 200 (200-3/4)			
LNAV/VNAV DA	1175-15/8 457 (500-15/8)			
LNAV MDA	1120-1	402 (400-1)	1120-11/8	402 (400-11/8)
C CIRCLING	1160-1 438 (500-1)	1180-1 458 (500-1)	1240-11/2 518 (600-11/2)	1380-2 658 (700-2)



MIRL Rwy 6-24 ☉
HILL Rwy 11-29 ☉
REIL Rwys 6, 11, and 24 ☉