

| | | | |
|--|------------------------|---|-------------|
| WAAS CH 42616 W02A | APP CRS 022° | Rwy Idg TDZE 696 Apt Elev 699 | 3501 |
|--|------------------------|---|-------------|

RNAV (GPS) RWY 2

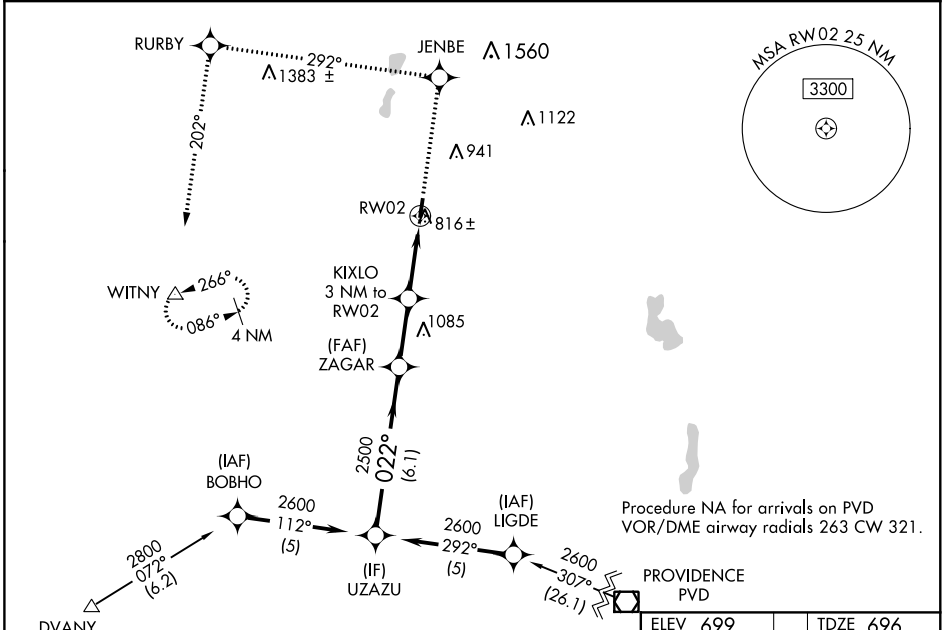
SOUTHBRIDGE MUNI (3B0)

NA DME/DME RNP-0.3 NA. Circling Rwy 20 NA at night.
 Use Worcester altimeter setting, when not received use Bradley Intl altimeter setting and increase all DA 72 feet and all MDAs 80 feet, increase LPV all Cats and LNAV Cat C visibility 1/2 SM, and Circling Cat C visibility 1/2 SM.

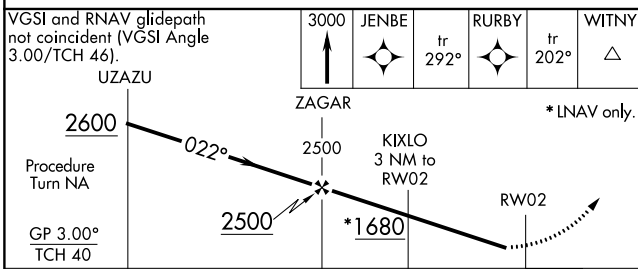
MISSED APPROACH: Climb to 3000 direct JENBE and via track 292° to RURBY and via track 202° to WITNY and hold.

YANKEE APP CON
119.0 327.1

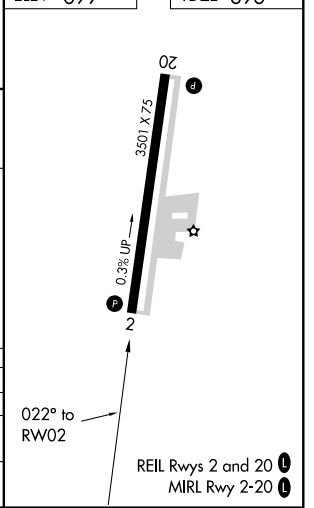
UNICOM
122.8 (CTAF)



| | |
|----------|----------|
| ELEV 699 | TDZE 696 |
|----------|----------|



| CATEGORY | A | B | C | D |
|-------------------|--------------------|-----------------|----------------------------|----|
| LPV DA | 1018-1 1/4 | 322 (400-1 1/4) | | NA |
| LNAV MDA | 1300-1 604 (700-1) | | 1300-1 1/4 604 (700-1 1/4) | NA |
| C CIRCLING | 1360-1 661 (700-1) | | 1360-1 1/4 661 (700-1 1/4) | NA |



NE-1, 16 JUN 2022 to 14 JUL 2022

NE-1, 16 JUN 2022 to 14 JUL 2022