

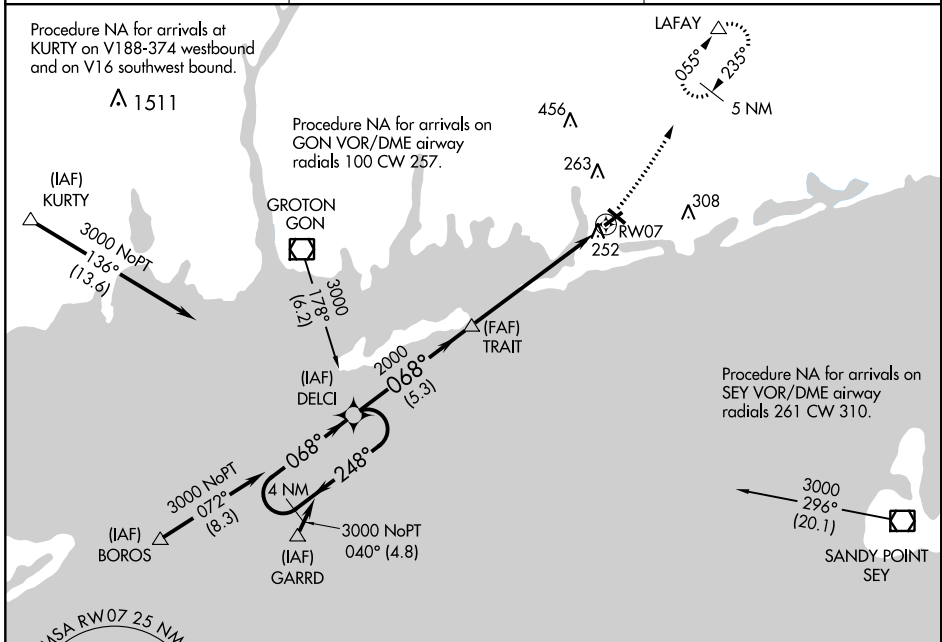
APP CRS 068°	Rwy Idg 4010
	TDZE 76
	Apt Elev 81

RNAV (GPS) RWY 7

WESTERLY STATE (WST)

▼ Inoperative table does not apply. DME/DME RNP-0.3 NA.	MALSF 	MISSED APPROACH: Climbing left turn to 2100 direct LAFAY and hold.
▲ NA		

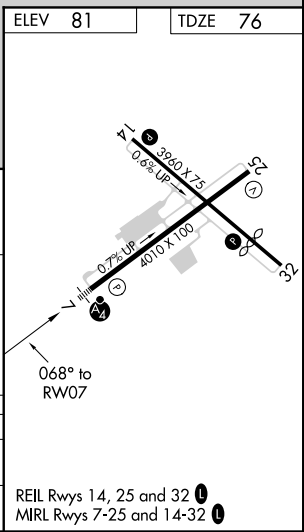
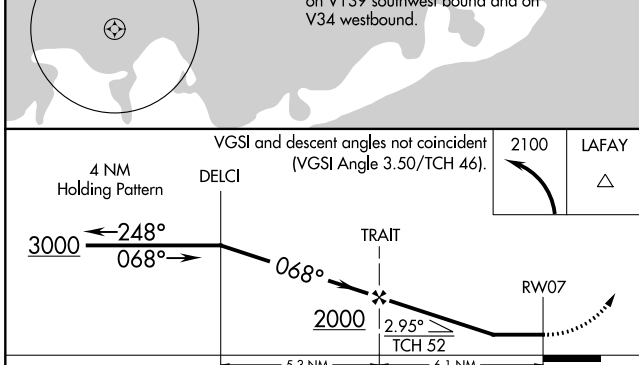
ASOS 132.375	PROVIDENCE APP CON ★ 119.45 319.2	UNICOM 123.0 (CTAF) 0
------------------------	---	---------------------------------



NE-1, 16 JUN 2022 to 14 JUL 2022

NE-1, 16 JUN 2022 to 14 JUL 2022

ELEV 81	TDZE 76
---------	---------



CATEGORY	A	B	C	D
LNVA MDA	520-1 444 (500-1)		520-1½ 444 (500-1½)	520-1½ 444 (500-1½)
CIRCLING	580-1 499 (500-1)		720-1¾ 639 (700-1¾)	760-2¼ 679 (700-2¼)

REIL Rwy 14, 25 and 32 **0**
MRL Rwy 7-25 and 14-32 **0**