

WAAS CH <b>50407</b> <b>W18A</b>	APP CRS <b>180°</b>	Rwy Idg TDZE Apt Elev	<b>5503</b> <b>800</b> <b>801</b>
--	------------------------	-----------------------------	---

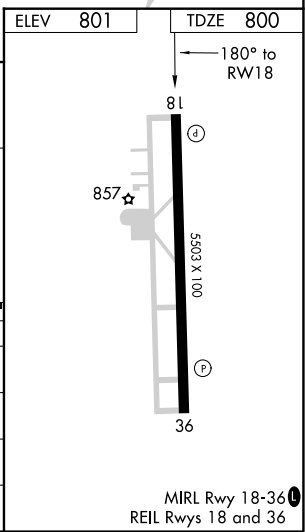
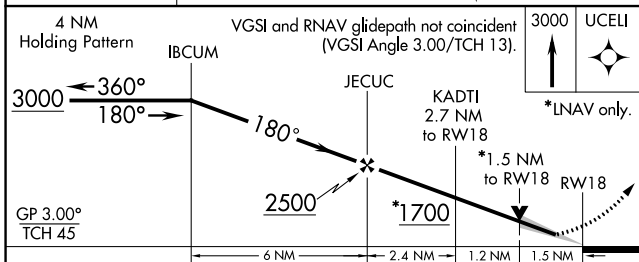
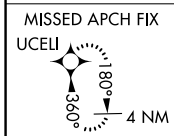
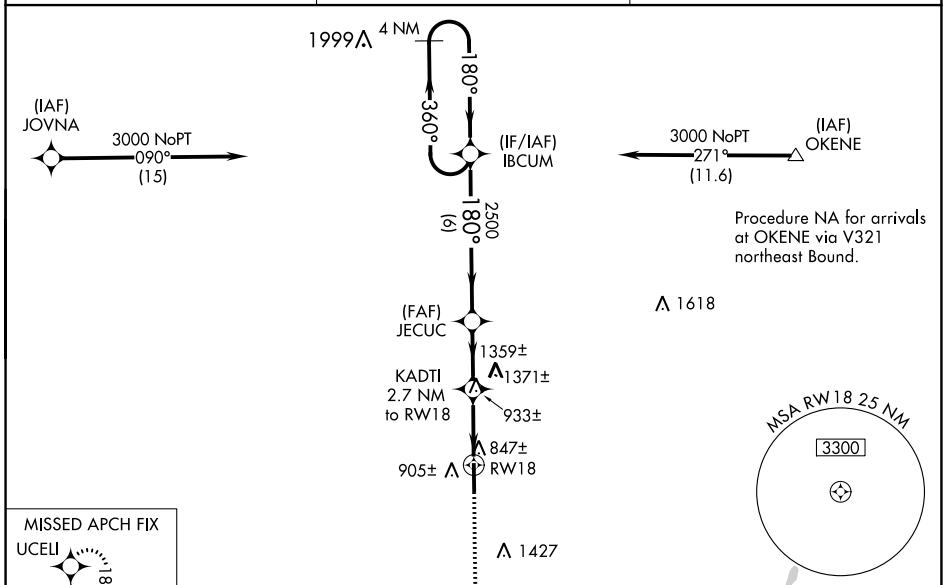
# RNAV (GPS) RWY 18

BOMAR FLD/SHELBYVILLE MUNI (SYI)

**⚠** When local altimeter setting not received, use Tullahoma altimeter setting and increase LPV DA to 1123, LNAV/VNAV DA to 1389, all MDA 80 feet, increase LPV all Cats visibility 1/2 SM, LNAV/VNAV all Cats visibility 1/4 SM and LNAV Cat C and D visibility 1/4 SM. Baro-VNAV NA when using Tullahoma altimeter setting. For uncompensated Baro-VNAV systems, LNAV/VNAV NA below -1.6°C (4°F) or above 47°C (116°F). DME/DME RNP-0.3 NA. VDP NA when using Tullahoma altimeter setting.

**MISSED APPROACH:**  
Climb to 3000 direct UCELL and hold.

AWOS-3 <b>119.275</b>	MEMPHIS CENTER <b>128.15 323.125</b>	UNICOM <b>122.8 (CTAF) 0</b>
--------------------------	---	---------------------------------



CATEGORY	A	B	C	D
LPV DA	1050-3/4		250 (300-3/4)	
LNAV/VNAV DA	1316-13/4		516 (600-13/4)	
LNAV MDA	1280-1	480 (500-1)	1280-1 1/4	1280-1 1/2
	479 (500-1)	619 (700-1)	480 (500-1 1/4)	480 (500-1 1/2)
<b>C</b> CIRCLING	1280-1	1420-1	1780-3 979 (1000-3)	
	479 (500-1)	619 (700-1)		

SE-1, 16 JUN 2022 to 14 JUL 2022

SE-1, 16 JUN 2022 to 14 JUL 2022