

SHELBYVILLE, TENNESSEE

AL-5299 (FAA)

21336

VOR/DME SYI <b>113.55</b> Chan <b>82</b> (Y)	APP CRS <b>152°</b>	Rwy Idg <b>5503</b> TDZE <b>800</b> Apt Elev <b>801</b>
--	------------------------	---

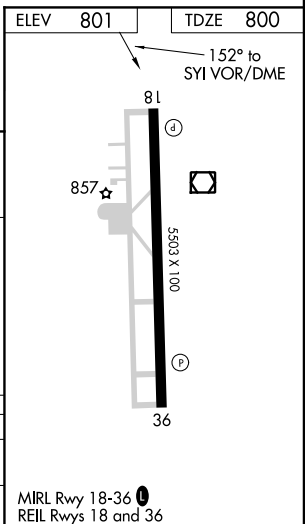
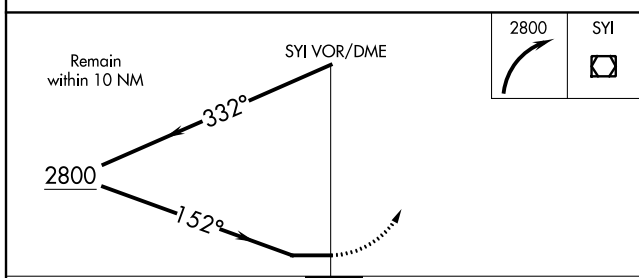
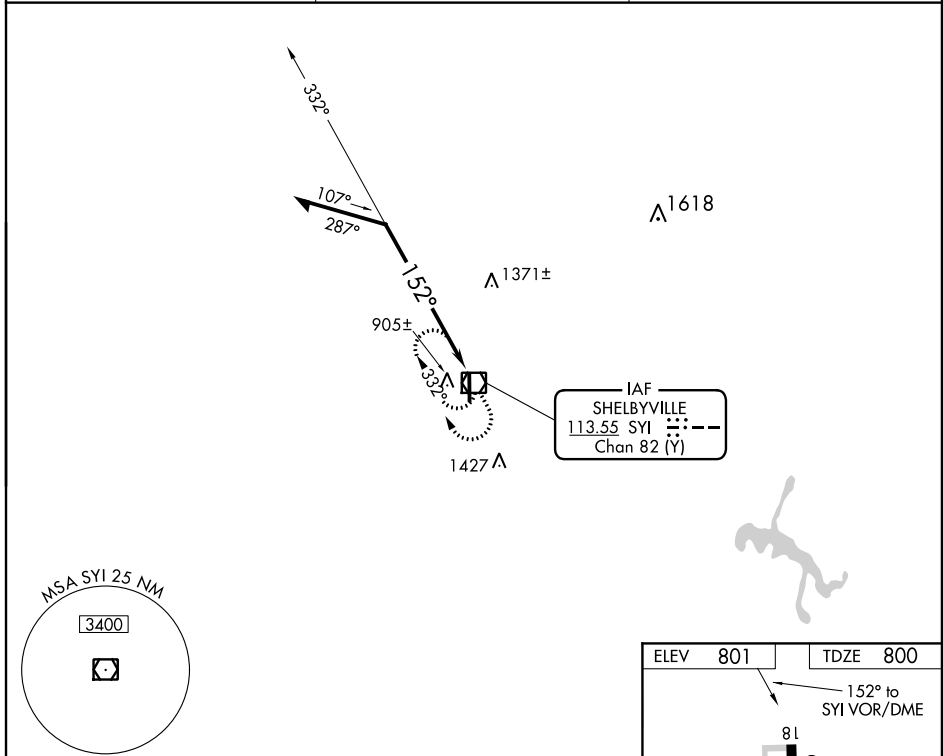
# VOR RWY 18

BOMAR FLD/SHELBYVILLE MUNI (SYI)

**⚠ NA** When local altimeter setting not received, use Tullahoma altimeter setting and increase all MDA 80 feet, and increase S-18 Cat C visibility ¼ SM.

**MISSED APPROACH:** Climbing right turn to 2800 in SYI VOR/DME holding pattern.

AWOS-3 <b>119.275</b>	MEMPHIS CENTER <b>128.15 323.125</b>	UNICOM <b>122.8</b> (CTAF) <b>0</b>
--------------------------	---	--



CATEGORY	A	B	C	D
S-18	1360-1	560 (600-1)	1360-1½ 560 (600-1½)	1360-1¾ 560 (600-1¾)
<b>C</b> CIRCLING	1360-1 559 (600-1)	1420-1 619 (700-1)	1780-3	979 (1000-3)

SHELBYVILLE, TENNESSEE  
Amdt 5B 18JUN20

35°34'N-86°27'W

BOMAR FLD/SHELBYVILLE MUNI (SYI)  
**VOR RWY 18**

SE-1, 16 JUN 2022 to 14 JUL 2022

SE-1, 16 JUN 2022 to 14 JUL 2022