

WAAS CH <b>50118</b> <b>W12A</b>	APP CRS <b>123°</b>	Rwy Idg TDZE Apt Elev	<b>5698</b> <b>2583</b> <b>2583</b>
--	------------------------	-----------------------------	---

# RNAV (GPS) RWY 12

MC COOK BEN NELSON RGNL (MCK)

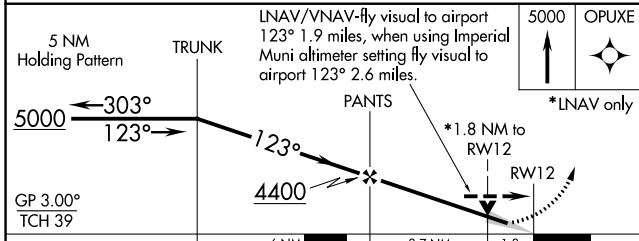
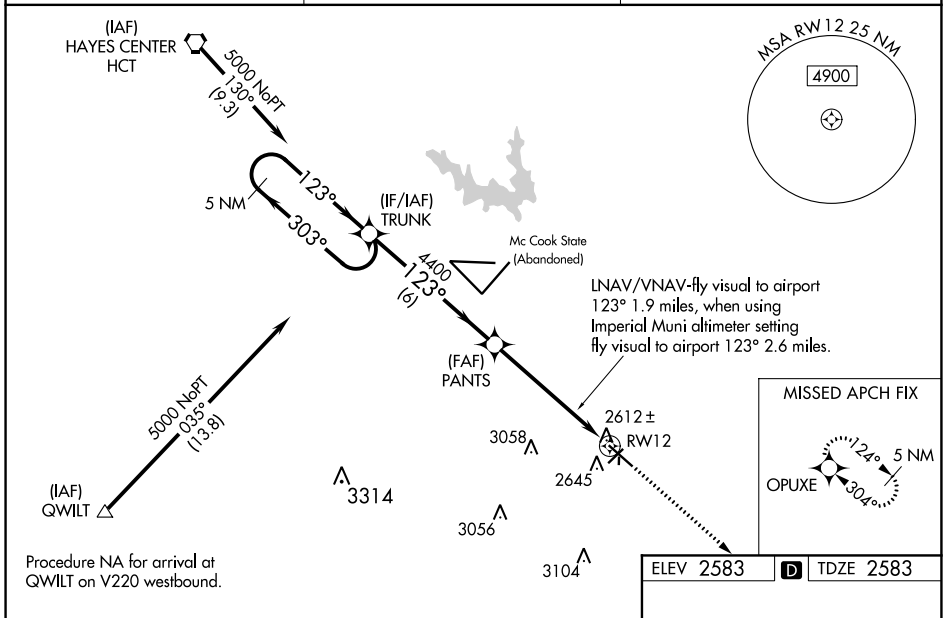
RNP APCH-GPS.

**⚠** Circling NA to Rwy 17 and 35. For uncompensated Baro-VNAV systems, LNAV/VNAV NA below -20°C or above 54°C. Baro-VNAV and VDP NA when using Imperial Muni altimeter setting. For inoperative MALSR, increase LPV all Cats visibility to 1, when using Imperial Muni altimeter setting increase LPV all Cats visibility to 1 3/4 and LNAV visibility Cat A to 1. Inoperative table does not apply to LNAV/VNAV. When local altimeter setting not received, use Imperial Muni altimeter setting and increase all DAs 213 feet, and LPV all Cats visibility 3/4 mile, LNAV/VNAV Cat C visibility 1/2 mile; increase all MDAs 220 feet, and LNAV and Circling visibility Cats A and B 1/4 mile, Cat C 1 mile.

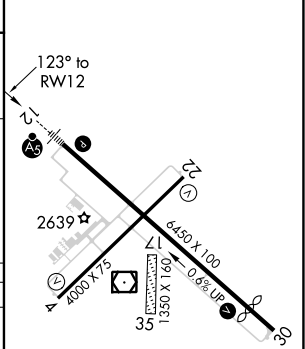
MALSR

**MISSED APPROACH:** Climb to 5000 direct OPUXE and hold.

ASOS <b>119.025</b>	DENVER CENTER <b>132.7 226.675</b>	UNICOM <b>122.8 (CTAF)</b>
------------------------	---------------------------------------	-------------------------------



ELEV 2583	<b>D</b> TDZE 2583
-----------	--------------------



CATEGORY	A	B	C	D
LPV DA	2840-1/2	257 (300-1/2)		NA
LNNAV/VNAV DA	3240-2	657 (700-2)		NA
LNNAV MDA	3180-1/2	597 (600-1/2)	3180-1 597 (600-1)	NA
CIRCLING	3180-1	597 (600-1)	3360-2 1/4 777 (800-2 1/4)	NA

REIL Rwy 30

MRL Rwy 4-22 and 12-30

NC-2, 16 JUN 2022 to 14 JUL 2022

NC-2, 16 JUN 2022 to 14 JUL 2022