

APP CRS	Rwy Idg	<b>4000</b>
<b>218°</b>	TDZE	<b>2565</b>
	Apt Elev	<b>2583</b>

# RNAV (GPS) RWY 22

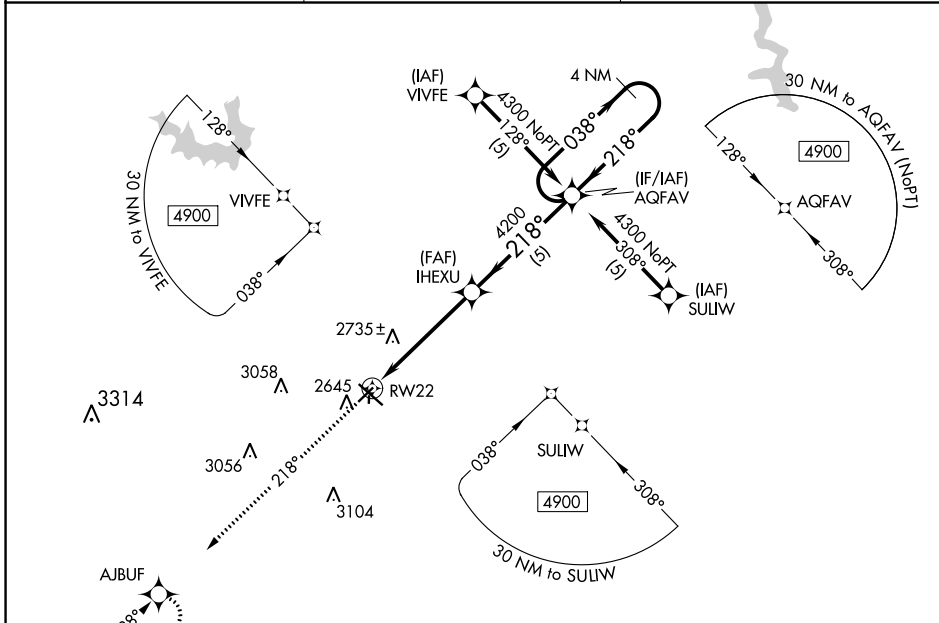
MC COOK BEN NELSON RGNL (MCK)

RNP APCH-GPS.

▼ When local altimeter setting not received, use Imperial Muni altimeter setting and increase all MDA 220 feet, increase S-22 and Circling Cat C visibility ¾ mile. VDP NA when using Imperial Muni altimeter setting. Circling NA to Rwy's 17 and 35.

MISSED APPROACH: Climb to 5000 via 218° course to AJBUF and hold.

ASOS <b>119.025</b>	DENVER CENTER <b>132.7 226.675</b>	UNICOM <b>122.8 (CTAF)</b>
------------------------	---------------------------------------	-------------------------------



NC-2, 16 JUN 2022 to 14 JUL 2022

NC-2, 16 JUN 2022 to 14 JUL 2022

ELEV 2583	TDZE 2565
-----------	-----------

This diagram provides a detailed view of the final approach and holding pattern. Key details include:

- Final Approach**: 218° heading to RW22. 4200 ft MSL at 1.3 NM to RW22. Descent angle 3.04° (TCH 40).
- Holding Pattern**: 4 NM holding pattern at AQFAV. 038° heading to AQFAV, 218° heading from AQFAV.
- Runway**: RW22, 6450 x 100 ft. 2639 ft AGL. 0.6% UP slope.
- Obstacles**: 4000 x 75 ft, 1350 x 50 ft, 35 ft.

CATEGORY	A	B	C	D
LNVA MDA	3000-1	435 (500-1)	3000-1¼ 435 (500-1¼)	NA
CIRCLING	3040-1 457 (500-1)	3120-1 537 (600-1)	3360-2¼ 777 (800-2¼)	NA

REIL Rwy 30  
MIRL Rwy's 4-22 and 12-30