

WAAS CH 56218 W30A	APP CRS 304°	Rwy Idg TDZE Apt Elev	5698 2558 2583
--	------------------------	-----------------------------	---

RNAV (GPS) RWY 30

MC COOK BEN NELSON RGNL (MCK)

RNP APCH-GPS.

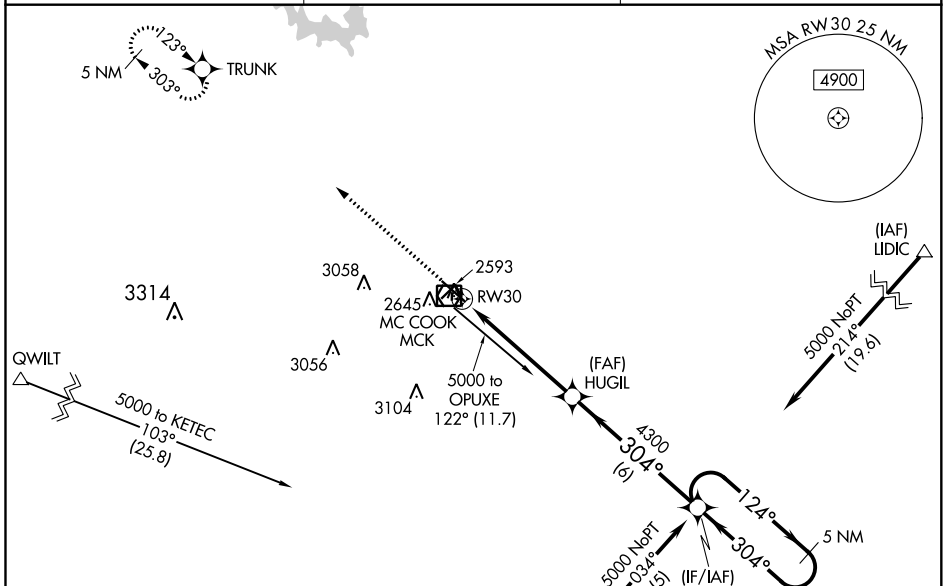
⚠ When local altimeter setting not received, use Imperial Muni altimeter setting: increase LPV DA to 3023 feet, and all visibilities $\frac{1}{2}$ SM; increase LNAV/VNAV DA to 3079 feet and all visibilities $\frac{3}{8}$ SM; increase all MDA's 220 feet and visibility Cat C $\frac{3}{4}$ SM. Baro-VNAV and VDP NA when using Imperial Muni altimeter setting. Circling NA to Rwy 17 and 35. For uncompensated Baro-VNAV systems, LNAV/VNAV NA below -20°C or above 54°C.

MISSED APPROACH: Climb to 5000 direct TRUNK and hold.

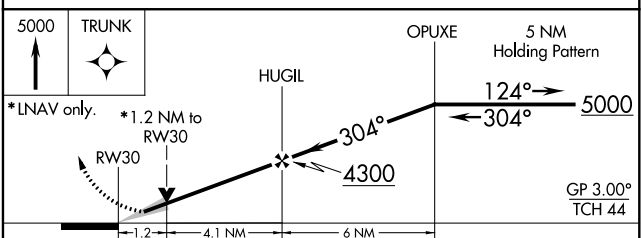
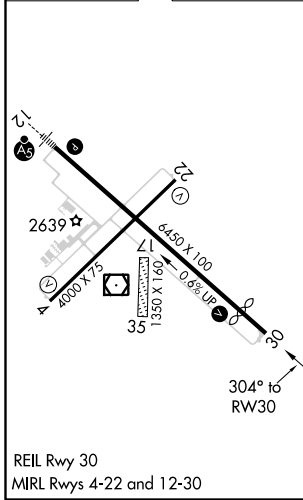
ASOS
119.025

DENVER CENTER
132.7 226.675

UNICOM
122.8 (CTAF) 0



ELEV 2583	D	TDZE 2558
-----------	----------	-----------



CATEGORY	A	B	C	D
LPV DA	2810- $\frac{7}{8}$	252 (300- $\frac{7}{8}$)		NA
LNAV/VNAV DA	2866-1	308 (300-1)		NA
LNAV MDA	2960-1	402 (400-1)	2960-1 $\frac{1}{8}$ 402 (400-1 $\frac{1}{8}$)	NA
CIRCLING	3040-1 457 (500-1)	3120-1 537 (600-1)	3360-2 $\frac{1}{4}$ 777 (800-2 $\frac{1}{4}$)	NA

NC-2, 16 JUN 2022 to 14 JUL 2022

NC-2, 16 JUN 2022 to 14 JUL 2022