

WAAS CH 78026 W23A	APP CRS 230°	Rwy Idg TDZE Apt Elev	5005 3443 3443
--	------------------------	-----------------------------	---

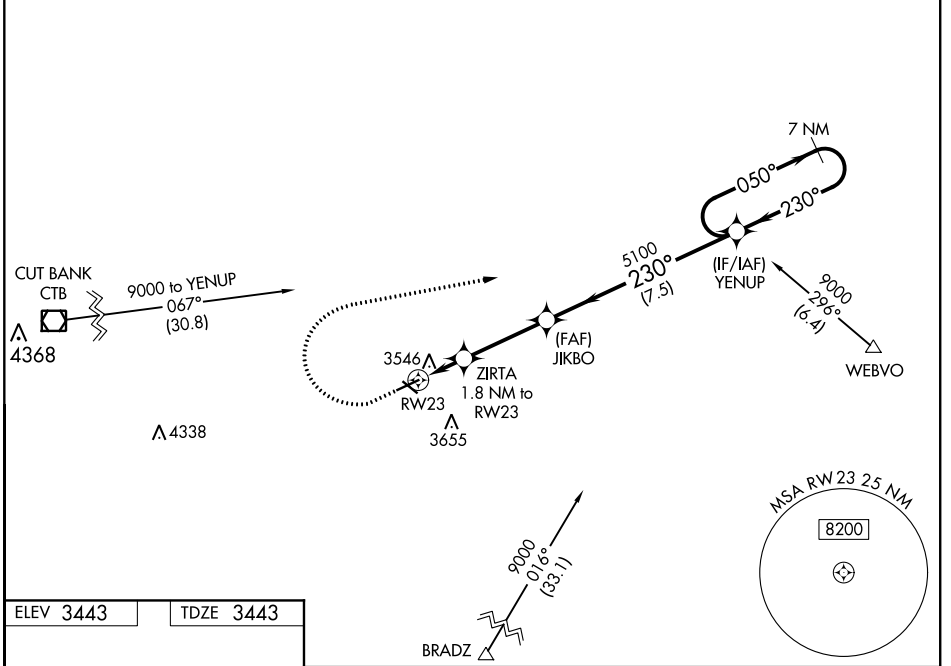
RNAV (GPS) RWY 23

SHELBY (SBX)

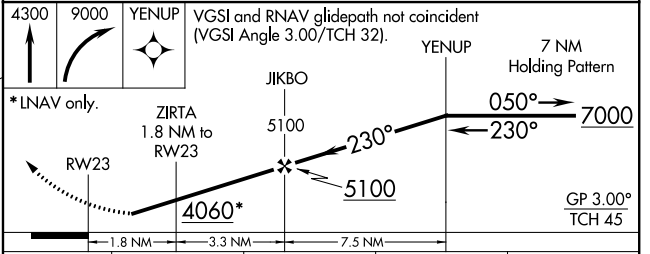
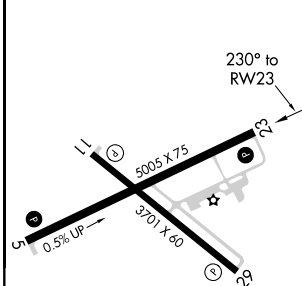
NA Baro-VNAV NA. Rwy 23 helicopter visibility reduction below 1 SM NA. DME/DME RNP-0.3 NA. Use Cut Bank altimeter setting, if not received use Great Falls altimeter setting and increase all DA 81 feet and all MDA 100 feet; increase LPV all Cats visibility 3/8 mile, LNAV/VNAV all Cats, LNAV Cats C/D, Circling Cats C/D visibilities 1/4 mile. Straight-in Rwy 23 NA at night. Circling Rwy 23 NA at night.

MISSED APPROACH: Climb to 4300 then climbing right turn to 9000 direct YENUP and hold, continue climb-in-hold to 9000.

CTB ASOS 119.025	SALT LAKE CITY CENTER 133.4 285.4	UNICOM 122.8 (CTAF) 0
----------------------------	---	---------------------------------



ELEV 3443	TDZE 3443
-----------	-----------



CATEGORY	A	B	C	D
LPV DA		3799-1 1/8	356 (400-1 1/8)	
LNAV/VNAV DA		3813-1 1/4	370 (400-1 1/4)	
LNAV MDA	3920-1	477 (500-1)	3920-1 3/8	477 (500-1 3/8)
C CIRCLING	4020-1 577 (600-1)	4080-1 637 (700-1)	4100-1 3/4 657 (700-1 3/4)	4220-2 1/2 777 (800-2 1/2)

NW-1, 16 JUN 2022 to 14 JUL 2022

NW-1, 16 JUN 2022 to 14 JUL 2022