

WAAS CH <b>69630</b> W05A	APP CRS <b>050°</b>	Rwy Idg TDZE Apt Elev	<b>5005</b> <b>3427</b> <b>3443</b>
---------------------------------	------------------------	-----------------------------	---

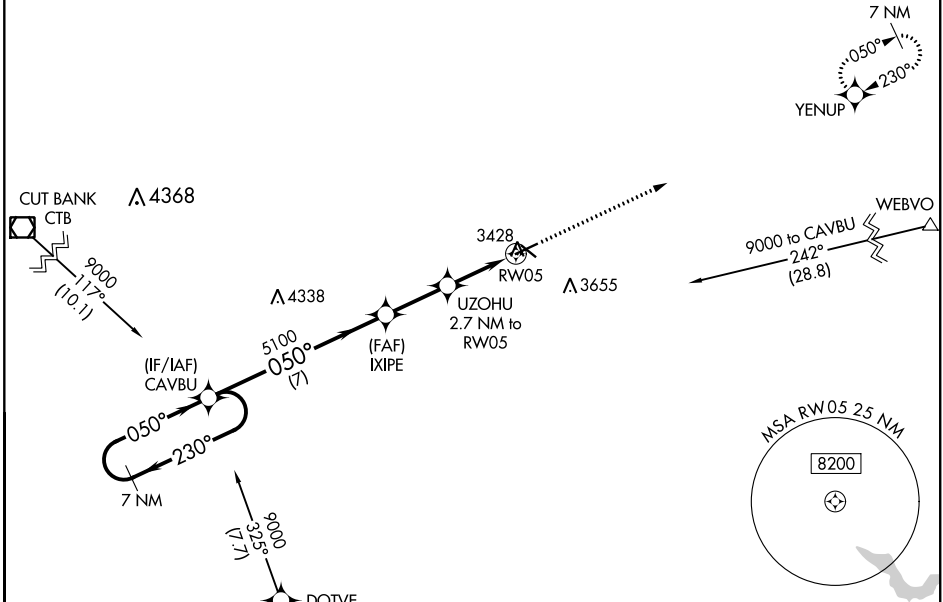
# RNAV (GPS) RWY 5

SHELBY (SBX)

**▼** Night landing: Rwy 23 NA. Baro-VNAV NA. DME/DME RNP-0.3 NA.  
**▲ NA** Use Cut Bank altimeter setting, if not received use Great Falls altimeter setting and increase all DA 81 feet and all MDA 100 feet; increase LPV all Cats visibility ¼ mile, LNAV/VNAV all Cats visibility ⅓ mile, LNAV Cats C/D and Circling Cat C/D visibilities ¼ mile.

MISSED APPROACH: Climb to 9000 direct YENUP and hold, continue climb-in-hold to 9000.

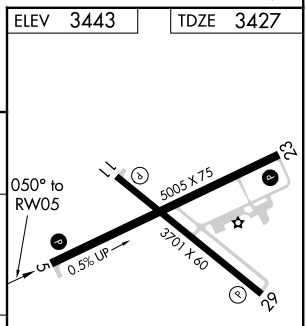
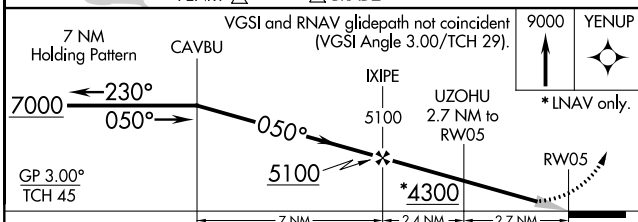
CTB ASOS <b>119.025</b>	SALT LAKE CITY CENTER <b>133.4 285.4</b>	UNICOM <b>122.8 (CTAF) 0</b>
----------------------------	---	---------------------------------



NW-1, 16 JUN 2022 to 14 JUL 2022

NW-1, 16 JUN 2022 to 14 JUL 2022

ELEV 3443	TDZE 3427
-----------	-----------



CATEGORY	A	B	C	D
LPV DA		3733-1	306 (300-1)	
LNAV/VNAV DA		3783-1 1/8	356 (400-1 1/8)	
LNAV MDA	3800-1	373 (400-1)	3800-1 1/8	373 (400-1 1/8)
<b>C</b> CIRCLING	4020-1 577 (600-1)	4080-1 637 (700-1)	4100-1 3/4 657 (700-1 3/4)	4220-2 1/2 777 (800-2 1/2)

MRL Rwy 5-23 and 11-29 0