

APP CRS 337°	Rwy Idg 4742
	TDZE 30
	Apt Elev 32

RNAV (GPS) RWY 34

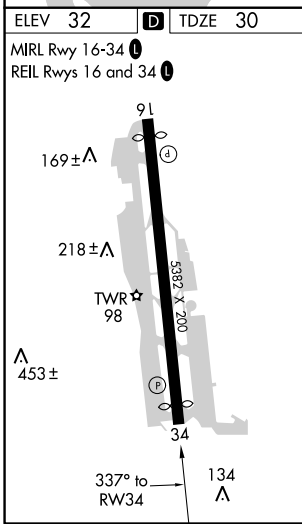
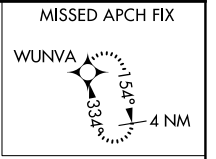
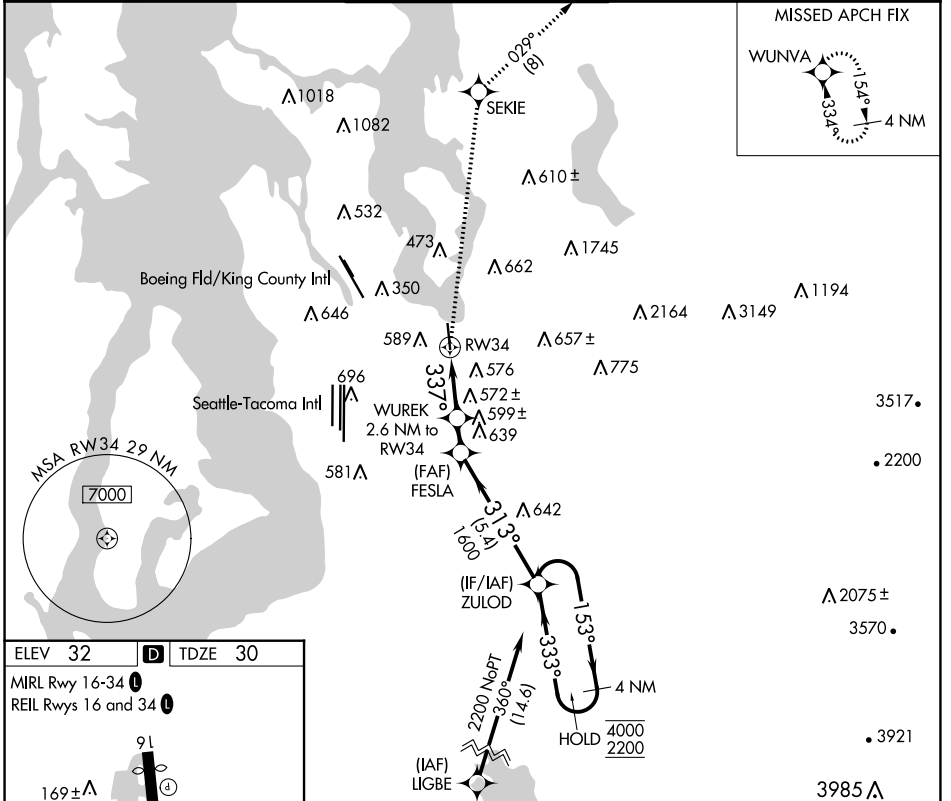
RENTON MUNI (RNT)

RNP APCH-GPS.

⚠ Circling NA west of Rwy 16-34. Rwy 34 helicopter visibility reduction below 1 SM NA. Straight-in Rwy 34 at night, Circling Rwy 34 at night, operational VGSI required, remain on or above VGSI glidepath until threshold.

MISSED APPROACH: Climb to 3000 direct SEKIE and on track 029° to WUNVA and hold.

ATIS 126.95	SEATTLE APP CON 119.2 284.7	RENTON TOWER★ 124.7 (CTAF) 0 256.9	GND CON 121.6 256.9	UNICOM 122.95
-----------------------	---------------------------------------	--	-------------------------------	-------------------------



3000	SEKIE	tr 029°	WUNVA	FESLA	ZULOD	4 NM Holding Pattern
			WUREK 2.6 NM to RWY 34	≤ 3.75° TCH 56	1100	153° → 4000
					1600	← 333° 2200
2.6 NM	1.3 NM	5.4 NM				
CATEGORY	A	B	C	D		
LNAV MDA	840-1 810 (900-1)	840-1¼ 810 (900-1¼)	840-2½ 810 (900-2½)	NA		
C CIRCLING	860-1¼ 828 (900-1¼)	920-1¼ 888 (900-1¼)	1000-3 968 (1000-3)	NA		

NW-1, 16 JUN 2022 to 14 JUL 2022

NW-1, 16 JUN 2022 to 14 JUL 2022