

RNAV (GPS)-A

MORRISVILLE-STOWE STATE (MVL)

APP CRS	Rwy Idg	N/A
051°	TDZE	N/A
	Apt Elev	733

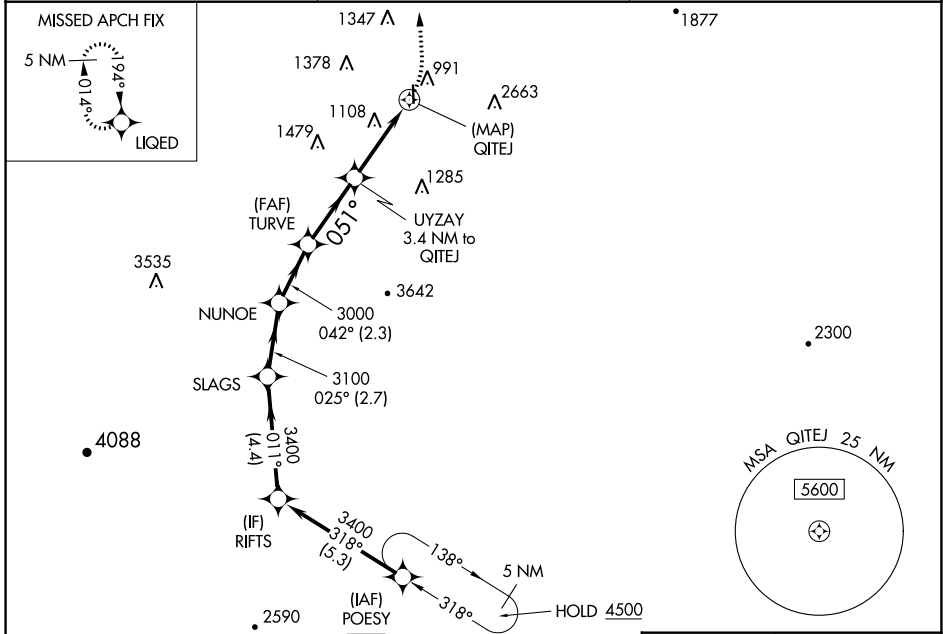
RNP APCH.

⚠ Circling NA for Cat C east of Rwy 1-19. When local altimeter setting not received, use Burlington altimeter setting and increase all MDAs 120 feet.

⚠ -20°C

MISSED APPROACH: Climbing left turn to 5600 direct LIQED and hold, continue climb-in-hold to 5600.

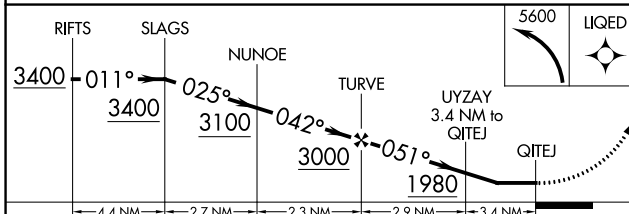
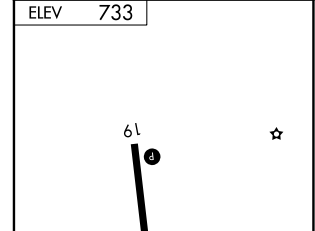
ASOS 135.625	BOSTON CENTER 135.7 282.2	UNICOM 122.8 (CTAF)
------------------------	-------------------------------------	-------------------------------



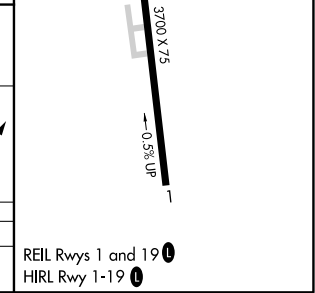
Procedure NA for arrival on MPV VOR/DME airway radials 317 CW 037.

MONTPELIER MPV

ELEV 733



CATEGORY	A	B	C	D
C CIRCLING	1620-1¼ 887 (900-1¼)	1780-1½ 1047 (1100-1½)	1980-3 1247 (1300-3)	NA



REIL Rwy 1 and 19

HIRL Rwy 1-19

RNAV (GPS)-A

NE-1, 16 JUN 2022 to 14 JUL 2022

NE-1, 16 JUN 2022 to 14 JUL 2022