

WAAS CH <b>97531</b> <b>W19B</b>	APP CRS <b>194°</b>	Rwy Idg TDZE Apt Elev	<b>3700</b> <b>733</b> <b>733</b>
--	------------------------	-----------------------------	---

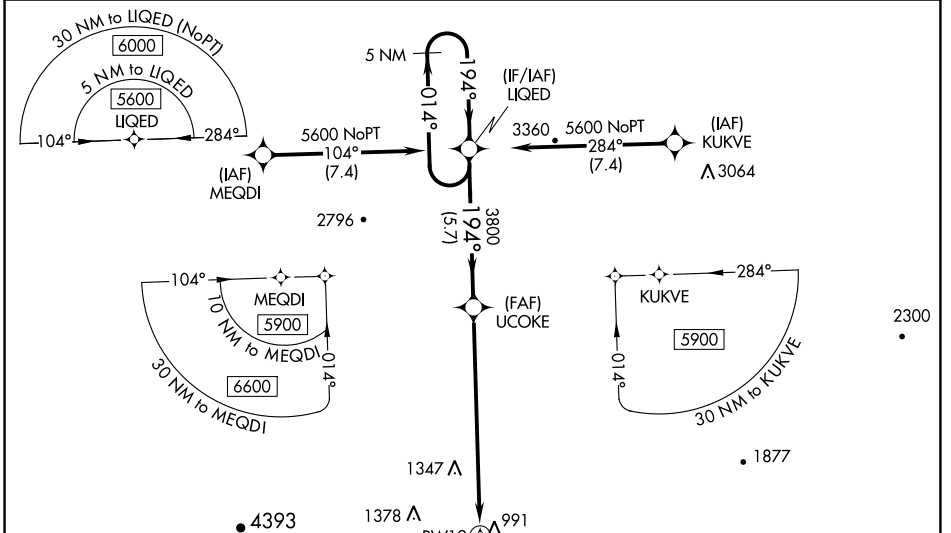
# RNAV (GPS) Z RWY 19

MORRISVILLE-STOWE STATE (MVL)

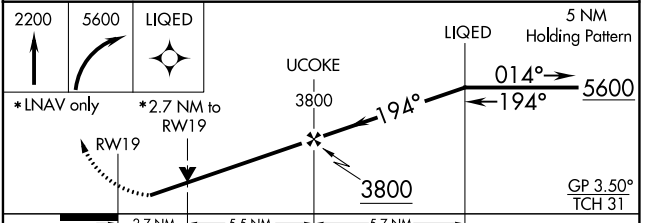
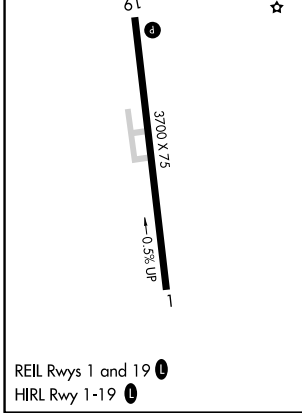
**⚠** For uncompensated Baro-VNAV systems, LNAV/VNAV NA below -28°C (-18°F) or above 54°C (130°F). Circling NA for Cat C E of Rwy 1-19. Baro-VNAV and VDP NA when using Burlington altimeter setting. Rwy 19 helicopter visibility reduction below 3/4 SM NA. DME/DME RNP-0.3 NA. When local altimeter setting not received, use Burlington altimeter setting: increase LPV DA to 1380 feet and all visibilities 3/4 SM; increase LNAV/VNAV DA to 1690 feet; increase all MDAs 120 feet.

**MISSED APPROACH:** (Do not exceed 165K until LIQED) Climb to 2200 then climbing right turn to 5600 direct LIQED and hold, continue climb-in-hold to 5600. Missed approach requires minimum climb of 325 feet per NM to 3000; if unable to meet climb gradient, see RNAV (GPS) Y Rwy 19.

ASOS <b>135.625</b>	BOSTON CENTER <b>135.7 282.2</b>	UNICOM <b>122.8 (CTAF) 0</b>
------------------------	-------------------------------------	---------------------------------



ELEV 733	TDZE 733
----------	----------



CATEGORY	A	B	C	D
LPV DA	1270-1½	537 (600-1½)		NA
LNAV/VNAV DA	1580-3	847 (900-3)		NA
LNAV MDA	1760-1¼ 1027 (1100-1¼)	1760-1½ 1027 (1100-1½)	1760-3 1027 (1100-3)	NA
<b>C</b> CIRCLING	1760-1¼ 1027 (1100-1¼)	1780-1½ 1047 (1100-1½)	1980-3 1247 (1300-3)	NA

NE-1, 16 JUN 2022 to 14 JUL 2022

NE-1, 16 JUN 2022 to 14 JUL 2022