

LOC/DME I-SIT <b>108.9</b> Chan <b>26</b>	APP CRS <b>115°</b>	Rwy Idg <b>6500</b> TDZE <b>24</b> Apt Elev <b>26</b>
---	------------------------	---

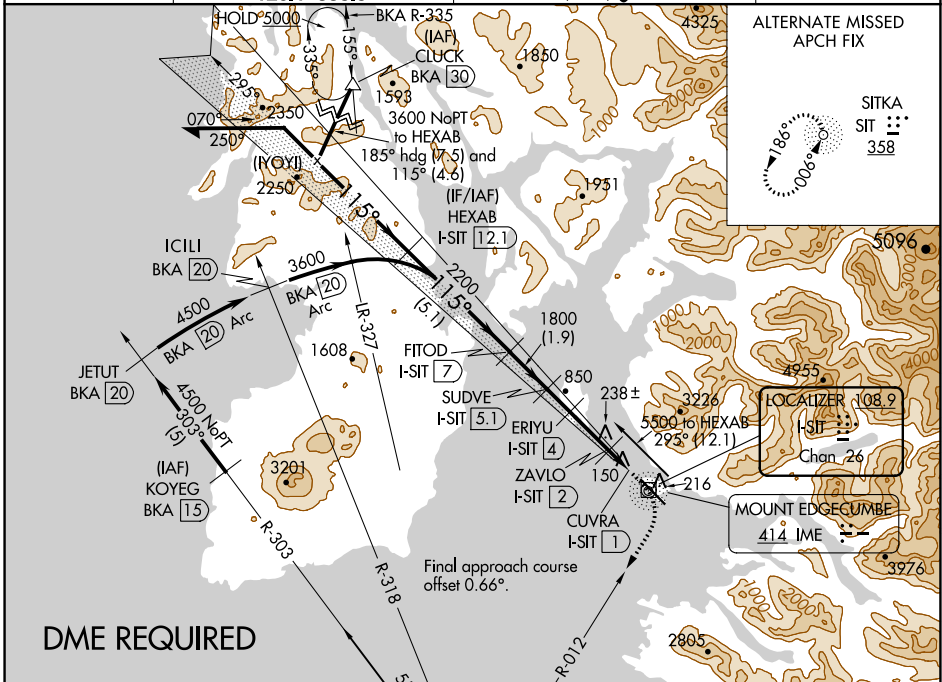
# LDA/DME RWY 11

## SITKA ROCKY GUTIERREZ (SIT)(PASI)

**⚠** When local altimeter setting not received, procedure NA.  
**⚠** Circling NA northeast of Rwy 11-29.

**MISSED APPROACH:** Climb to 500 then climbing right turn to 5500 on heading 192° and BKA R-012 to BKA VORTAC and hold, continue climb-in-hold to 5500.

AFIS <b>135.9</b>	ANCHORAGE CENTER <b>126.1 335.5</b>	SITKA RADIO <b>123.6 (CTAF) 0 122.2</b>	UNICOM <b>122.95</b>
----------------------	--	--	-------------------------

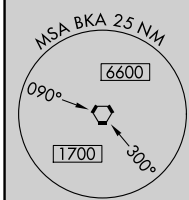


**ALTERNATE MISSED APCH FIX**

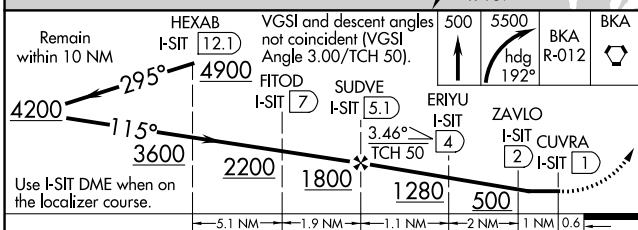
SITKA  
SIT 358

**LOCALIZER 108.9**  
SIT 358  
Chan 26

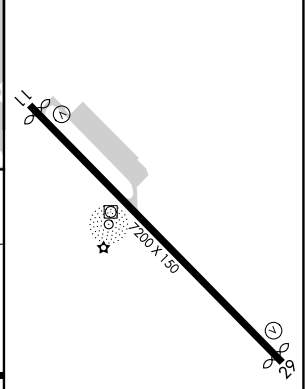
**MOUNT EDGE CUMBE 41.4 IME**



**BIORKA ISLAND**  
113.8 BKA  
Chan 85



ELEV 26	<b>D</b>	TDZE 24
---------	----------	---------



CATEGORY	A	B	C	D
S-11		400-1	376 (400-1)	
<b>C</b> CIRCLING	520-1	494 (500-1)	760-2 734 (800-2)	1760-3 1734 (1800-3)

REIL Rwy 11 and 29 **Ⓛ**  
 HIRL Rwy 11-29 **Ⓛ**

AK, 19 MAY 2022 to 14 JUL 2022

AK, 19 MAY 2022 to 14 JUL 2022