

(STKA9.SSR) 17285

SITKA NINE DEPARTURE

AL-5414 (FAA)

SITKA ROCKY GUTIERREZ (SIT) (PASI)
SITKA, ALASKA

AFIS
135.9
ANCHORAGE CENTER
126.1 335.5
SITKA RADIO
123.6 (CTAF) 122.2
UNICOM
122.95

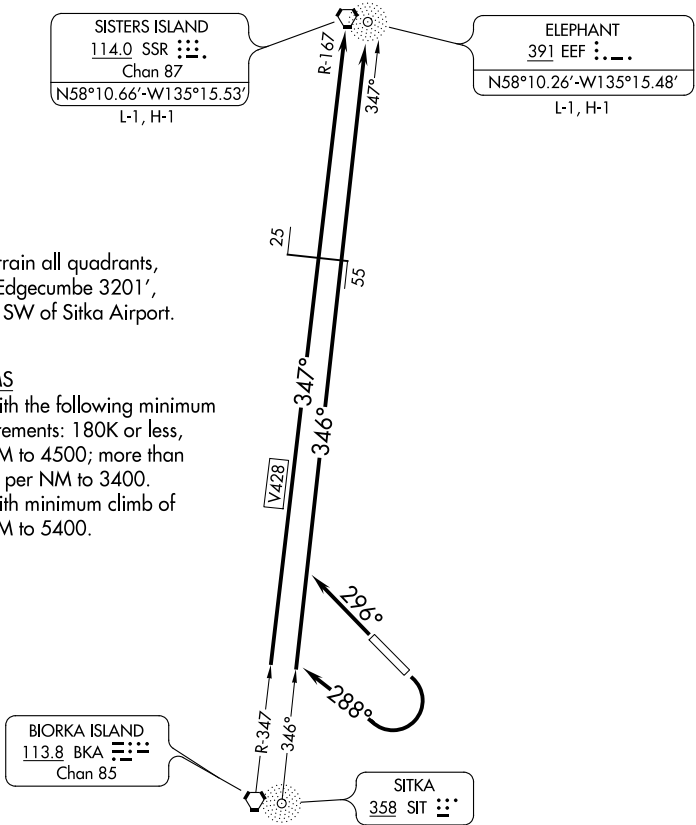
SISTERS ISLAND
114.0 SSR $\vdots\vdots$
Chan 87
N58°10.66'-W135°15.53'
L-1, H-1

ELEPHANT
391 EEF $\vdots\vdots$
N58°10.26'-W135°15.48'
L-1, H-1

WARNING: High terrain all quadrants,
Mount Edgecumbe 3201',
13 NM SW of Sitka Airport.

TAKEOFF MINIMUMS

- Rwy 11: Standard with the following minimum climb requirements: 180K or less, 390' per NM to 4500; more than 180K, 645' per NM to 3400.
- Rwy 29: Standard with minimum climb of 357' per NM to 5400.



NOTE: Chart not to scale.

DEPARTURE ROUTE DESCRIPTION

TAKEOFF RUNWAY 11: Climbing right turn heading 288° to join V428 and SSR R-167 to SSR VORTAC or on SIT 346° bearing and EEF 347° course to EEF NDB.

TAKEOFF RUNWAY 29: Climb heading 296° to join V428 to SSR VORTAC or SIT NDB 346° bearing and EEF 347° course to EEF NDB.

SITKA NINE DEPARTURE
(STKA9.SSR) 13NOV14

SITKA, ALASKA
SITKA ROCKY GUTIERREZ (SIT) (PASI)

AK, 19 MAY 2022 to 14 JUL 2022

AK, 19 MAY 2022 to 14 JUL 2022