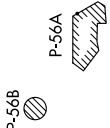


CLTCH THREE DEPARTURE (RNAV)

NE-3, 16 JUN 2022 to 14 JUL 2022

TOP ALTITUDE:
3000



DEPARTURE ROUTE DESCRIPTION

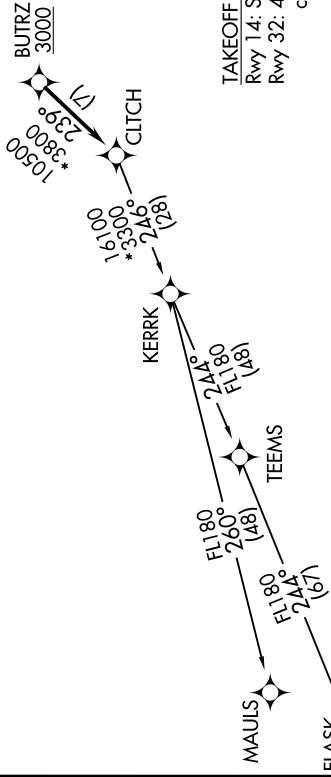
Climb on heading assigned by ATC, expect RADAR vectors to BUTRZ, then on track 239° to CLTCH, thence....

....on assigned transition, maintain altitude assigned by ATC, expect clearance to filed altitude within ten (10) minutes after departure.

FLASK TRANSITION (CLTCH3.FLASK)
MAULS TRANSITION (CLTCH3.MAULS)

ATIS 128.175
CLNC DEL 351.8
GND CON 121.9 351.8
DAVISON TOWER* 126.3 (CTAF) 229.4
POTOMAC DEP CON 118.95 257.2

NOTE: RNAV 1.
NOTE: RADAR required.
NOTE: DME/DME/IRU or GPS required.
NOTE: Turbo-jets only.



TAKEOFF MINIMUMS:
Rwy 14: Standard.
Rwy 32: 400-2 or Standard with minimum climb of 300' per NM to 500.

NOTE: Chart not to scale.

NE-3, 16 JUN 2022 to 14 JUL 2022