

FORT BELVOIR, VIRGINIA

ILS or LOC RWY 32

LOC/DME I-DAA 108.9 Chan 26	APCH CRS 322°	Rwy Idg TDZE Arprt Elev 4529 68 74
---	-------------------------	--

AL-5504 [USA]

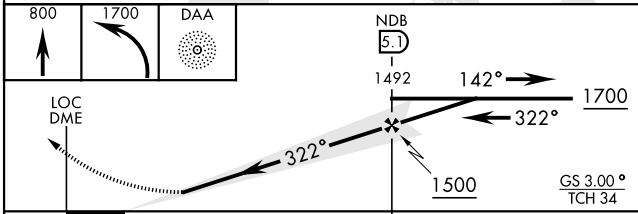
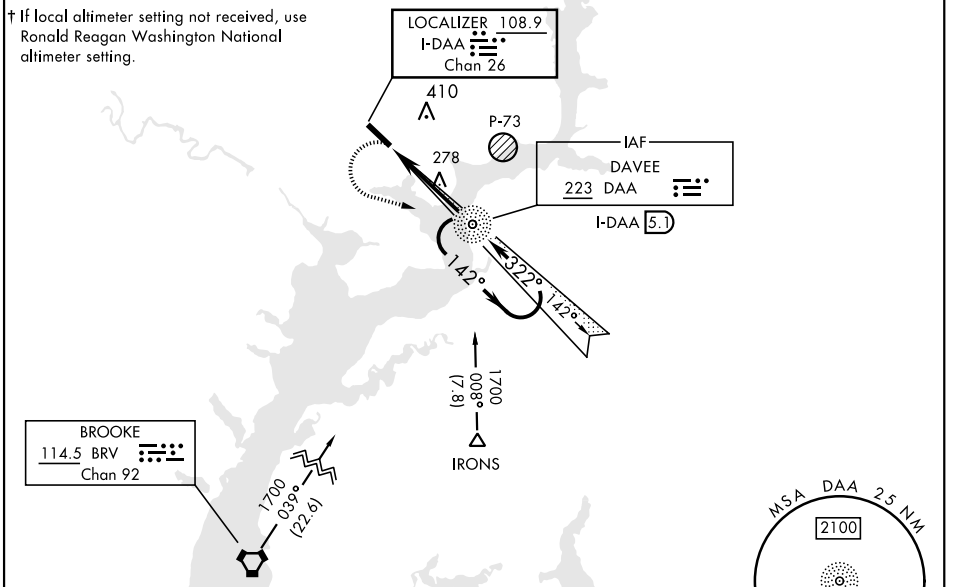
DAVISON AAF (KDAV)

ADF required.	MALSF (A4)	MISSED APPROACH: Climb to 800, then climbing left turn to 1700 direct DAA NDB and hold; or when directed by ATC, climb to 800, then climbing left turn to 2000 hdg 190° within 10 NM, expect RADAR vectors.
---------------	---------------	---

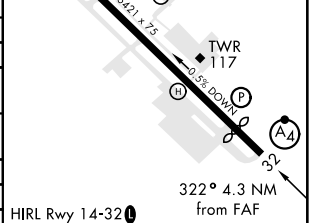
ATIS 128.175	POTOMAC APP CON 118.95 319.1	TOWER ★ 126.3 (CTAF) 0229.4	GND CON 121.9 351.8	CLNC DEL 351.8	PAR
------------------------	--	---------------------------------------	-------------------------------	--------------------------	-----

Visibility reduction by helicopters NA.
Inoperative table does not apply to S-32 CAT A and B.

† If local altimeter setting not received, use Ronald Reagan Washington National altimeter setting.



ELEV 74	TDZE 68
Rwy 14 Idg 4930'	
Rwy 32 Idg 4529'	



CATEGORY	A	B	C	D
S-ILS 32	348/50		280	(300-1)
S-LOC 32*	540/50	472	(500-1)	540/60 472 (500-1 1/4)
CIRCLING	740-1	666 (700-1)	740-1 3/4 666 (700-1 3/4)	760-2 1/4 686 (700-2 1/4)
† RONALD REAGAN WASHINGTON NATIONAL ALTIMETER SETTING MINIMUMS				
S-ILS 32	381/50		313	(400-1)
S-LOC 32**	580/50	512 (600-1)	580/60 512 (600-1 1/4)	580-1 1/2 512 (600-1 1/2)
CIRCLING	780-1	706 (800-1)	780-2 706 (800-2)	800-2 1/4 726 (800-2 1/4)

FAF to MAP 4.3 NM					
Knots	60	90	120	150	180
Min:Sec	4:18	2:52	2:09	1:43	1:26

FORT BELVOIR, VIRGINIA
Amdt 12C 16JUL20

38°43'N-77°11'W

DAVISON AAF (KDAV)

ILS or LOC RWY 32

NE-3, 16 JUN 2022 to 14 JUL 2022

NE-3, 16 JUN 2022 to 14 JUL 2022