

FORT BELVOIR, VIRGINIA

RNAV (GPS) RWY 32

WAAS CH 91281 W32A	APCH CRS 323°	Rwy ldg TDZE 68 Arprt Elev 74
--------------------------	------------------	--

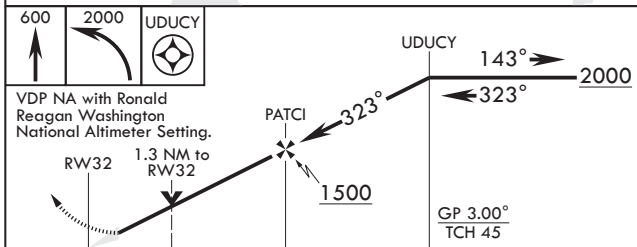
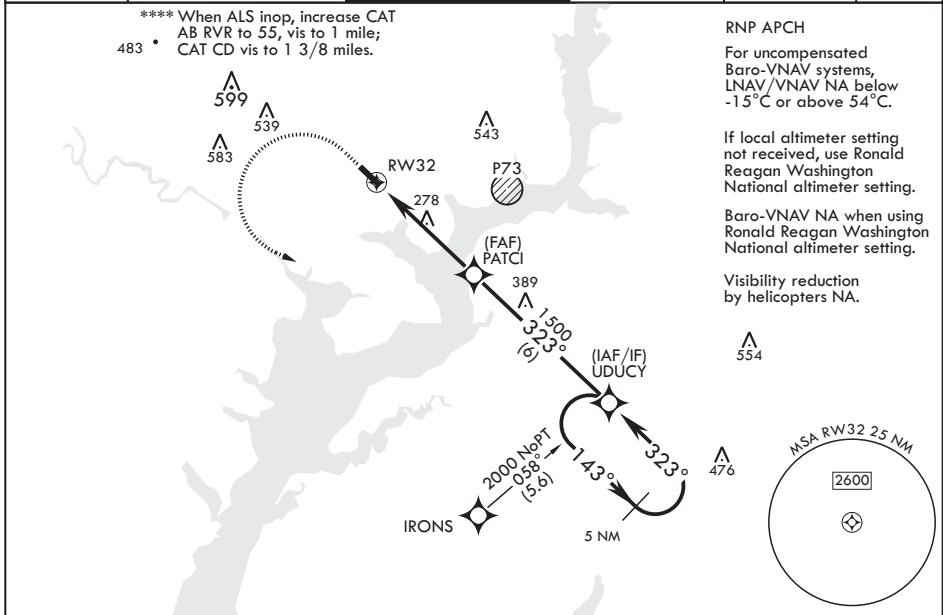
AL-5504 (USA)

DAVISON AAF (KDAV)

⚠ * When ALS inop, increase RVR to 45, vis to 7/8 mile.
 ** When ALS inop, increase RVR to 60, vis to 1 1/8 miles.
 *** When ALS inop, increase vis to 1 3/8 miles.

MALS MISSED APPROACH: Climb to 600 then climbing left turn to 2000 direct UDU CY and hold.

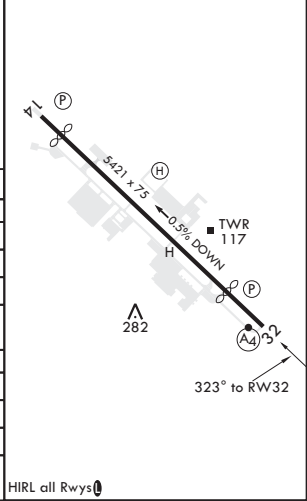
ATIS 128.175	POTOMAC APP CON 118.95 319.1	TOWER * 126.3 (CTAF) 0 229.4	GND CON 121.9 351.8	CLNC DEL 351.8	PAR
-----------------	---------------------------------	---------------------------------	------------------------	-------------------	-----



ELEV 74	TDZE 68
---------	---------

Rwy 14 ldg 4930'
 Rwy 32 ldg 4529'

CATEGORY	A	B	C	D
LPV DA*	351/40	283	(300-¾)	
LNAV/VNAV DA**	481/50	413	(500-1)	
LNAV MDA****	540/40 472 (500-¾)	540/60 472 (500-1½)		
C CIRCLING	700-1 626 (700-1)	740-1 666 (700-1)	800-2 726 (800-2)	1000-3 926 (1000-3)
RONALD REAGAN WASHINGTON NATIONAL ALTIMETER MINIMUMS				
LPV DA*	384/40	316	(400-¾)	
LNAV/VNAV DA***	514/55	446	(500-1)	
LNAV MDA****	580/40 512 (600-¾)	580-1¼ 512 (600-1¼)		
C CIRCLING	720-1 646 (700-1)	780-1 706 (800-1)	820-2¼ 746 (800-2¼)	1040-3 966 (1000-3)



FORT BELVOIR, VIRGINIA
 Amdt 2 10SEP20

38°43'N - 77°11'W

DAVISON AAF (KDAV)

RNAV (GPS) RWY 32

NE-3, 16 JUN 2022 to 14 JUL 2022

NE-3, 16 JUN 2022 to 14 JUL 2022