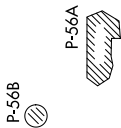


# SCRAM SIX DEPARTURE (RNAV)

NE-3, 16 JUN 2022 to 14 JUL 2022

**TOP ALTITUDE:**  
3000



## DEPARTURE ROUTE DESCRIPTION

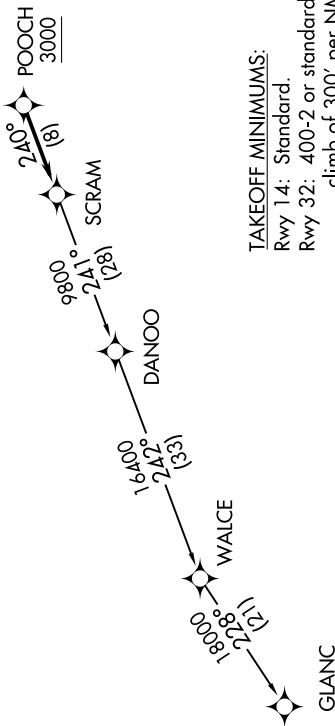
Climb on heading assigned by ATC, expect RADAR vectors to POOCH, then on track 240° to SCRAM, thence....

...as depicted. Maintain 3000, expect clearance to filed altitude within ten (10) minutes after departure.

## GLANC TRANSITION (SCRAM6.GLANC):

ATIS 128.175  
 CINCDL 351.8  
 GND CON 121.9 351.8  
 DAVISON TOWER ★ 126.3 (CTAF) 229.4  
 POTOMAC DEP CON 118.95 257.2

NOTE: RNAV 1.  
 NOTE: RADAR required.  
 NOTE: DME/DME/IRU or GPS required.  
 NOTE: Turbo-jets only.



**TAKEOFF MINIMUMS:**  
 Rwy 14: Standard.  
 Rwy 32: 400-2 or standard with minimum climb of 300' per NM to 500.



NOTE: Chart not to scale.

NE-3, 16 JUN 2022 to 14 JUL 2022