

| | | |
|---|------------------------|---|
| LOC/DME I-GVL 110.55 Chan 42 (Y) | APP CRS 044° | Rwy Idg 5370 TDZE 1275 Apt Elev 1277 |
|---|------------------------|---|

ILS or LOC RWY 5

LEE GILMER MEML (GVL)

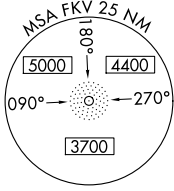
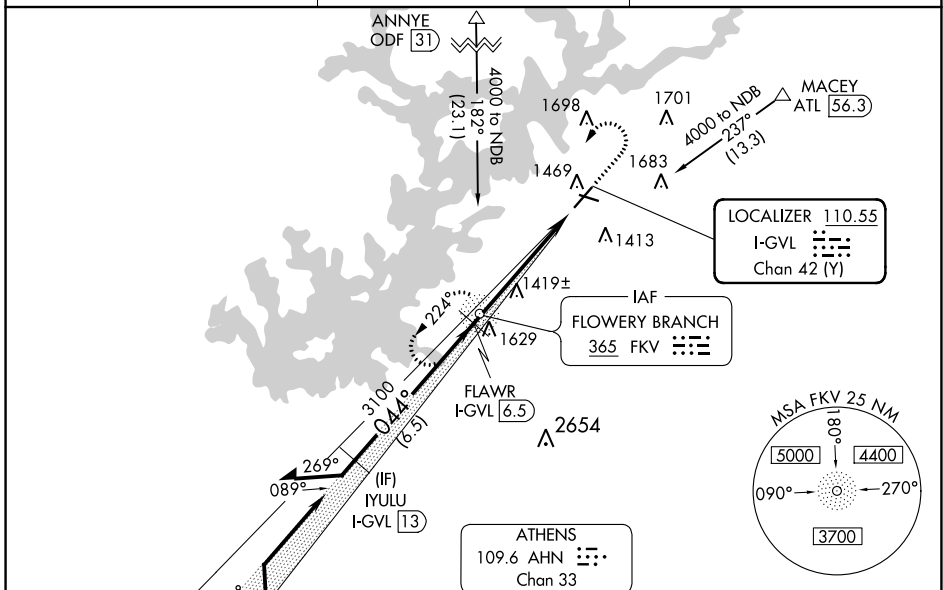
ADF or DME required for procedure entry.
ADF required.



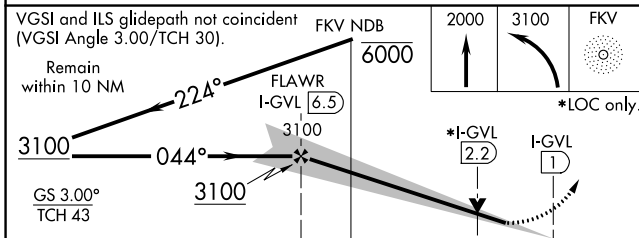
MISSED APPROACH:
Climb to 2000 then
climbing left turn to 3100
direct FKV NDB and hold.

⚠ Circling Rwy 11, 29 NA at night. Rwy 5 helicopter visibility reduction below 3/4 SM NA.
 ⚠ VDP NA when using Jefferson altimeter setting. When local altimeter setting not received,
 use Jefferson altimeter setting: increase all DA to 1556 feet and all visibilities 1/4 SM;
 increase all MDA 80 feet and S-LOC 5 Cat D visibility and Circling Cats C/D visibility 1/4 SM.

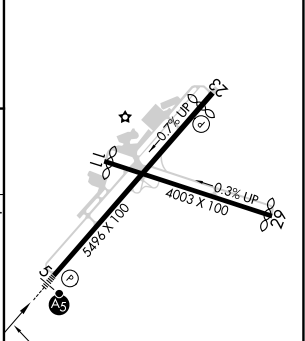
| | | |
|------------------------|--|-----------------------------------|
| ASOS 126.475 | ATLANTA APP CON* 132.475 291.1 | UNICOM 123.075 (CTAF) 0 |
|------------------------|--|-----------------------------------|



Procedure NA for arrivals at LOGEN on V222-325 southwest bound.



| | | |
|-----------|---|-----------|
| ELEV 1277 | D | TDZE 1275 |
|-----------|---|-----------|



| | | | | | | | | | | |
|----------|-----------------------|-----------------------|-----------------------|-------------------------------|-------------------|------|------|------|------|------|
| CATEGORY | A | B | C | D | FAF to MAP 5.5 NM | | | | | |
| S-ILS 5 | | 1475-3/4 | 200 (200-3/4) | | Knots | 60 | 90 | 120 | 150 | 180 |
| S-LOC 5 | 1680-1 | 405 (500-1) | 1680-1/4 | 405 (500-1/4) | Min:Sec | 5:30 | 3:40 | 2:45 | 2:12 | 1:50 |
| CIRCLING | 1880-1 603 (700-1) | 2000-1 723 (800-1) | 2000-2 723 (800-2) | 2060-2 1/2 783 (800-2 1/2) | | | | | | |

SE-4, 16 JUN 2022 to 14 JUL 2022

SE-4, 16 JUN 2022 to 14 JUL 2022