

| | | | |
|--|------------------------|-----------------------------|---|
| WAAS CH 77605 W23A | APP CRS 224° | Rwy Idg TDZE Apt Elev | 5100 1274 1277 |
|--|------------------------|-----------------------------|---|

RNAV (GPS) RWY 23

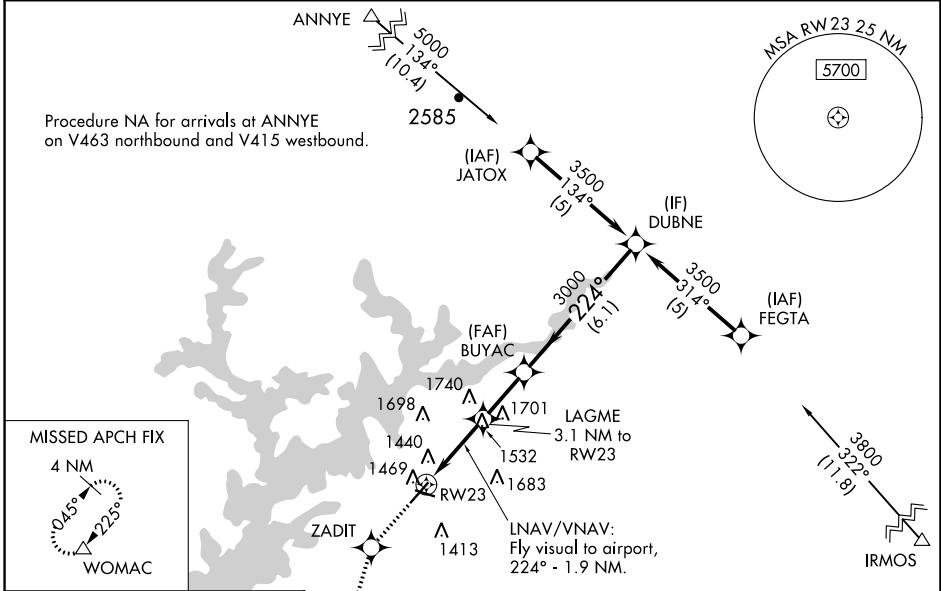
LEE GILMER MEML (GVL)

RNP APCH.

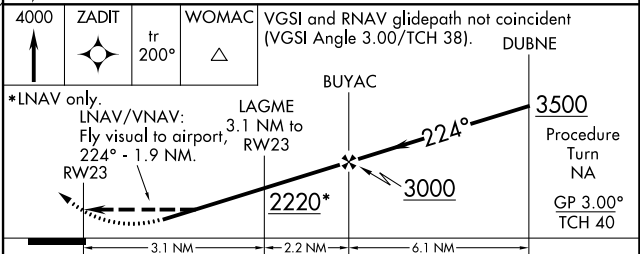
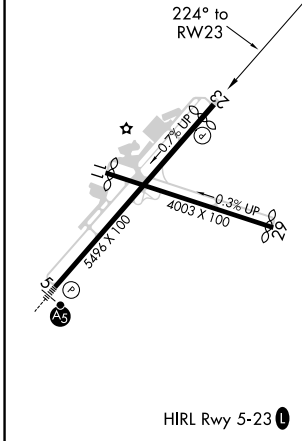
⚠ LNAV/VNAV NA when using Jefferson altimeter setting. Rwy 23 helicopter visibility reduction below $\frac{3}{4}$ SM NA. For uncompensated Baro-VNAV systems, LNAV/VNAV NA below -17°C or above 46°C. When local altimeter setting not received, use Jefferson altimeter setting; increase all DA/MDA 80 feet; increase LPV all Cats visibility $\frac{1}{4}$ SM, and increase LNAV Cats C/D visibility and Circling Cats C/D visibility $\frac{1}{4}$ SM. Circling Rwy 11, 29 NA at night.

MISSED APPROACH: Climb to 4000 direct ZADIT and on 200° track to WOMAC and hold, continue climb-in-hold to 4000.

| | | |
|------------------------|--|---------------------------------|
| ASOS 126.475 | ATLANTA APP CON* 132.475 291.1 | UNICOM 123.075 (CTAF) |
|------------------------|--|---------------------------------|



| | | |
|-----------|----------|-----------|
| ELEV 1277 | D | TDZE 1274 |
|-----------|----------|-----------|



| | | | | |
|--------------|---|-----------------------|--|--|
| CATEGORY | A | B | C | D |
| LPV DA | 1722-1 $\frac{3}{4}$ 448 (500-1 $\frac{3}{4}$) | | | |
| LNAV/VNAV DA | 1884-2 610 (700-2) | | | |
| LNAV MDA | 1840-1 | 566 (600-1) | 1840-1 $\frac{1}{2}$ 566 (600-1 $\frac{1}{2}$) | 1840-1 $\frac{3}{4}$ 566 (600-1 $\frac{3}{4}$) |
| CIRCLING | 1880-1 603 (700-1) | 2000-1 723 (800-1) | 2000-2 723 (800-2) | 2060-2 $\frac{1}{2}$ 783 (800-2 $\frac{1}{2}$) |

SE-4, 16 JUN 2022 to 14 JUL 2022

SE-4, 16 JUN 2022 to 14 JUL 2022