

WAAS CH 42605 W05A	APP CRS 044°	Rwy Idg TDZE Apt Elev	5370 1275 1277
---------------------------------	------------------------	-----------------------------	---

RNAV (GPS) RWY 5

LEE GILMER MEML (GVL)

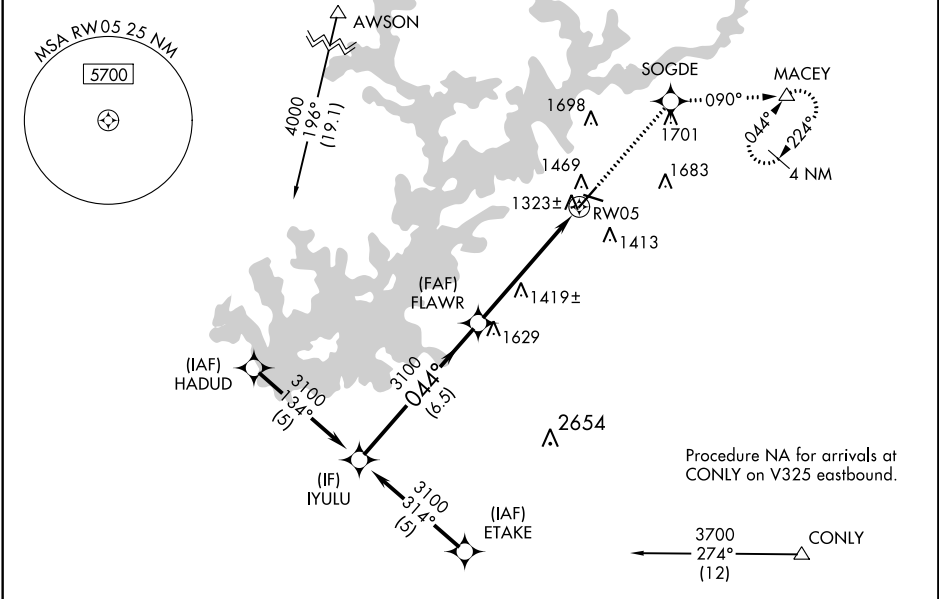
RNP APCH.

For uncompensated Baro-VNAV systems, LNAV/VNAV NA below -17°C or above 46°C. When local altimeter setting not received, use Jefferson altimeter setting: increase all DA/MDA 80 feet; increase LPV and LNAV/VNAV all Cats visibilities ¼ SM, LNAV Cat D and Circling Cat C/D visibility ¼ SM. Baro-VNAV and VDP NA when using Jefferson altimeter setting. Circling Rwy 11, 29 NA at night.

MALSR

MISSED APPROACH:
Climb to 4000 direct SOGDE and on 090° track to MACEY and hold, continue climb-in-hold to 4000.

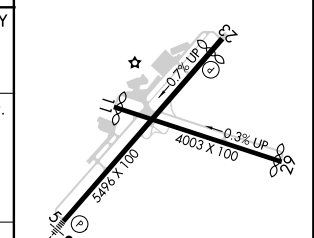
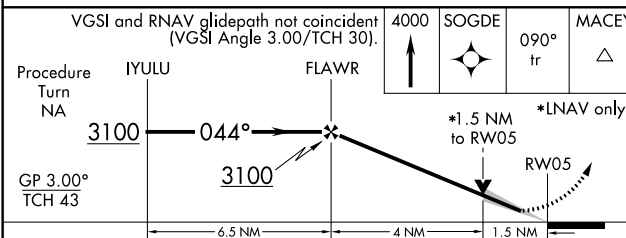
ASOS 126.475	ATLANTA APP CON* 132.475 291.1	UNICOM 123.075 (CTAF)
------------------------	--	---------------------------------



Procedure NA for arrivals at CONLY on V325 eastbound.

← 3700 274° (12) CONLY

ELEV 1277	D TDZE 1275
-----------	--------------------



CATEGORY	A	B	C	D
LPV DA	1525-1		250 (300-1)	
LNAV/VNAV DA	1760-1¾		485 (500-1¾)	
LNAV MDA	1780-1	505 (600-1)	1780-1½	505 (600-1½)
CIRCLING	1880-1 603 (700-1)	2000-1 723 (800-1)	2000-2 723 (800-2)	2060-2½ 783 (800-2½)

HIRL Rwy 5-23

SE-4, 16 JUN 2022 to 14 JUL 2022

SE-4, 16 JUN 2022 to 14 JUL 2022