

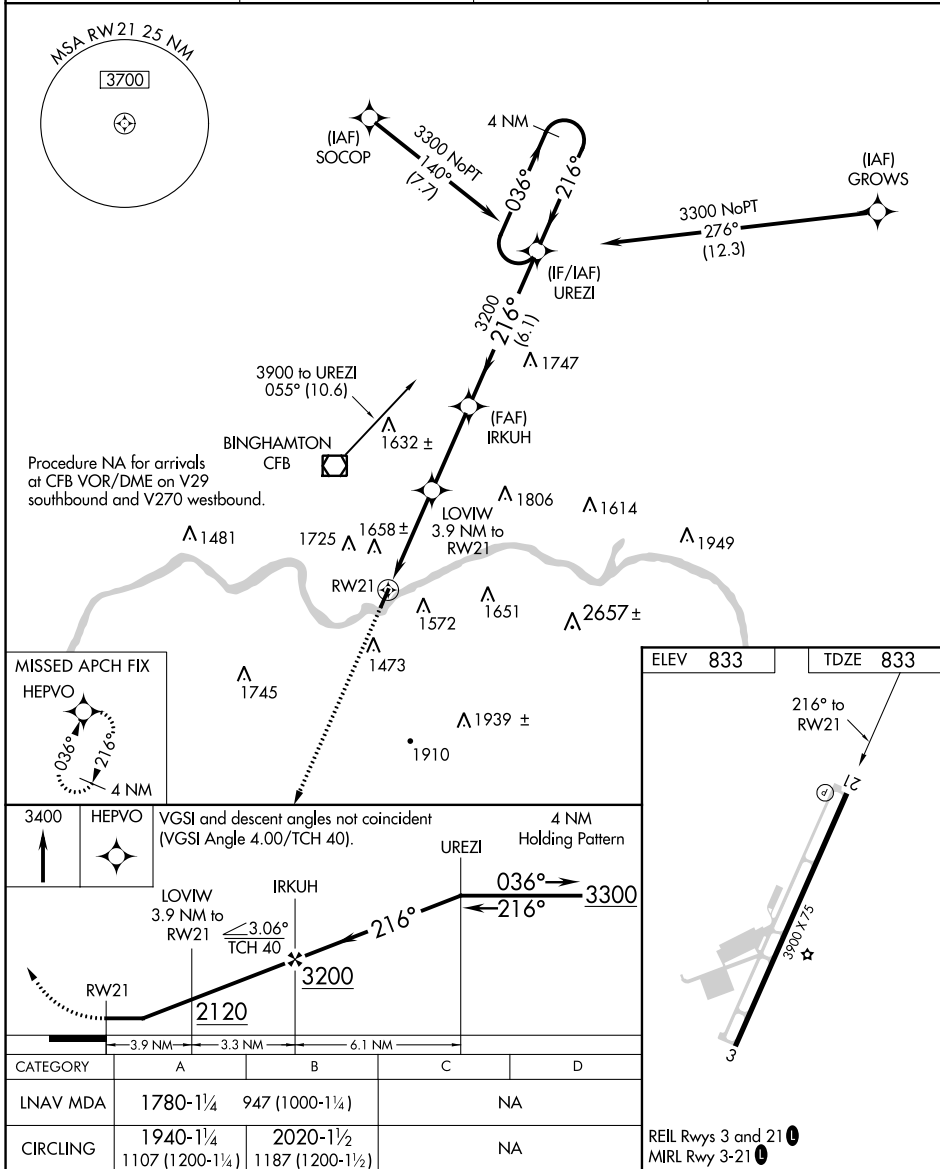
APP CRS <b>216°</b>	Rwy Idg <b>3900</b>
	TDZE <b>833</b>
	Apt Elev <b>833</b>

# RNAV (GPS) RWY 21

TRI-CITIES (CZG)

<b>▼</b> DME/DME RNP-0.3 NA. Procedure NA at night.	MISSED APPROACH: Climb to 3400 direct HEPVO and hold.
<b>▲</b> NA <b>☄</b> -17°C Rwy 21 helicopter visibility reduction below 1 SM NA.	

AWOS-3 <b>119.075</b>	BINGHAMTON APP CON * <b>118.6 257.625</b>	CLNC DEL <b>121.7</b>	UNICOM <b>122.8 (CTAF) 0</b>
--------------------------	--	--------------------------	---------------------------------



NE-2, 16 JUN 2022 to 14 JUL 2022

NE-2, 16 JUN 2022 to 14 JUL 2022