



WAAS CH <b>42521</b> <b>W20A</b>	APP CRS <b>202°</b>	Rwy Idg TDZE <b>772</b> Apt Elev <b>772</b>	<b>5501</b>
--	------------------------	---	-------------

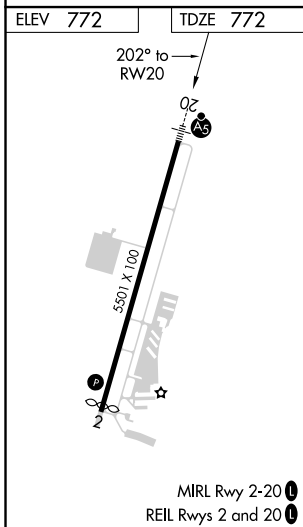
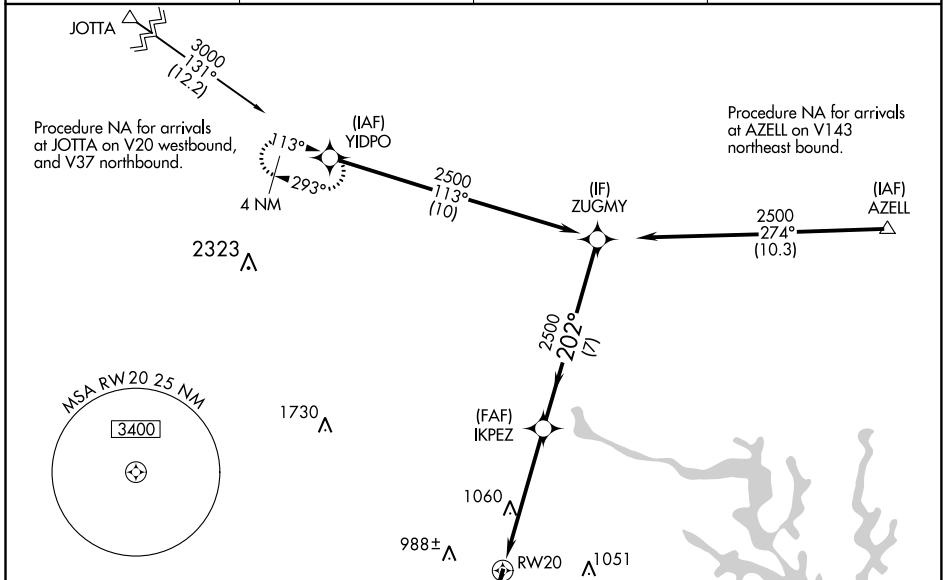
# RNAV (GPS) RWY 20

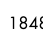

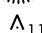


MID-CAROLINA RGNL (RUQ)

**⚠** For uncompensated Baro-VNAV systems, LNAV/VNAV NA below -16° C (4°F) or above 39°C (102°F). DME/DME RNP-0.3 NA. When local altimeter setting not received, use Lexington altimeter setting and increase all DA 37 feet and all MDA 40 feet, increase LNAV Cat C and D visibility 1/8 SM and Circling Cat C visibility 1/8 SM and Circling Cat D 1/4 SM. For inop ALS when using Lexington altimeter setting, increase LNAV Cat C and D visibility to 1 1/4 SM. VDP and Baro-VNAV NA when using Lexington altimeter setting. For inop ALS, increase LNAV/VNAV visibility to 1/8 SM all Cats.

**MALS**  
  
**MISSED APPROACH:**  
 Climb to 2100 then climbing right turn to 3400 direct YIDPO and hold.

AWOS-3 <b>118.175</b>	CHARLOTTE APP CON <b>128.325 307.8</b>	CLNC DEL <b>127.35</b>	UNICOM <b>122.725 (CTAF)</b> 
--------------------------	---	---------------------------	---



ELEV 772	TDZE 772	  		
*LNAV only.				
		IKPEZ 2500 *1.7 NM to RWY 20	ZUGMY 2500 GP 3.00° TCH 46	
1.7 NM		3.6 NM	7 NM	
CATEGORY	A	B	C	D
LPV DA		972-1/2	200 (200-1/2)	
LNAV/VNAV DA		1032-1/2	260 (300-1/2)	
LNAV MDA	1360-1/2	588 (600-1/2)	1360-1/4	588 (600-1/4)
 CIRCLING	1360-1	588 (600-1)	1440-1 3/4 668 (700-1 3/4)	1440-2 668 (700-2)

SE-2, 16 JUN 2022 to 14 JUL 2022

SE-2, 16 JUN 2022 to 14 JUL 2022