

| | | | | |
|---|------------------------|-----------------------------|--|--|
| VOR/DME BJC 115.4 Chan 101 | APP CRS 284° | Rwy Idg TDZE Apt Elev | 30L 7002 5628 5673 | 30R 9000 5599 5673 |
|---|------------------------|-----------------------------|--|--|

VOR/DME RWY 30L/R

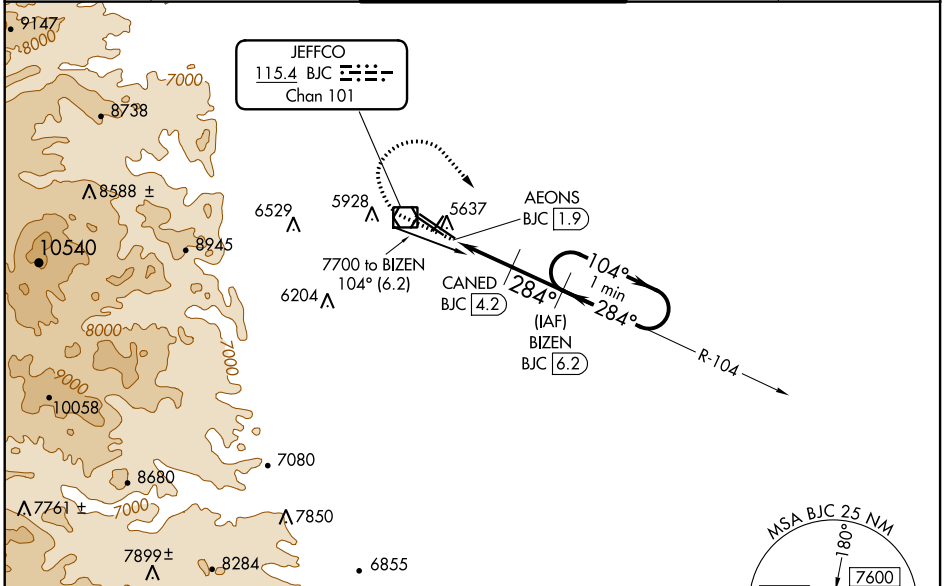
ROCKY MOUNTAIN METRO (BJC)

NA When local altimeter setting not received, use Denver Intl altimeter setting and increase all MDA 100 feet. Increase S-30L Cats C/D visibility to 1 mile and Circling Cat C to 2 1/2 mile. For inoperative MALSR, increase S-30R all Cats visibility to 1 mile. For inoperative MALSR, when using Denver Intl altimeter setting, increase S-30R Cats C/D visibility to 1 1/2 mile.

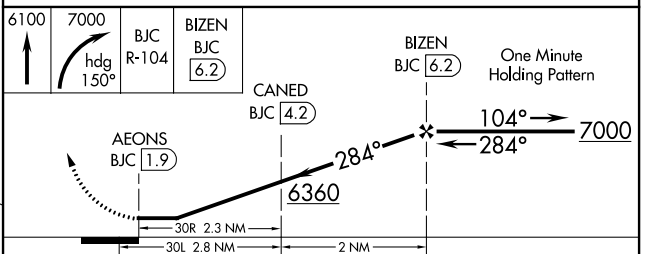
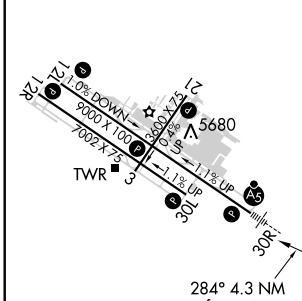
MALSR Rwy 30R

MISSED APPROACH: Climb to 6100 then climbing right turn to 7000 on heading 150° and on BJC VOR/DME R-104 to BIZEN/BJC 6.2 DME and hold.

| | | | | |
|-----------------------|--|---|-------------------------|--------------------------|
| ATIS 126.25 | DENVER APP CON 125.12 263.02 | METRO TOWER * 118.6(CTAF) 233.7 | GND CON 121.7 | CLNC DEL 132.6 |
|-----------------------|--|---|-------------------------|--------------------------|



| | |
|-----------|------------------------|
| ELEV 5673 | D TDZE 30L 5628 |
| | TDZE 30R 5599 |



| CATEGORY | A | B | C | D |
|-------------------|------------------------|--------------------|------------------------|----------------------|
| S-30R | 5920-1/2 321 (300-1/2) | | 5920-3/4 321 (300-3/4) | |
| S-30L | 5920-1 292 (300-1) | | 5920-7/8 292 (300-7/8) | |
| C CIRCLING | 6180-1 507 (600-1) | 6240-1 567 (600-1) | 6360-2 687 (700-2) | 6860-3 1187 (1200-3) |

HIRL Rws 12L-30R **I**
MIRL Rws 3-21 and 12R-30L **I**
REIL Rws 12L, 12R and 30L **I**

SW-1, 16 JUN 2022 to 14 JUL 2022

SW-1, 16 JUN 2022 to 14 JUL 2022