

WAAS CH <b>97499</b>	APP CRS <b>181°</b>	Rwy Idg TDZE <b>5008</b> <b>331</b>	Apt Elev <b>331</b>
-------------------------	------------------------	---	------------------------

# RNAV (GPS) RWY 18

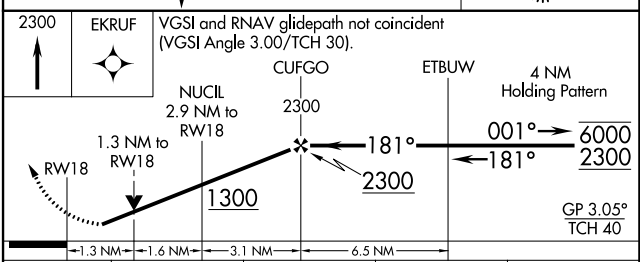
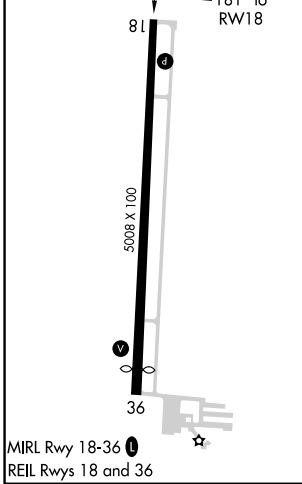
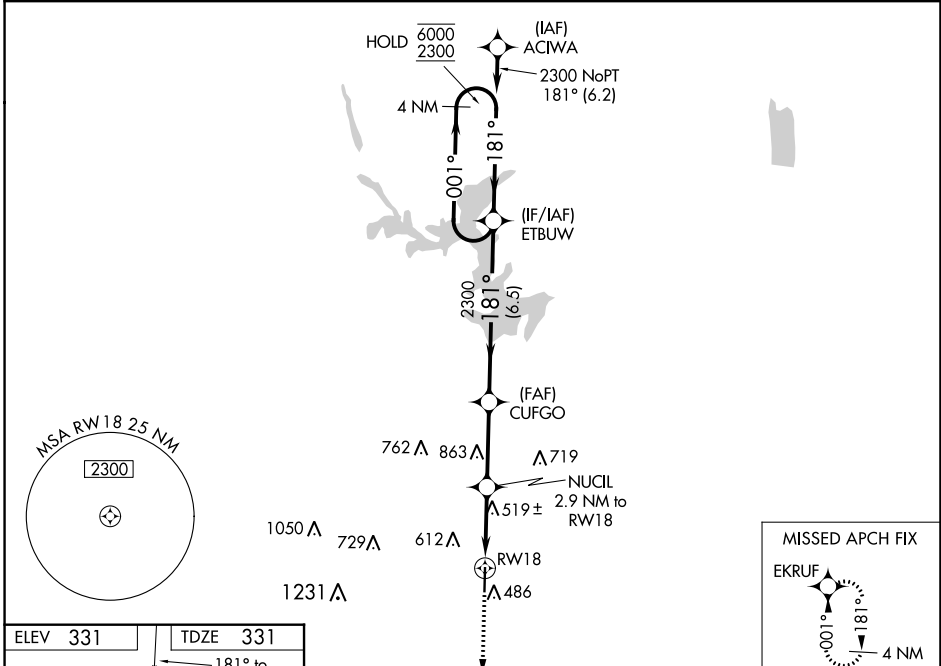
POPLAR BLUFF RGNL BUSINESS (POI<sup>F</sup>)

RNP APCH-GPS.

**⚠** Rwy 18 helicopter visibility reduction below 3/4 SM NA. For uncompensated Baro-VNAV systems, LNAV/VNAV NA below -23°C or above 54°C.

MISSED APPROACH: Climb to 2300 direct EKRUF and hold.

ASOS <b>124.225</b>	MEMPHIS CENTER <b>120.075 289.4</b>	UNICOM <b>123.0 (CTAF) 0</b>
------------------------	--	---------------------------------



ELEV 331 TDZE 331 81 181° to RWY 18 5008 x 100 36 MRL Rwy 18-36 REIL Rwy 18 and 36	2300 EKRUF VGS1 and RNAV glidepath not coincident (VGS1 Angle 3.00/TCH 30). CUFGO ETBUW 4 NM Holding Pattern 6000 2300 GP 3.05° TCH 40
CATEGORY LPV DA LNAV/VNAV DA LNAV MDA CIRCLING	A B C D
634-7/8 303 (400-7/8) 675-1 344 (400-1) 800-1 469 (500-1) 800-1 3/8 469 (500-1 3/8) 840-1 509 (600-1) 920-1 589 (600-1) 920-1 1/2 589 (600-1 1/2) 980-2 649 (700-2)	1300 1.3 NM to RWY 18 1.6 NM 3.1 NM 6.5 NM 181° 001° 181°

NC-3, 16 JUN 2022 to 14 JUL 2022

NC-3, 16 JUN 2022 to 14 JUL 2022