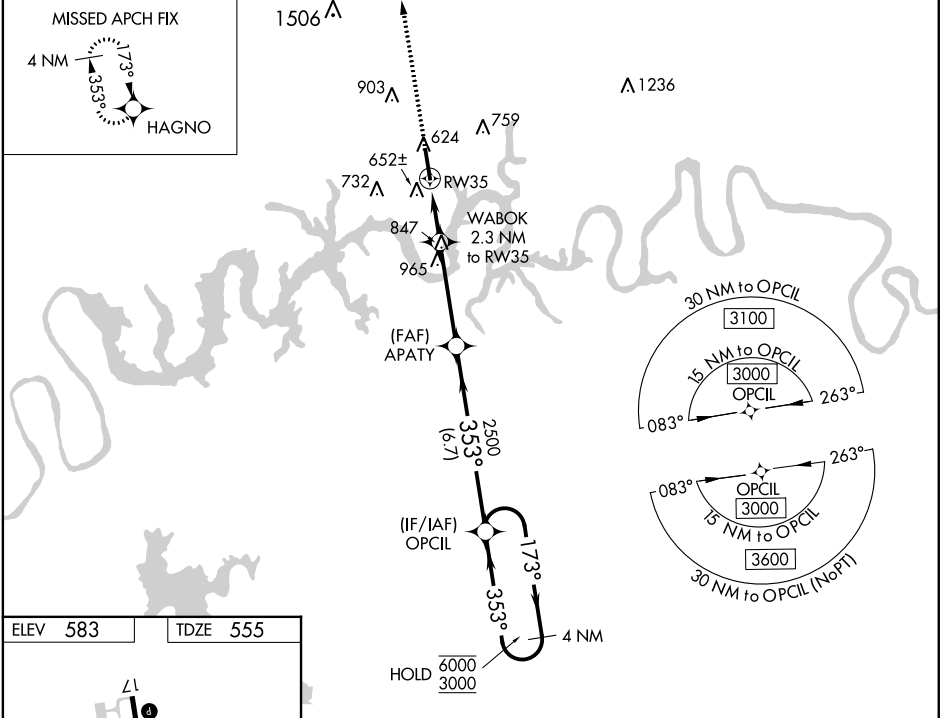


WAAS CH <b>65627</b> <b>W35A</b>	APP CRS <b>353°</b>	Rwy Idg TDZE Apt Elev	<b>6300</b> <b>555</b> <b>583</b>
--	------------------------	-----------------------------	---

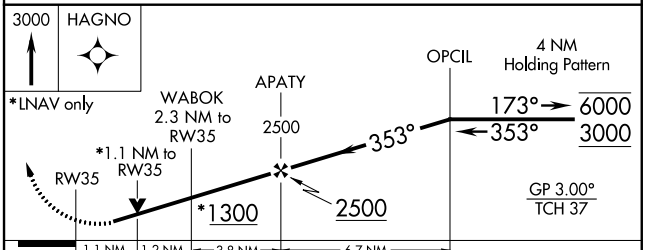
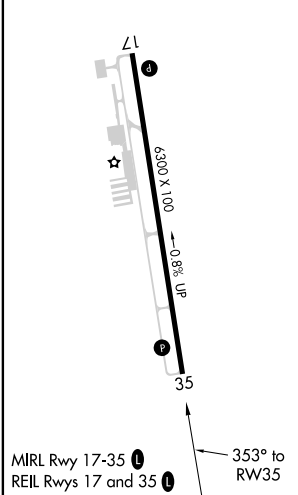
# RNAV (GPS) RWY 35

MUSIC CITY EXEC (XNX)

RNP APCH.			MISSED APPROACH: Climb to 3000 direct HAGNO and hold.
<p>▼ For uncompensated Baro-VNAV systems, LNAV/VNAV NA ▲ below -16°C or above 54°C. Rwy 35 helicopter visibility reduction below ¾ SM NA.</p>			
AWOS-3 <b>132.725</b>	NASHVILLE APP CON <b>118.4 360.7</b>	GCO <b>135.075</b>	UNICOM <b>123.05 (CTAF) 0</b>



ELEV 583	TDZE 555
----------	----------



CATEGORY	A	B	C	D
LPV DA		805-¾	250 (300-¾)	
LNAV/VNAV DA		829-7/8	274 (300-7/8)	
LNAV MDA		920-1	365 (400-1)	
CIRCLING	1100-1	1120-1	1240-1¾	1280-2¼
	517 (600-1)	537 (600-1)	657 (700-1¾)	697 (700-2¼)

SE-1, 16 JUN 2022 to 14 JUL 2022

SE-1, 16 JUN 2022 to 14 JUL 2022