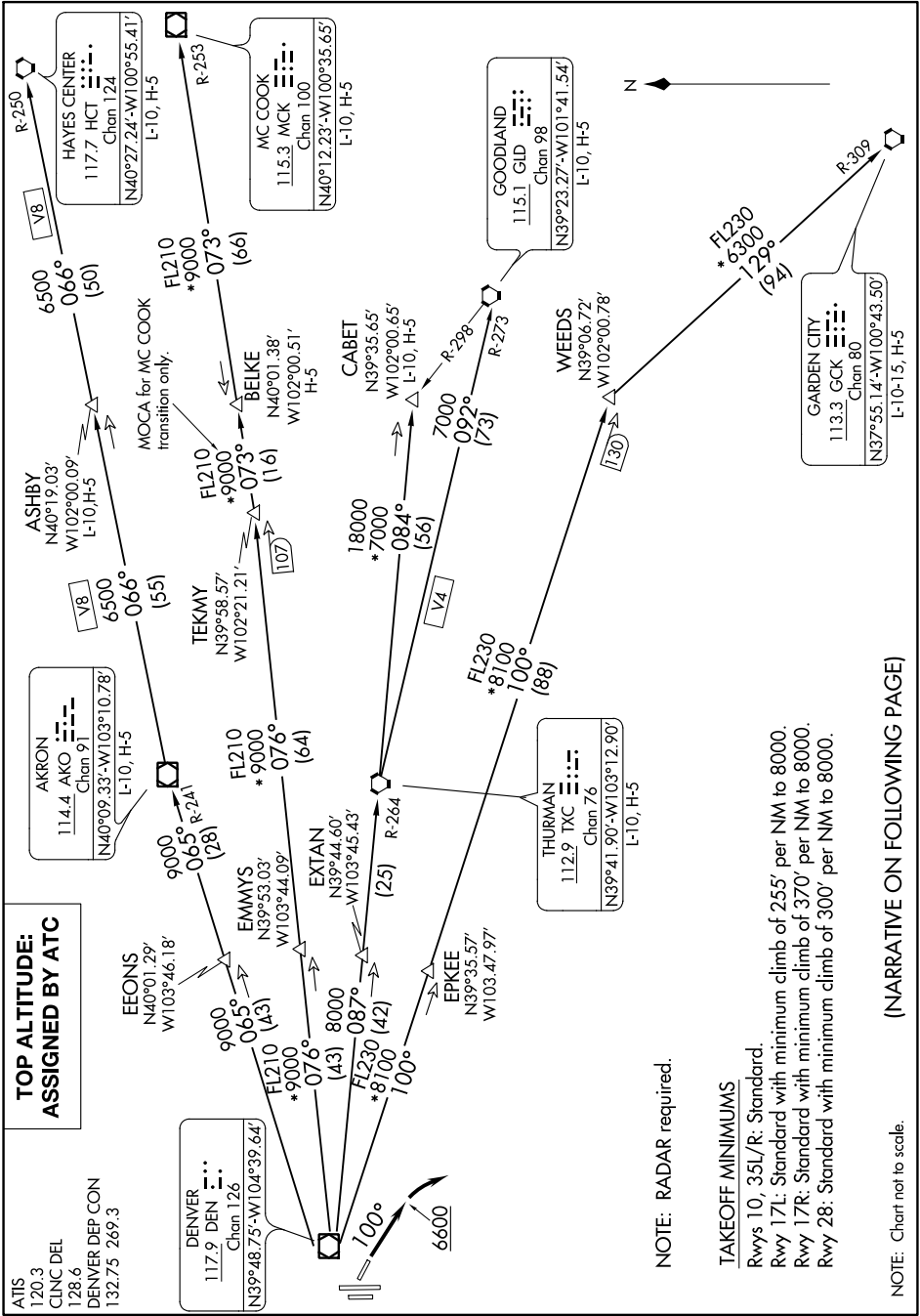


PLAINS ONE DEPARTURE

AL-5715 (FAA)

CENTENNIAL (APA)
DENVER, COLORADO



SW-1, 16 JUN 2022 to 14 JUL 2022

SW-1, 16 JUN 2022 to 14 JUL 2022

**TOP ALTITUDE:
ASSIGNED BY ATC**

ATIS
120.3
CLNC DEL
128.6
DENVER DEP CON
132.75 269.3

DENVER
117.9 DEN
Chan 126
N39°48.75'-W104°39.64'

NOTE: RADAR required.

TAKEOFF MINIMUMS

- Rwys 10, 35L/R: Standard
- Rwy 17L: Standard with minimum climb of 255' per NM to 8000.
- Rwy 17R: Standard with minimum climb of 370' per NM to 8000.
- Rwy 28: Standard with minimum climb of 300' per NM to 8000.

NOTE: Chart not to scale.

(NARRATIVE ON FOLLOWING PAGE)

PLAINS ONE DEPARTURE