

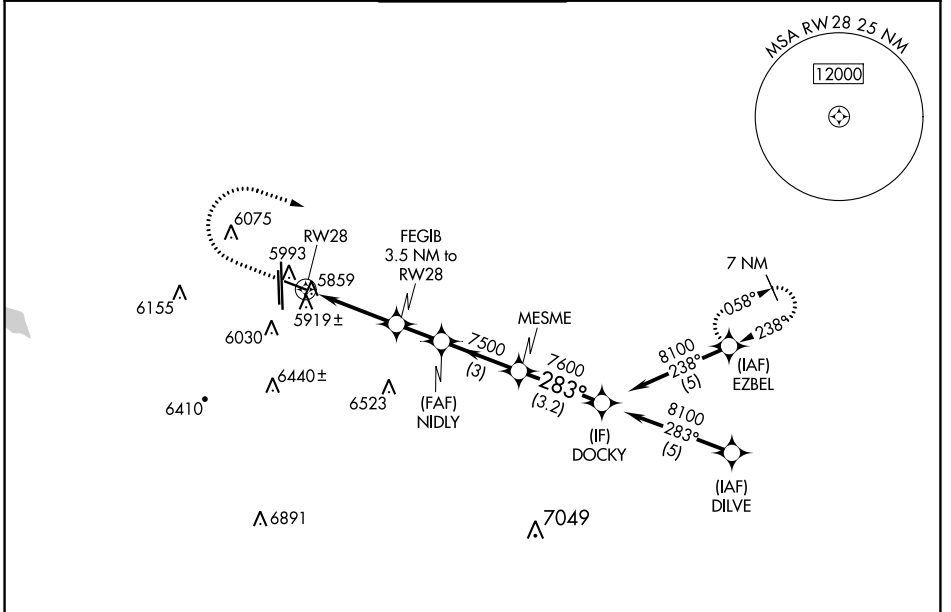
WAAS CH 82107 W28A	APP CRS 283°	Rwy Idg TDZE Apt Elev	4800 5813 5885
--	------------------------	-----------------------------	---

RNAV (GPS) RWY 28

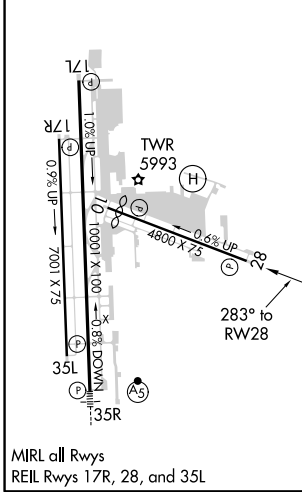
CENTENNIAL (APA)

RNP APCH.	MISSED APPROACH: Climb to 6400 then climbing right turn to 9000 direct EZBEL and hold.
<p>▼ For uncompensated Baro-VNAV systems, LNAV/VNAV NA below -26°C or above 49°C. Rwy 28 helicopter visibility reduction below 3/4 SM NA. Circling Rwy 35L NA at night.</p>	

ATIS 120.3	DENVER APP CON 132.75 269.3	CENTENNIAL TOWER 118.9	GND CON 121.8	CLNC DEL 128.6
----------------------	---------------------------------------	----------------------------------	-------------------------	--------------------------



ELEV 5885	TDZE 5813
------------------	------------------



6400	9000	EZBEL	DOCKY
↑	↷	✦	
*LNAV only.			
	FEGIB 3.5 NM to RWY28	NIDLY 7500	MESME 7600
	*1.3 NM to RWY28		DOCKY 8100
		6940*	7500
	1.3	2.2 NM	1.7 NM
		3 NM	3.2 NM
			GP 3.00° TCH 41

CATEGORY	A	B	C	D
LPV DA	6079-7/8 266 (200-7/8)			
LNAV/VNAV DA	6119-1 306 (300-1)			
LNAV MDA	6260-1	447 (400-1)	6260-13/8	447 (400-13/8)
CIRCLING	6400-1 515 (600-1)	6540-1 655 (700-1)	6740-2 1/2 855 (900-2 1/2)	6900-3 1015 (1100-3)

SW-1, 16 JUN 2022 to 14 JUL 2022

SW-1, 16 JUN 2022 to 14 JUL 2022