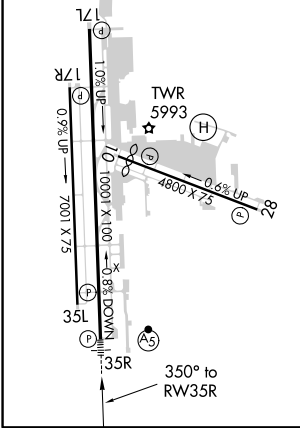
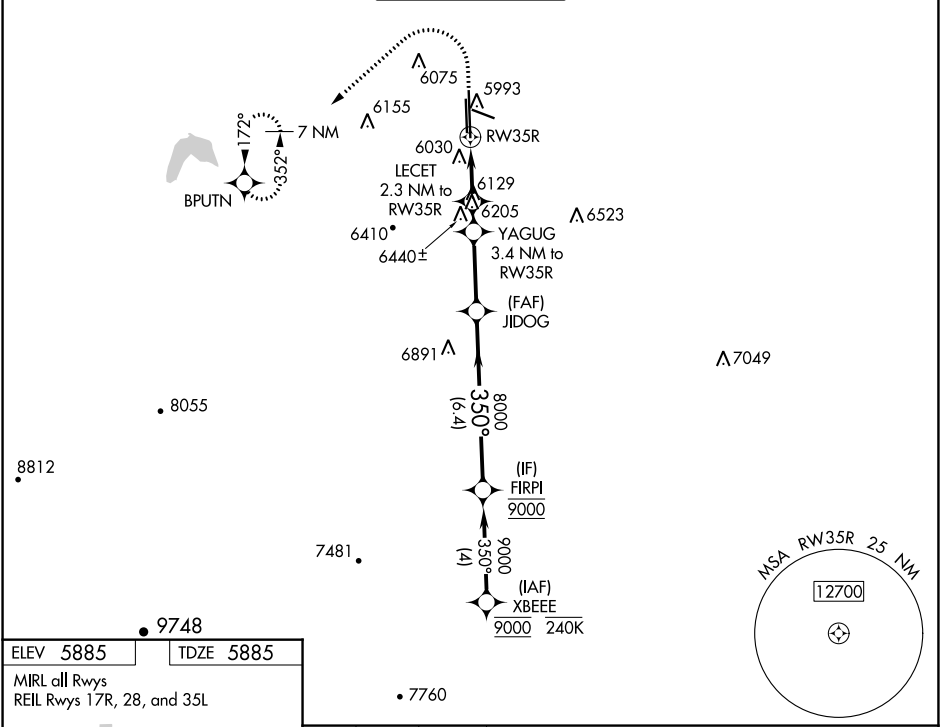


WAAS CH <b>40339</b> <b>W35A</b>	APP CRS <b>350°</b>	Rwy Idg TDZE Apt Elev	<b>10001</b> <b>5885</b> <b>5885</b>
--	------------------------	-----------------------------	--

# RNAV (GPS) RWY 35R

CENTENNIAL (APA)

RNP APCH.		CENTENNIAL TOWER <b>118.9</b>		GND CON <b>121.8</b>		CLNC DEL <b>128.6</b>	
<p><b>▽</b> Circling Rwy 35L NA at night. For uncompensated Baro-VNAV systems, LNAV/VNAV NA below -21°C or above 54°C. For inop ALS, increase LNAV Cats C/D visibility to 1 3/8 SM.</p> <p><b>▲</b></p>		MALS R		<p>MISSED APPROACH: (Do not exceed 240K until BPUTN) Climb to 8200 then climbing left turn to 9600 direct BPUTN and hold.</p>			



8200	9600	BPUTN	YAGUG	JIDOG	FIRPI			
			3.4 NM to RW35R	8000	9000			
			2.3 NM to RW35R					
			1.4 NM to RW35R					
			6700	7060	8000			
			1.4 NM	0.9 NM	1.1 NM			
			2.9 NM	6.4 NM				
CATEGORY	A		B		C		D	
LPV	DA		6085-1/2		200 (200-1/2)			
LNAV/VNAV	DA		6324-3/4		439 (500-3/4)			
LNAV MDA	6380-1/2		495 (500-1/2)		6380-1		495 (500-1)	
<b>C</b> CIRCLING	6400-1 515 (600-1)		6540-1 655 (700-1)		6740-2 1/2 855 (900-2 1/2)		6760-2 3/4 875 (900-2 3/4)	

SW-1, 16 JUN 2022 to 14 JUL 2022

SW-1, 16 JUN 2022 to 14 JUL 2022