

WAAS CH <b>93922</b> <b>W17A</b>	APP CRS <b>172°</b>	Rwy Idg TDZE Apt Elev	<b>4305</b> <b>1616</b> <b>1616</b>
--	------------------------	-----------------------------	---

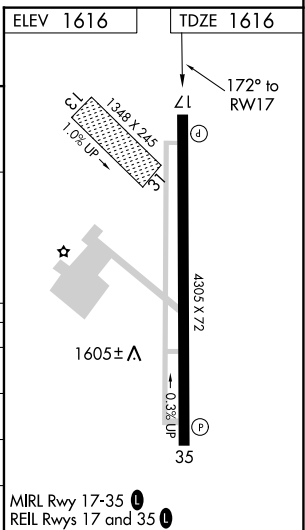
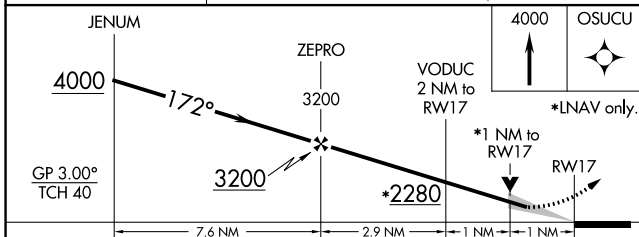
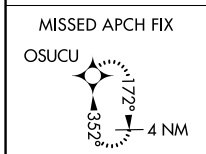
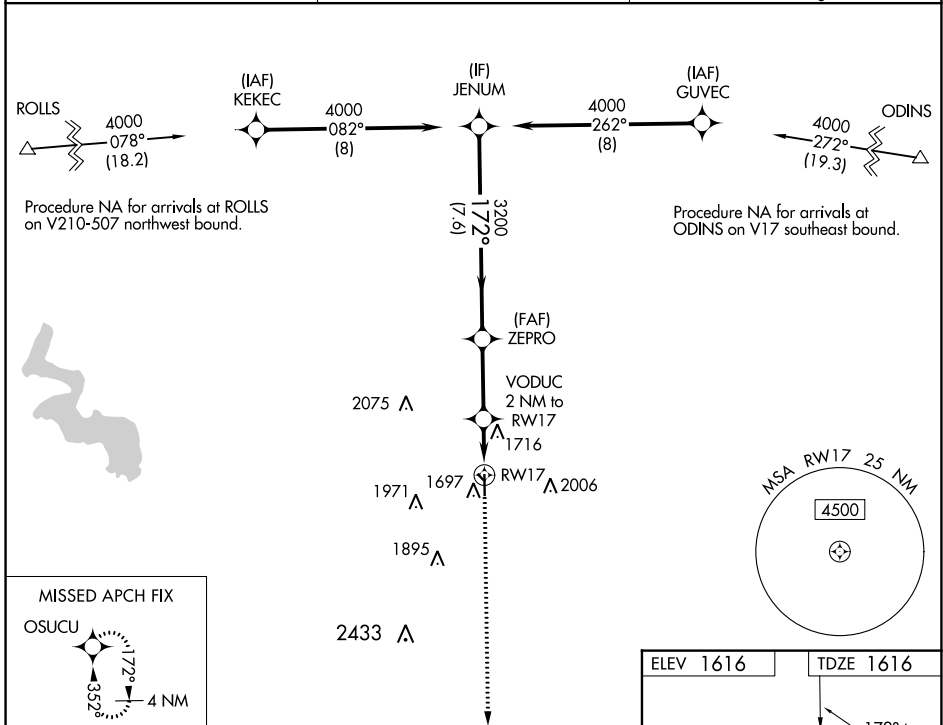
# RNAV (GPS) RWY 17

CLINTON RGNL (CLK)

**⚠** DME/DME RNP-0.3 NA. For uncompensated Baro-VNAV systems, LNAV/VNAV NA below -12°C (11°F) or above 54°C (130°F). Circling NA to Rwy 13 and 31. When local altimeter setting not received, use Weatherford altimeter setting; Increase DA to 1898 and all visibilities ½ mile; increase all MDA 40 feet and visibility Cat C ¼ mile. Baro-VNAV and VDP NA when using Weatherford altimeter setting.

MISSED APPROACH: Climb to 4000 direct OSUCU and hold.

AWOS-3 <b>119.225</b>	FORT WORTH CENTER <b>128.4 269.37</b>	UNICOM <b>122.8 (CTAF) 0</b>
--------------------------	--	---------------------------------



	A	B	C	D
GP 3.00° TCH 40				
CATEGORY	A	B	C	D
LPV DA	1866-7/8	250 (300-7/8)		NA
LNAV/VNAV DA	1866-7/8	250 (300-7/8)		NA
LNAV MDA	1980-1	364 (400-1)		NA
CIRCLING	2100-1 484 (500-1)	2220-1 604 (700-1)	2320-2 704 (800-2)	NA

SC-1, 16 JUN 2022 to 14 JUL 2022

SC-1, 16 JUN 2022 to 14 JUL 2022