

WAAS CH 70423 W35A	APP CRS 352°	Rwy Idg 4305 TDZE 1616 Apt Elev 1616
--	------------------------	---

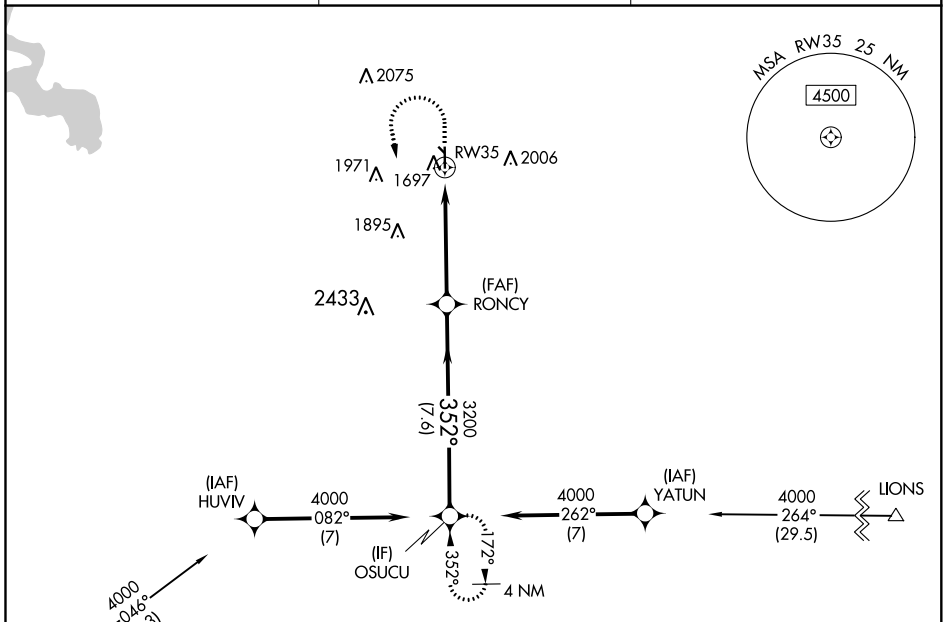
RNAV (GPS) RWY 35

CLINTON RGNL (CLK)

⚠ DME/DME RNP-0.3 NA. For uncompensated Baro-VNAV systems, LNAV/VNAV NA below -12°C (11°F) or above 54°C (130°F). Circling NA to Rwy 13 and 31. When local altimeter setting not received, use Weatherford altimeter setting; Increase DA to 1902 and all visibilities ½ mile; increase all MDA 40 feet and visibility Cat C ¼ mile. Baro-VNAV and VDP NA when using Weatherford altimeter setting.

MISSED APPROACH: Climb to 2400 then climbing left turn to 4000 direct OSUCU and hold.

AWOS-3 119.225	FORT WORTH CENTER 128.4 269.37	UNICOM 122.8 (CTAF) 0
--------------------------	--	---------------------------------



SC-1, 16 JUN 2022 to 14 JUL 2022

SC-1, 16 JUN 2022 to 14 JUL 2022

ELEV 1616		TDZE 1616	
2400	4000	OSUCU	VGSI and RNAV glidepath not coincident (VGSI Angle 3.00/TCH 40).
*LNAV only.		OSUCU	
CATEGORY	A	B	C
LPV DA	1866-7/8	250 (300-7/8)	NA
LNAV/VNAV DA	1870-7/8	254 (300-7/8)	NA
LNAV MDA	2040-1	424 (500-1)	2040-1 1/4
CIRCLING	2100-1	2220-1	2320-2
	484 (500-1)	604 (700-1)	704 (800-2)

