

WAAS CH 63203 W18A	APP CRS 182°	Rwy Idg TDZE Apt Elev	8003 264 264
--	------------------------	-----------------------------	---

RNAV (GPS) RWY 18

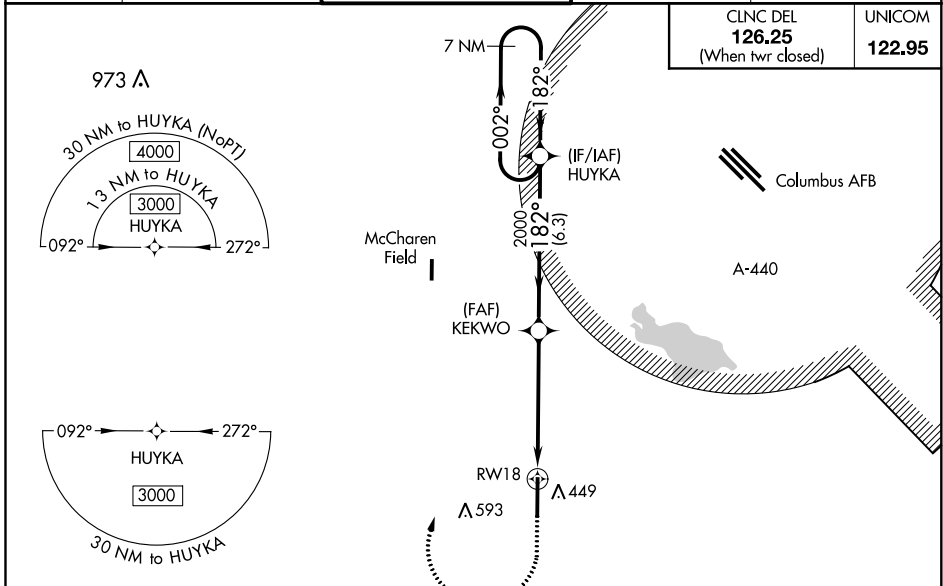
GOLDEN TRIANGLE RGNL (GTR)

⚠ For uncompensated Baro-VNAV systems, LNAV/VNAV NA below -1.5°C (5°F) or above 54°C (130°F). DME/DME RNP-0.3 NA. For inop MALS, increase LPV Cat E visibility ½ mile, increase LNAV/VNAV Cat E and LNAV Cat E visibility ½ mile. When local altimeter setting not received, use Columbus AFB altimeter setting and increase all DA 39 feet and all MDA 40 feet; increase LNAV/VNAV all Cats and LNAV Cats C/D/E visibility ⅛ mile. For inop MALS when using Columbus AFB altimeter setting, increase LPV Cat E visibility ¼ mile, increase LNAV/VNAV Cat E and LNAV Cat E visibility ½ mile. Baro-VNAV and VDP NA when using Columbus AFB altimeter setting.

MALS
MISSED APPROACH
Climb to 800 then
climbing right turn to
3000 direct HUYKA
and hold.

ATIS 126.375	COLUMBUS APP CON* 135.6 323.275	GOLDEN TRIANGLE TOWER* 118.2 (CTAF) 0 298.875	GND CON 135.375 322.475	CLNC DEL 135.375 322.475
------------------------	---	---	-----------------------------------	------------------------------------

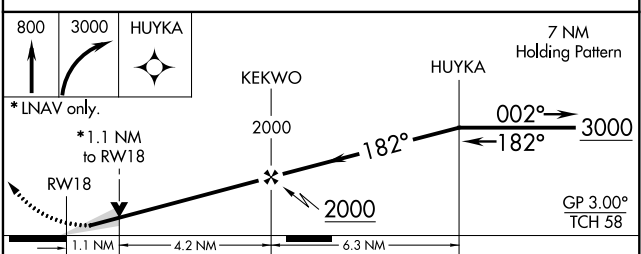
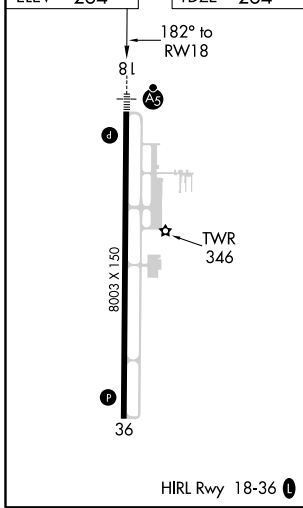
CLNC DEL 126.25 (When twr closed)	UNICOM 122.95
--	-------------------------



SC-4, 16 JUN 2022 to 14 JUL 2022

SC-4, 16 JUN 2022 to 14 JUL 2022

ELEV 264	TDZE 264
-----------------	-----------------



CATEGORY	A	B	C	D	E
LPV DA		464-½	200 (200-½)		
LNAV/VNAV DA		670-⅞	406 (500-⅞)		
LNAV MDA	660-½	396 (400-½)	660-⅝	396 (400-⅝)	
CIRCLING	760-1	496 (500-1)	960-2 696 (700-2)	960-2¼ 696 (700-2¼)	960-2½ 696 (700-2½)