

WAAS CH <b>40037</b> <b>W03A</b>	APP CRS <b>033°</b>	Rwy Idg <b>5000</b> TDZE <b>74</b> Apt Elev <b>75</b>
--	------------------------	---

# RNAV (GPS) RWY 3

MARTIN COUNTY (MCZ)

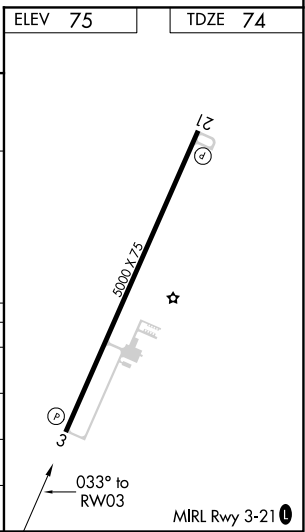
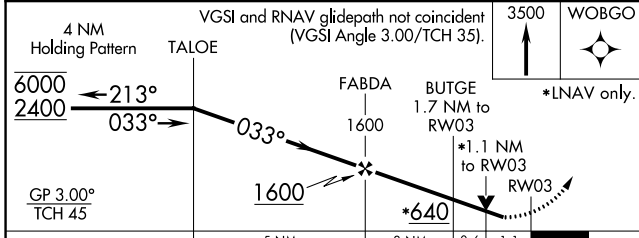
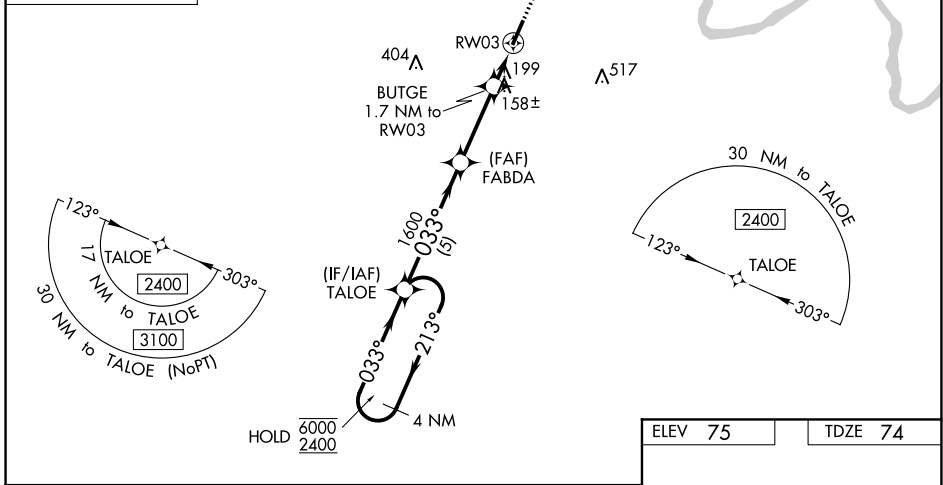
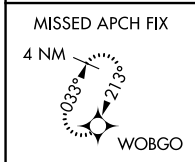
RNP APCH.

Baro-VNAV and VDP NA when using Rocky Mount altimeter setting. Rwy 3 helicopter visibility reduction below 3/4 SM NA. For uncompensated Baro-VNAV systems, LNAV/VNAV NA below -15°C or above 54°C.

MISSED APPROACH: Climb to 3500 direct WOBGO and hold, continue climb-in-hold to 3500.

WASHINGTON CENTER  
**123.85 279.65**

UNICOM  
**122.8 (CTAF) 0**



CATEGORY	A	B	C	D
LPV DA	336-1		262 (300-1)	
LNAV/VNAV DA	476-1 3/8		402 (500-1 3/8)	
LNAV MDA	460-1	386 (400-1)	460-1 1/8	386 (400-1 1/8)
CIRCLING	500-1 425 (500-1)	540-1 465 (500-1)	680-1 1/4 605 (700-1 1/4)	880-2 1/2 805 (900-2 1/2)

SE-2, 16 JUN 2022 to 14 JUL 2022

SE-2, 16 JUN 2022 to 14 JUL 2022