

|  |                        |   |             |
|--|------------------------|---|-------------|
| WAAS<br>CH <b>93934</b><br><b>W02A</b> | APP CRS<br><b>021°</b> | Rwy Idg<br>TDZE <b>718</b><br>Apt Elev <b>718</b> | <b>5001</b> |
|--|------------------------|---|-------------|

# RNAV (GPS) RWY 2

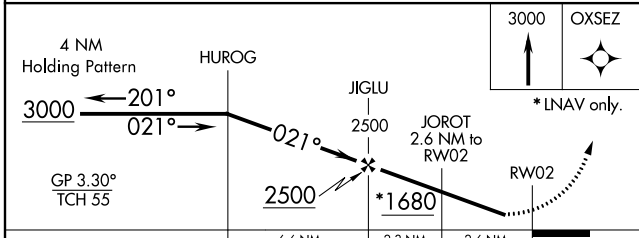
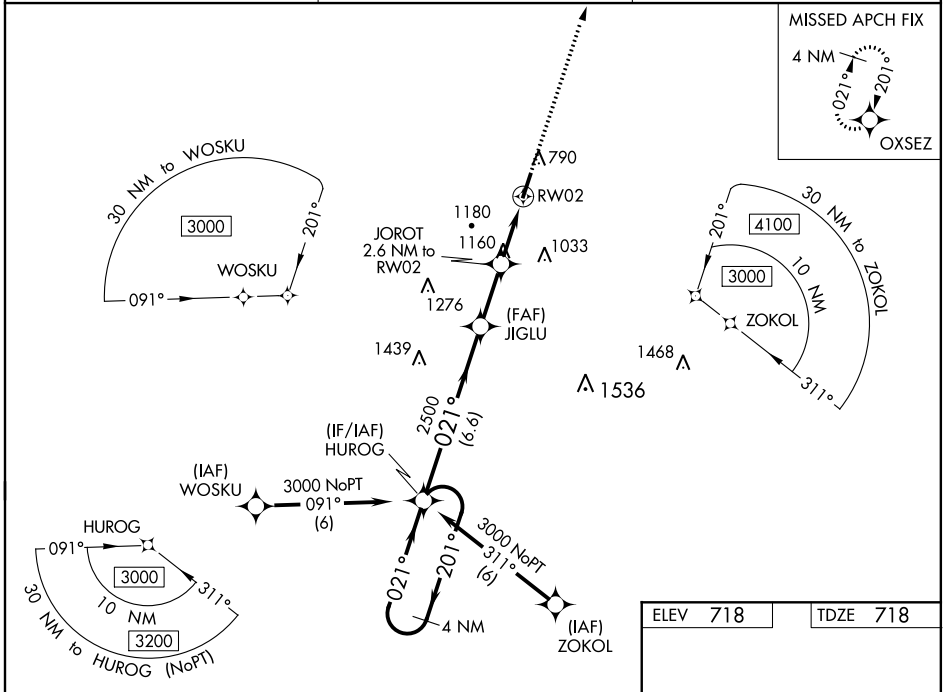
ELLINGTON (LUG)

RNP APCH-GPS.

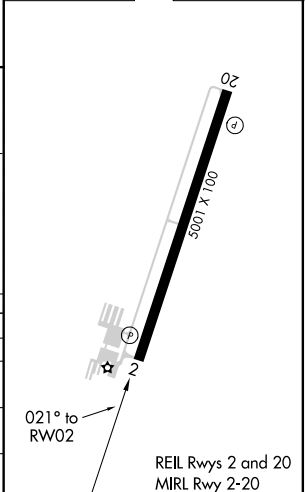
When local altimeter setting not received, use Nashville Intl altimeter setting: increase LPV DA to 1096 feet and all visibilities  $\frac{1}{8}$  SM and LNAV/VNAV DA to 1531 feet and all visibilities  $\frac{1}{2}$  SM; increase all MDA 120 feet and visibility LNAV Cats B/C/D and Circling Cats A/B/C  $\frac{1}{2}$  SM. Baro-VNAV NA when using Nashville Intl altimeter. For uncompensated Baro-VNAV systems, LNAV/VNAV NA below -16°C or above 54°C. Rwy 2 helicopter visibility reduction below  $\frac{3}{4}$  SM NA. Circling Rwy 20 NA at night.

MISSED APPROACH: Climb to 3000 direct OXSEZ and hold.

|                          |   |                               |
|--------------------------|---|-------------------------------|
| AWOS-3<br><b>135.775</b> | MEMPHIS CENTER<br><b>128.15 323.125</b> | UNICOM (CTAF)<br><b>122.8</b> |
|--------------------------|---|-------------------------------|



|          |          |
|----------|----------|
| ELEV 718 | TDZE 718 |
|----------|----------|



| CATEGORY     | A                     | B                         | C  | D                      |
|--------------|-----------------------|---------------------------|--|------------------------|
| LPV DA       | 993- $\frac{7}{8}$    | 275 (300- $\frac{7}{8}$ ) |  | NA                     |
| LNAV/VNAV DA | 1428-2                | 710 (800-2)               |  | NA                     |
| LNAV MDA     | 1420-1                | 702 (800-1)               | 1420-2   | 702 (800-2)            |
| CIRCLING     | 1420-1<br>702 (800-1) | 1480-1<br>762 (800-1)     | 1540-2 $\frac{1}{2}$<br>822 (900-2 $\frac{1}{2}$ ) | 1640-3<br>922 (1000-3) |

SE-1, 16 JUN 2022 to 14 JUL 2022

SE-1, 16 JUN 2022 to 14 JUL 2022