

WAAS CH <b>56619</b> <b>W20A</b>	APP CRS <b>201°</b>	Rwy Idg TDZE <b>710</b> Apt Elev <b>718</b>	<b>5001</b>
--	------------------------	---	-------------

# RNAV (GPS) RWY 20

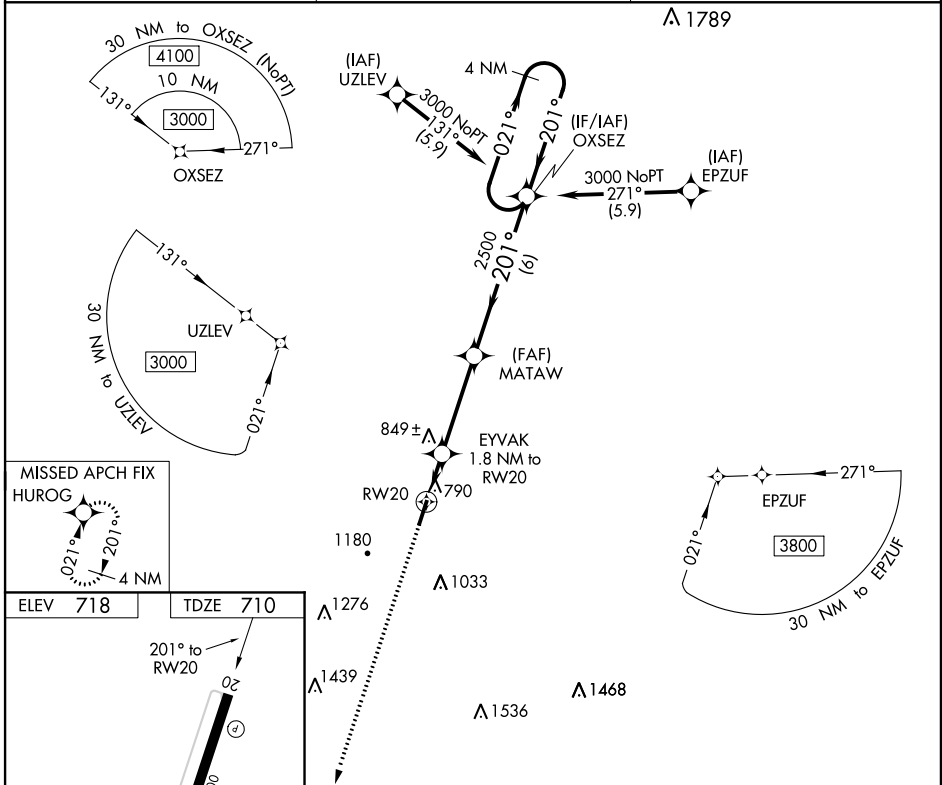
ELLINGTON (LUG)

RNP APCH-GPS.

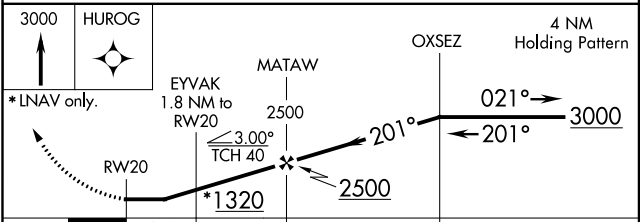
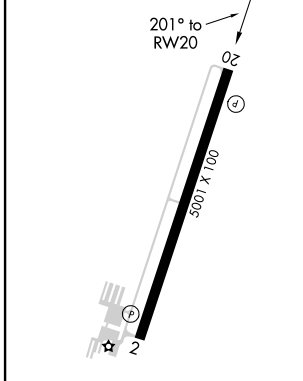
When local altimeter setting not received, use Nashville Intl altimeter setting and increase all MDA 120 feet and visibility LNAV Cats C and D and Circling Cats B and C ¼ SM. Circling to Rwy 2 NA at night. Straight-in to Rwy 20 NA at night, Circling Rwy 20 NA at night. Rwy 20 helicopter visibility reduction below 1 SM NA.

MISSED APPROACH: Climb to 3000 direct HUROG and hold.

AWOS-3 <b>135.775</b>	MEMPHIS CENTER <b>128.15 323.125</b>	UNICOM <b>122.8 (CTAF)</b>
--------------------------	---	-------------------------------



ELEV 718	TDZE 710
----------	----------



CATEGORY	A	B	C	D
LNAV MDA	1100-1	390 (400-1)	1100-1½	390 (400-1½)
<b>C</b> CIRCLING	1300-1 582 (600-1)	1480-1 762 (800-1)	1540-2½ 822 (900-2½)	1640-3 922 (1000-3)

SE-1, 16 JUN 2022 to 14 JUL 2022

SE-1, 16 JUN 2022 to 14 JUL 2022