

WAAS CH 57903 W08A	APP CRS 083°	Rwy Idg TDZE Apt Elev	5102 3260 3279
--	------------------------	-----------------------------	---

RNAV (GPS) RWY 8

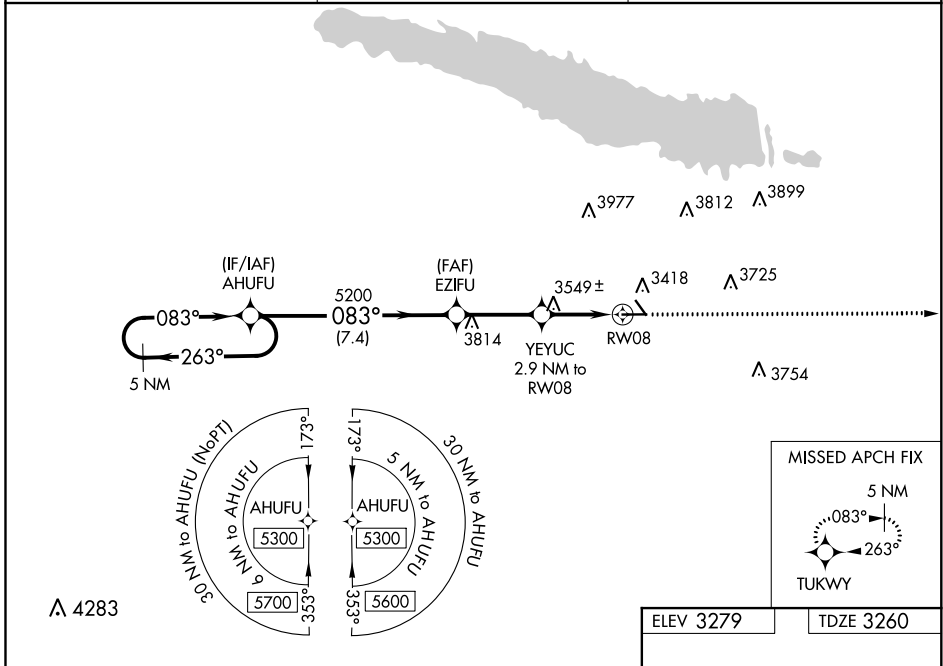
SEARLE FLD (OGA)

RNP APCH.

▼ For uncompensated Baro-VNAV systems, LNAV/VNAV NA below -21°C or above 54°C. When local altimeter setting not received, use Imperial altimeter setting and increase all DA 86 feet and all MDA 100 feet, increase LPV all Cats visibility 1/8 SM, LNAV/VNAV all Cats and Circling Cat B visibility 1/4 SM. Baro-VNAV NA when using Imperial altimeter setting.

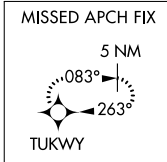
MISSED APPROACH:
Climb to 5200 direct TUKWY and hold.

AWOS-3 121.275	DENVER CENTER 132.7 397.85	UNICOM 122.8 (CTAF) 0
--------------------------	--------------------------------------	---------------------------------

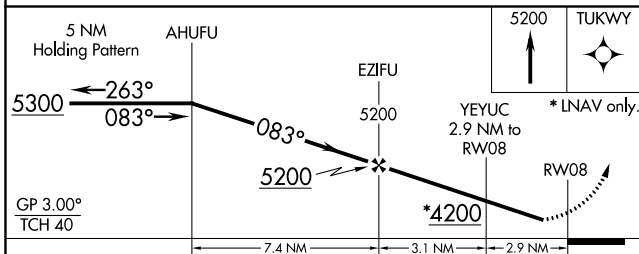


NC-2, 16 JUN 2022 to 14 JUL 2022

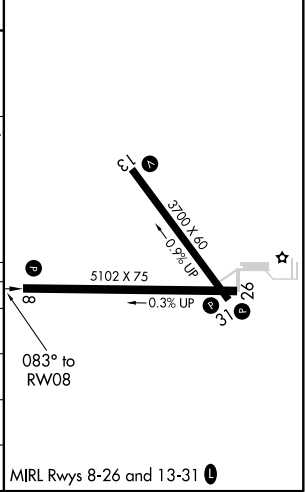
NC-2, 16 JUN 2022 to 14 JUL 2022



ELEV 3279	TDZE 3260
-----------	-----------



CATEGORY	A	B	C	D
LPV DA	3510-1	250 (300-1)		NA
LNAV/VNAV DA	3865-2¼	605 (600-2¼)		NA
LNAV MDA	3800-1	540 (600-1)		NA
CIRCLING	3940-1 661 (700-1)	4000-1 721 (800-1)		NA



MRL Rwy's 8-26 and 13-31 0