

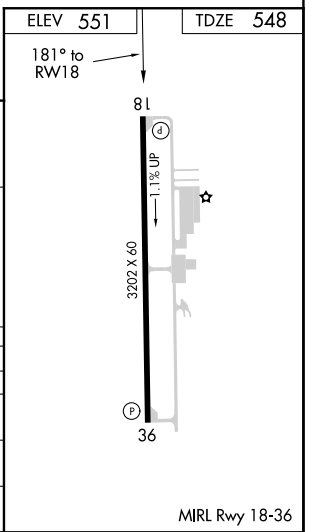
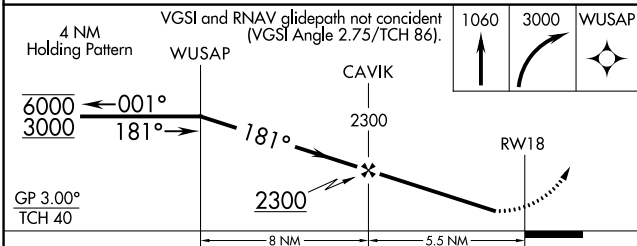
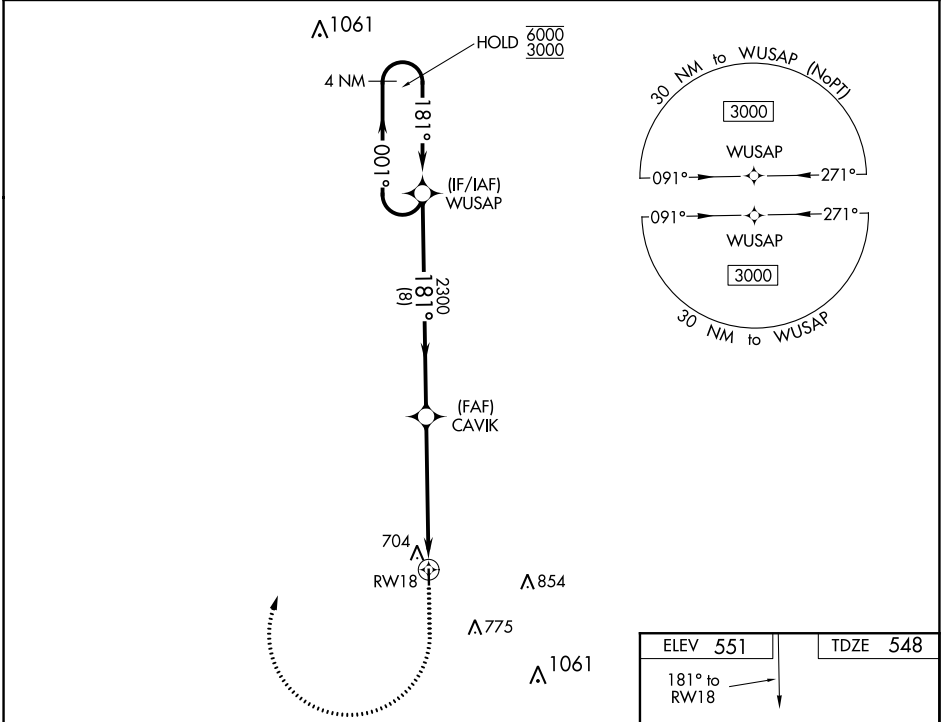
WAAS CH 58338 W18A	APP CRS 181°	Rwy Idg 3202 TDZE 548 Apt Elev 551
--	------------------------	---

RNAV (GPS) RWY 18

HOLLY SPRINGS-MARSHALL COUNTY (M41)

RNP APCH.	<p>▼ Rwy 18 helicopter visibility reduction below 3/4 SM NA. Baro-VNAV NA. Use Olive Branch altimeter setting; when not received, use Oxford altimeter setting and increase LPV DA to 870, and all visibilities 1/8 SM; increase LNAV/VNAV DA to 957 and all MDAs 20 feet.</p> <p>▲ NA</p>	<p>MISSED APPROACH: Climb to 1060 then climbing right turn to 3000 direct WUSAP and hold.</p>
-----------	--	---

OLV AWOS-3 119.925	MEMPHIS APP CON 125.8 338.3	UNICOM 122.8 (CTAF)
------------------------------	---------------------------------------	-------------------------------



CATEGORY	A	B	C	D
LPV DA	858-1 1/8	310 (400-1 1/8)		NA
LNAV/VNAV DA	945-1 1/2	397 (400-1 1/2)		NA
LNAV MDA	1020-1	472 (500-1)	1020-1 3/8 472 (500-1 3/8)	NA
CIRCLING	1080-1 529 (600-1)	1100-1 549 (600-1)	1160-1 3/4 609 (700-1 3/4)	NA

SC-4, 16 JUN 2022 to 14 JUL 2022

SC-4, 16 JUN 2022 to 14 JUL 2022

MIRL Rwy 18-36