

WAAS CH <b>87009</b> <b>W34A</b>	APP CRS <b>343°</b>	Rwy Idg TDZE Apt Elev	<b>4301</b> <b>1801</b> <b>1803</b>
--	------------------------	-----------------------------	---

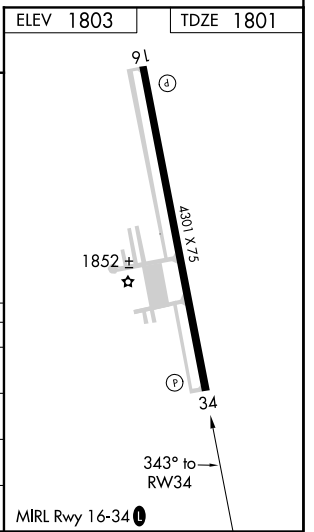
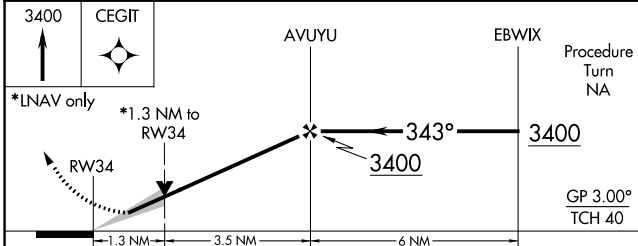
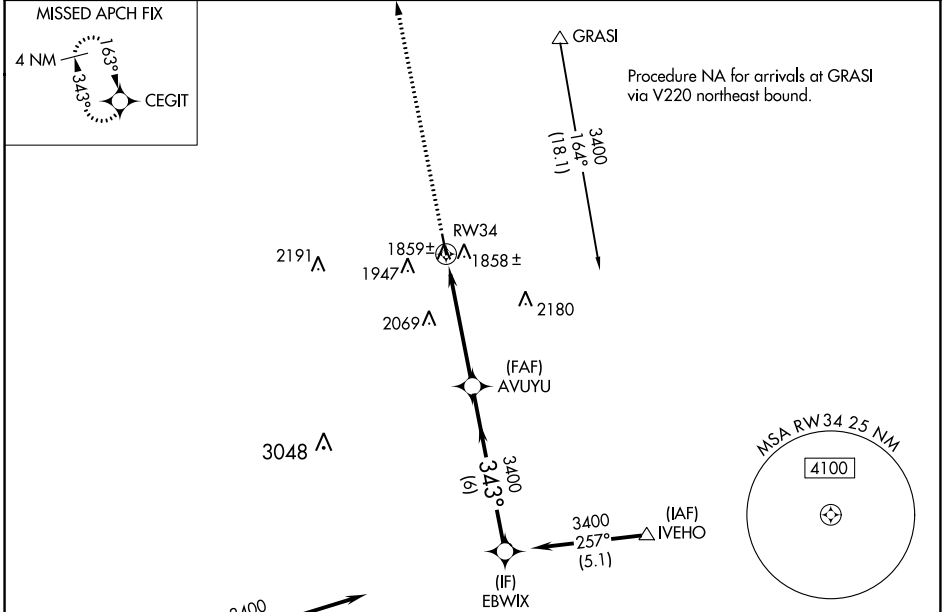
# RNAV (GPS) RWY 34

AURORA MUNI-AL POTTER FIELD (AUH)

**⚠** Baro-VNAV NA when using Grand Island altimeter setting. For uncompensated Baro-VNAV systems, LNAV/VNAV NA below -18°C (0°F) or above 54°C (130°F). DME/DME RNP-0.3 NA. When local altimeter setting not received, use Grand Island altimeter setting and increase all DA 41 feet and all MDA 60 feet. VDP NA when using Grand Island altimeter setting.

**MISSED APPROACH:** Climb to 3400 direct CEGIT and hold.

AWOS-3 <b>121.225</b>	MINNEAPOLIS CENTER <b>119.4 278.8</b>	UNICOM <b>122.8 (CTAF) 0</b>
--------------------------	--	---------------------------------



CATEGORY	A	B	C	D
LPV DA	2051-1	250 (300-1)		NA
LNAV/VNAV DA	2129-1¼	328 (400-1¼)		NA
LNAV MDA	2260-1	459 (500-1)		NA
<b>C</b> CIRCLING	2300-1 497 (500-1)	2340-1 537 (600-1)		NA

NC-2, 16 JUN 2022 to 14 JUL 2022

NC-2, 16 JUN 2022 to 14 JUL 2022