

|  |                        |   |             |
|--|------------------------|---|-------------|
| WAAS<br>CH <b>65636</b><br><b>W17A</b> | APP CRS<br><b>173°</b> | Rwy Idg<br>TDZE <b>639</b><br>Apt Elev <b>656</b> | <b>6034</b> |
|--|------------------------|---|-------------|

# RNAV (GPS) RWY 17

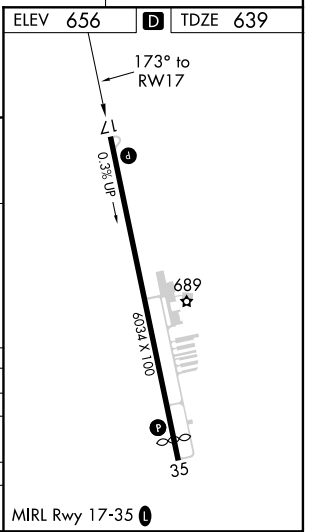
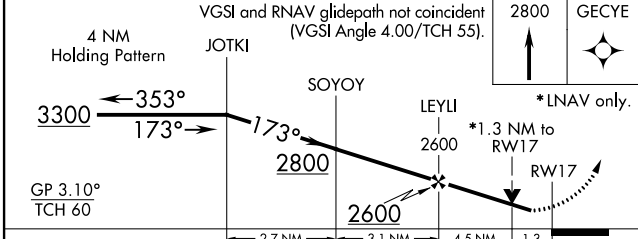
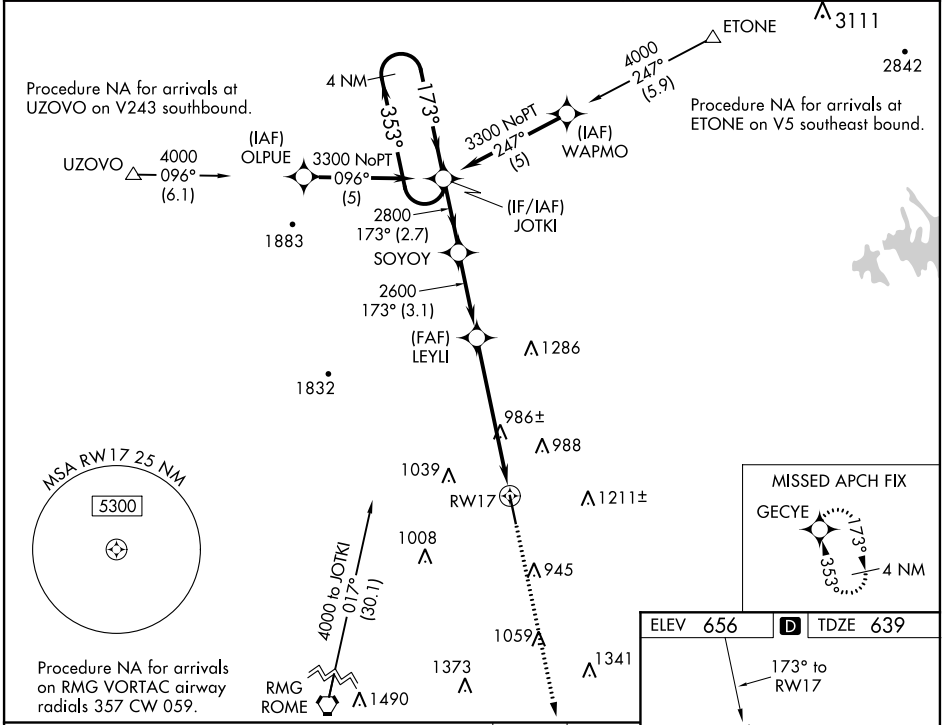
TOM B DAVID FLD (CZL)

RNP APCH.

**NA** Baro-VNAV and VDP NA when using Rome altimeter setting. For uncompensated Baro-VNAV systems, LNAV/VNAV NA below -15°C (5°F) or above 45°C (113°F). When local altimeter setting not received, use Rome altimeter setting and increase all DA 31 feet and all MDA 40 feet; increase LNAV/VNAV all Cats visibility and LNAV Cat C/D visibility 1/8 mile, and Circling Cat C visibility 1/4 mile. Rwy 17 helicopter visibility reduction below 3/4 SM NA.

**MISSED APPROACH:**  
Climb to 2800 direct GECYE and hold.

|                          |  |                               |
|--------------------------|--|-------------------------------|
| AWOS-3<br><b>119.975</b> | ATLANTA CENTER<br><b>124.5 270.325</b> | UNICOM<br><b>122.8 (CTAF)</b> |
|--------------------------|--|-------------------------------|



| CATEGORY     | A      | B           | C             | D            |
|--------------|--------|-------------|---------------|--------------|
| LPV DA       |        | 930-1       | 291 (300-1)   |              |
| LNAV/VNAV DA |        | 1100-1½     | 461 (500-1½)  |              |
| LNAV MDA     | 1240-1 | 601 (600-1) | 1240-1¾       | 601 (600-1¼) |
| CIRCLING     | 1320-1 | 664 (700-1) | 1580-2¾       | 1580-3       |
|              |        |             | 924 (1000-2¼) | 924 (1000-3) |

SE-4, 16 JUN 2022 to 14 JUL 2022

SE-4, 16 JUN 2022 to 14 JUL 2022