

APP CRS	Rwy Idg	5002
220°	TDZE	755
	Apt Elev	757

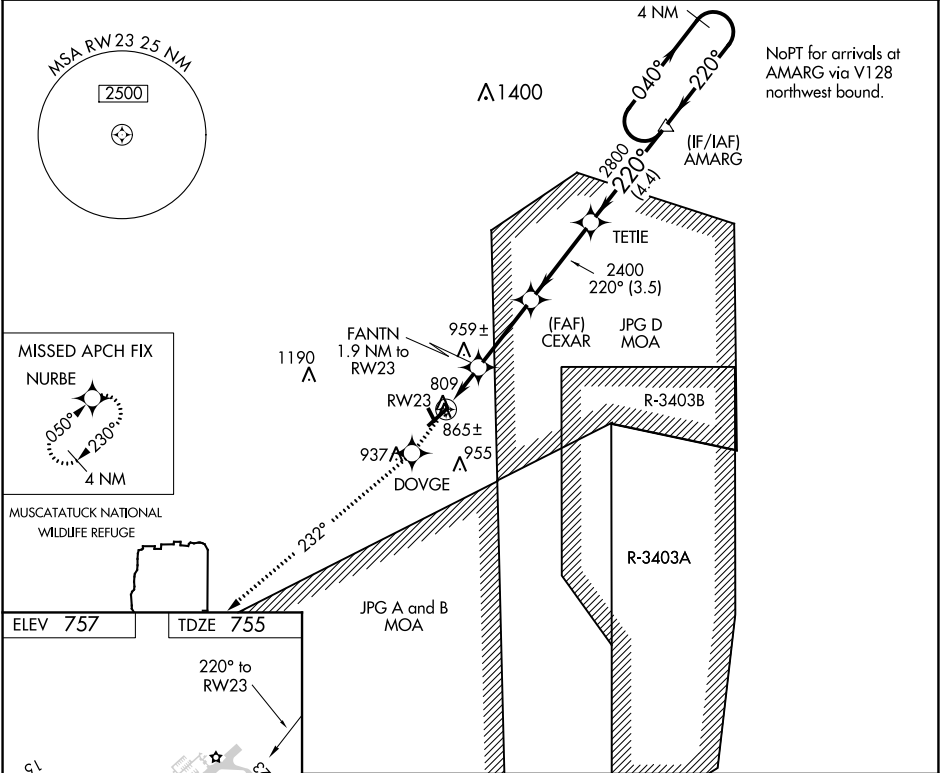
RNAV (GPS) Y RWY 23

NORTH VERNON (OVO)

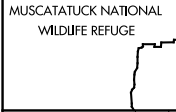
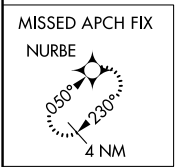
NA DME/DME RNP-0.3 NA. When local altimeter setting not received, use Shelbyville altimeter setting and increase all MDAs 100 feet, increase LNAV Cat C and Circling Cat C visibility ¼ SM. VDP NA when using Shelbyville altimeter setting.

MISSED APPROACH:
Climb to 2700 direct DOVGE and via track 232° to NURBE and hold.

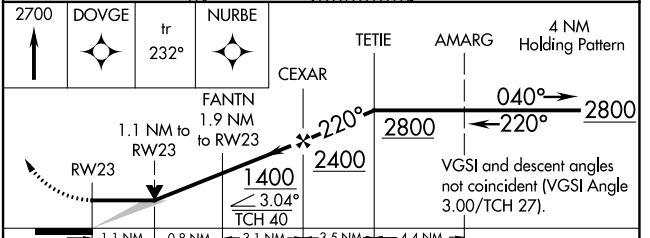
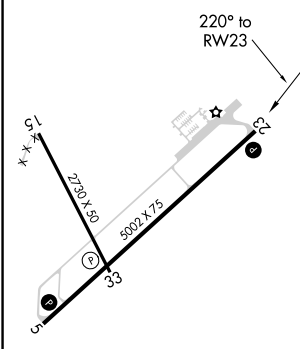
AWOS-3 120.625	INDIANAPOLIS CENTER 124.775 269.45	UNICOM 122.7 (CTAF) 0
--------------------------	--	---------------------------------



NoPT for arrivals at AMARG via V128 northwest bound.



ELEV 757	TDZE 755
----------	----------



CATEGORY	A	B	C	D
LNAV MDA	1120-1 365 (400-1)			NA
CIRCLING	1180-1 423 (500-1)	1300-1 543 (600-1)	1300-1½ 543 (600-1½)	NA

EC-2, 16 JUN 2022 to 14 JUL 2022

EC-2, 16 JUN 2022 to 14 JUL 2022