

WAAS CH <b>42638</b> <b>W09A</b>	APP CRS <b>093°</b>	Rwy Idg <b>4201</b> TDZE <b>708</b> Apt Elev <b>708</b>
--	------------------------	--

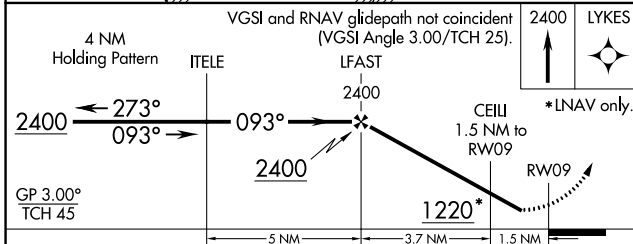
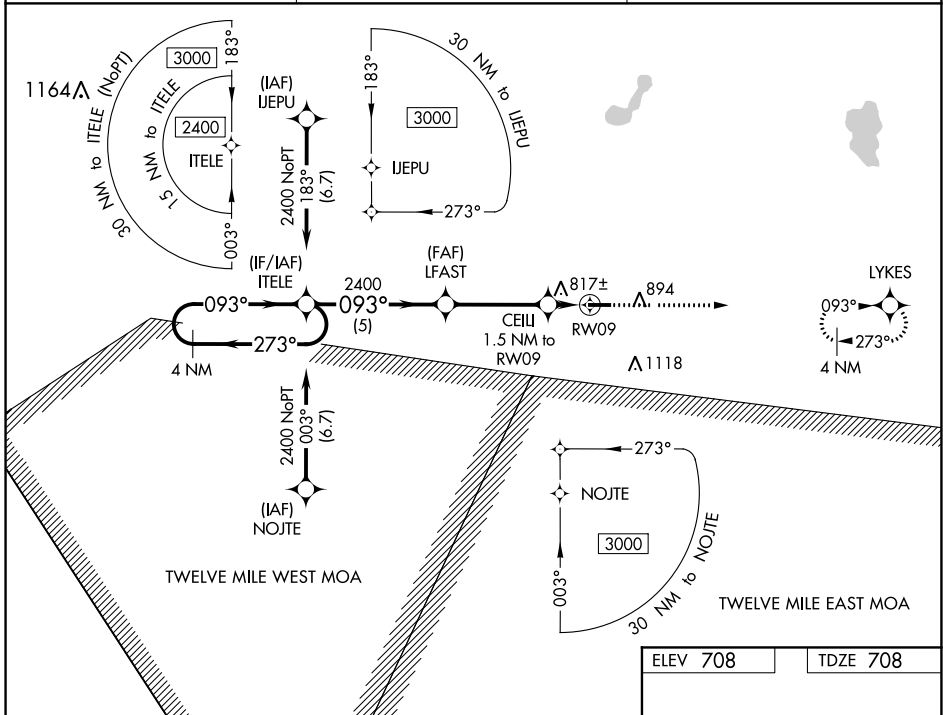
# RNAV (GPS) RWY 9

ARENS FLD (RWN)

**Baro-VNAV NA.** Use Knox altimeter setting; when not received, use Rochester altimeter setting and increase all DA/MDA 20 feet and LNAV Cat C visibility 1/8 mile.  
**NA** DME/DME RNP-0.3 NA. Helicopter visibility reduction below 3/4 SM NA.

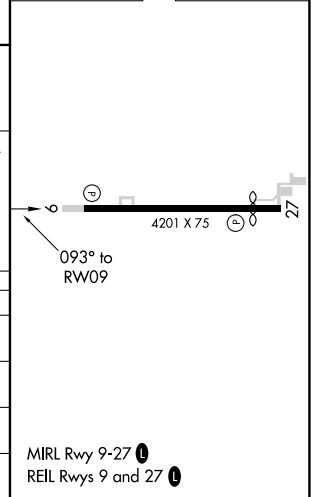
**MISSED APPROACH:** Climb to 2400 direct LYKES and hold.

OXI AWOS-3 <b>135.775</b>	SOUTH BEND APP CON * <b>132.05 257.8</b>	UNICOM <b>122.8 (CTAF)</b>
------------------------------	---	-------------------------------



ELEV 708	TDZE 708
----------	----------

CATEGORY	A	B	C	D
LPV DA	995-1 287 (300-1)			NA
LNAV/VNAV DA	1132-1½ 424 (500-1½)			NA
LNAV MDA	1120-1 412 (500-1)		1120-1⅛ 412 (500-1⅛)	NA
<b>C</b> CIRCLING	1240-1 532 (600-1)		1480-2¼ 772 (800-2¼)	NA



EC-2, 16 JUN 2022 to 14 JUL 2022

EC-2, 16 JUN 2022 to 14 JUL 2022

MIRL Rwy 9-27  
REIL Rws 9 and 27