

VOR/DME OXI <b>115.6</b> Chan <b>103</b>	APP CRS <b>172°</b>	Rwy Idg TDZE Apt Elev	<b>N/A</b> <b>N/A</b> <b>708</b>
--	------------------------	-----------------------------	--

# VOR/DME-A

ARENS FLD (RWN)

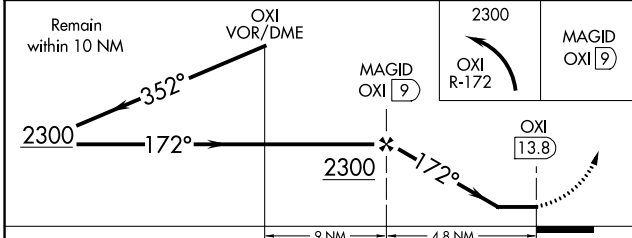
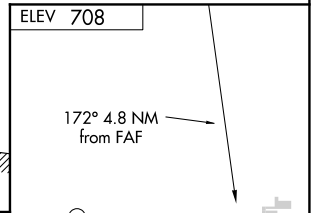
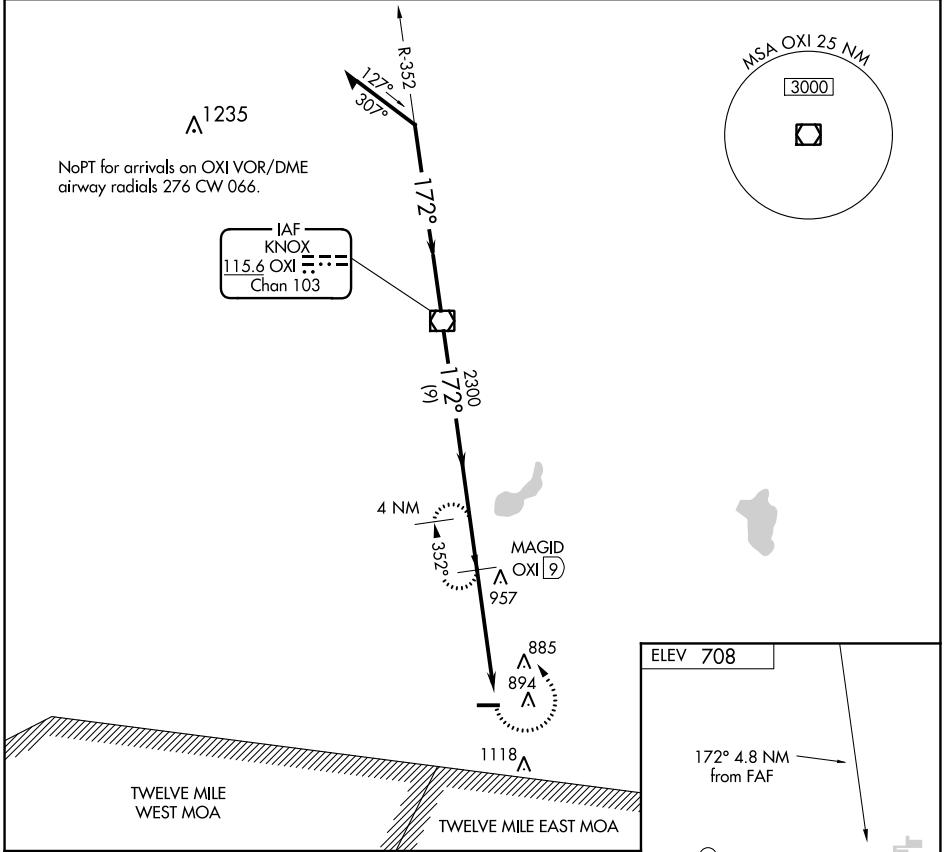
**▲** NA Use Knox altimeter setting; when not received, use Rochester altimeter setting and increase all MDA 20 feet.

MISSED APPROACH: Climbing left turn to 2300 via OXI R-172 to MAGID/OXI 9 DME and hold.

OXI AWOS-3  
**135.775**

SOUTH BEND APP CON ★  
**132.05 257.8**

UNICOM  
**122.8** (CTAF) **①**



CATEGORY	A	B	C	D
<b>①</b> CIRCLING	1280-1	569 (600-1)	1480-2¼ 772 (800-2¼)	NA

REIL Rwy 9 and 27 **①**  
MRL Rwy 9-27 **①**

EC-2, 16 JUN 2022 to 14 JUL 2022

EC-2, 16 JUN 2022 to 14 JUL 2022