

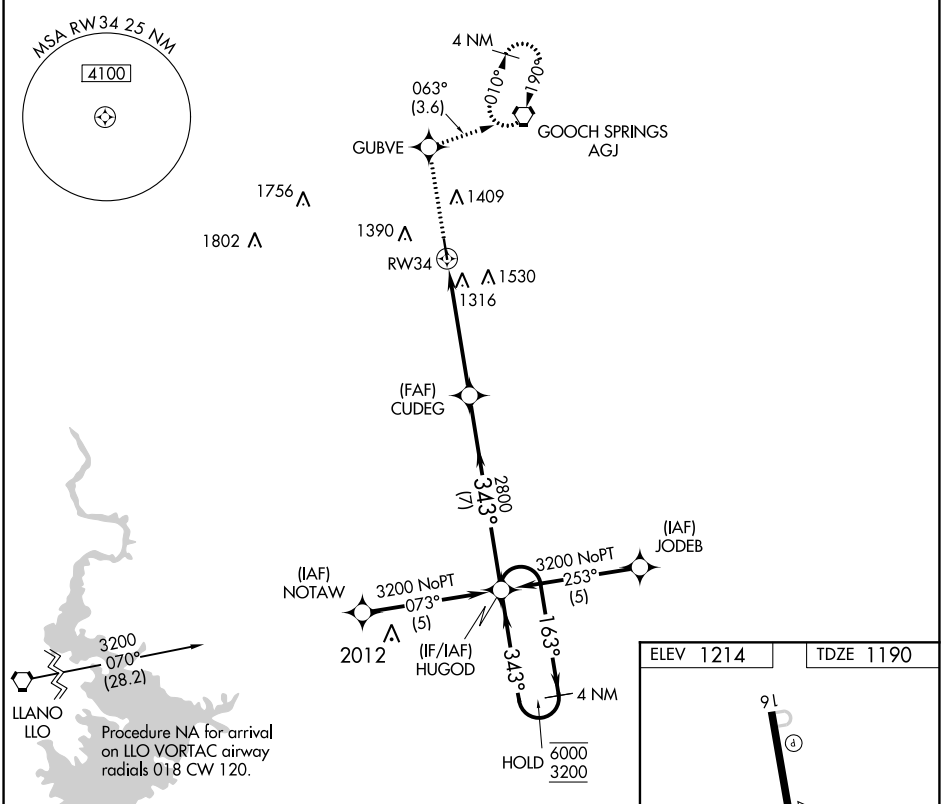
APP CRS	Rwy Idg	4202
343°	TDZE	1190
	Apt Elev	1214

RNAV (GPS) RWY 34

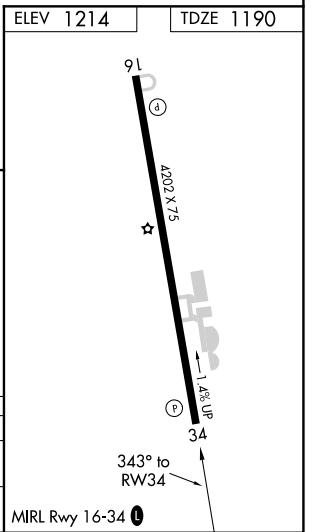
LAMPASAS (LZZ)

RNP APCH.	MISSED APPROACH: Climb to 3000 direct GUBVE and on track 063° to AGJ VORTAC and hold.
<p>▼ Circling Rwy 16 NA at night. Rwy 34 helicopter visibility reduction below ¾ SM NA.</p>	

AWOS-3 119.075	GRAY APP CON 120.075 323.15	UNICOM 122.8 (CTAF) 0
--------------------------	---------------------------------------	---------------------------------



3000	GUBVE	tr 063°	AGJ	HUGOD	4 NM Holding Pattern
					163° → 6000 ← 343° 3200
			CUDEG		
					1.3 NM to RW34 3.04° TCH 40 2800
					1.3 NM 3.7 NM 7 NM
CATEGORY	A	B	C	D	
RNAV MDA	1620-1	430 (500-1)	1620-1¼ 430 (500-1¼)	NA	
CIRCLING	1680-1 466 (500-1)	1880-1 666 (700-1)	1880-1¾ 666 (700-1¾)	NA	



SC-3, 16 JUN 2022 to 14 JUL 2022

SC-3, 16 JUN 2022 to 14 JUL 2022