

WAAS CH 90216 W27A	APP CRS 274°	Rwy Idg 5390 TDZE 552 Apt Elev 569
--	------------------------	---

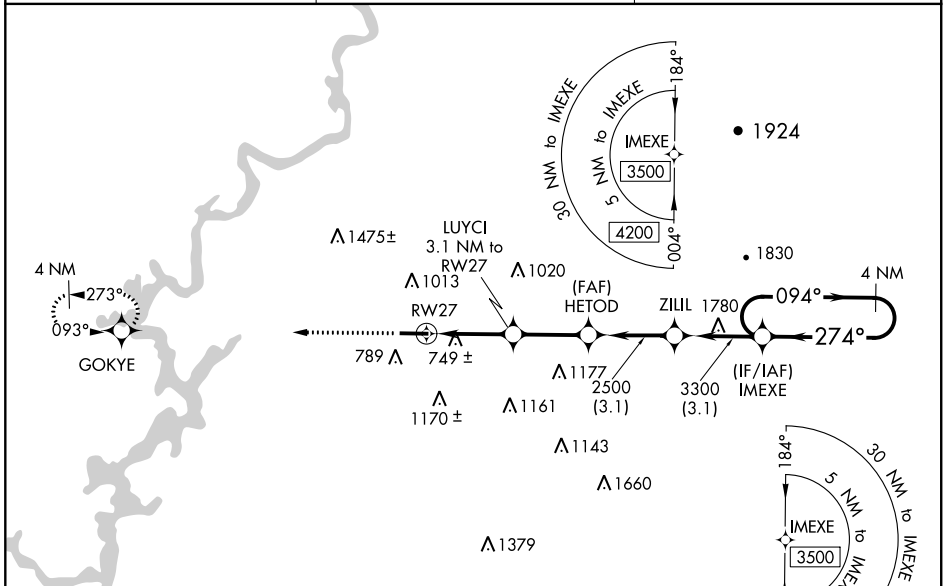
RNAV (GPS) RWY 27

MERKEL FIELD SYLACAUGA MUNI (SCD)

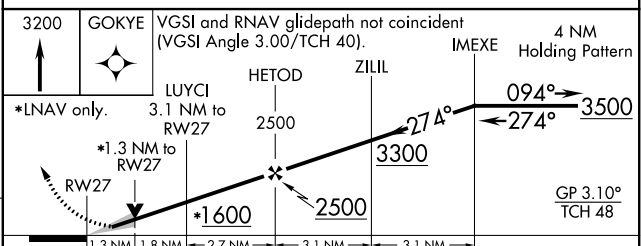
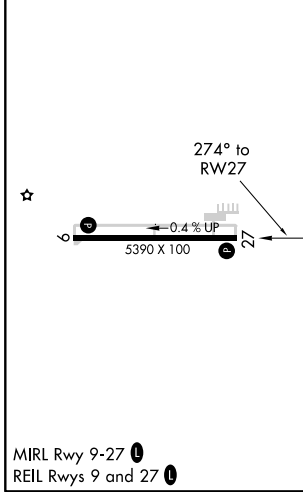
▼ For uncompensated Baro-VNAV systems, LNAV/VNAV NA below -16°C (4°F) or above 48°C (118°F). Baro-VNAV and VDP NA when using Birmingham altimeter setting.
 ▲ DME/DME RNP-0.3 NA. When local altimeter setting not received, use Birmingham altimeter setting and increase LPV DA to 889 feet, LNAV/VNAV DA to 1161 feet, and all visibilities 3/8 mile. Increase all MDA 100 feet and LNAV Cat C and D visibilities 1/2 mile.

MISSED APPROACH:
Climb to 3200 direct GOKYE and hold.

AWOS-3PT 119.125	BIRMINGHAM APP CON 123.8 256.8	UNICOM 122.8 (CTAF) 0
----------------------------	--	---------------------------------



ELEV 569	TDZE 552
----------	----------



CATEGORY	A	B	C	D
LPV DA		802-3/4	250 (300-3/4)	
LNAV/VNAV DA		1074-13/4	522 (600-13/4)	
LNAV MDA	1000-1	448 (500-1)	1000-13/8	448 (500-13/8)
<input checked="" type="checkbox"/> CIRCLING	1140-1 571 (600-1)	1400-11/4 831 (900-11/4)	1620-3 1051 (1100-3)	1700-3 1131 (1200-3)

SE-4, 16 JUN 2022 to 14 JUL 2022

SE-4, 16 JUN 2022 to 14 JUL 2022