

WAAS CH <b>45837</b> W14A	APP CRS <b>143°</b>	Rwy Idg TDZE Apt Elev	<b>3455</b> <b>1155</b> <b>1157</b>
---------------------------------	------------------------	-----------------------------	---

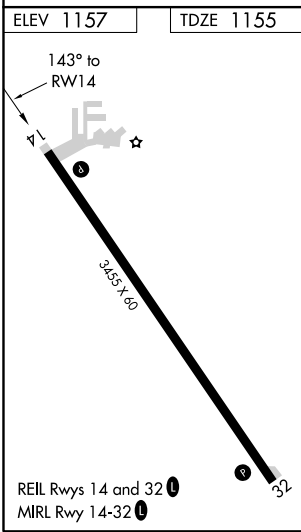
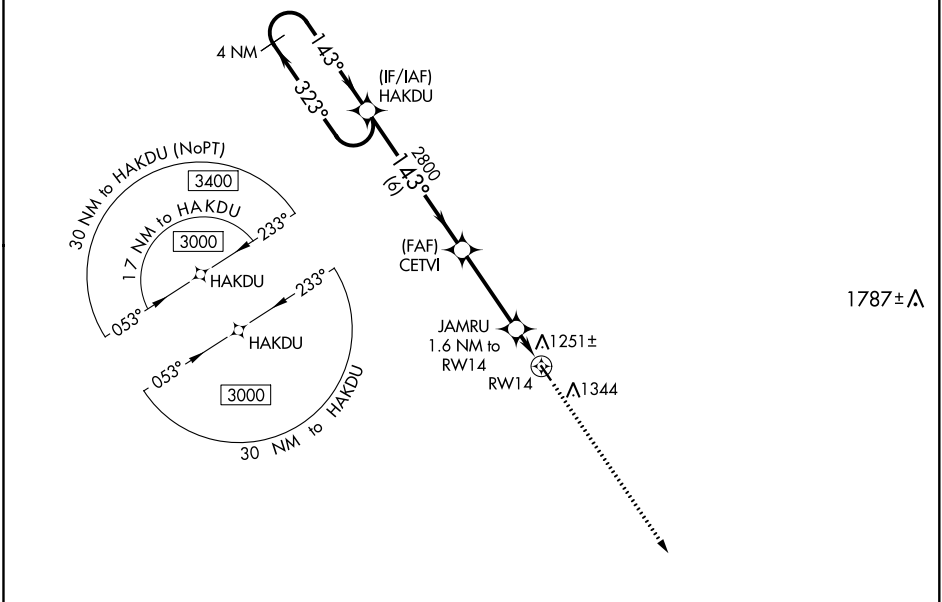
# RNAV (GPS) RWY 14

CLARION MUNI (CAV)

**⚠** For uncompensated Baro-VNAV systems, LNAV/VNAV NA below -17°C (2°F) or above 54°C (130°F). DME/DME RNP-0.3 NA. When local altimeter setting not received, use Fort Dodge altimeter setting and increase all DA 52 feet, all MDA 60 feet; increase LPV and LNAV/VNAV all Cats visibility 1/8 mile. Baro-VNAV and VDP NA when using Fort Dodge altimeter setting. Helicopter visibility reduction below 3/4 SM NA.

MISSED APPROACH: Climb to 3000 direct FEGNU and hold.

AWOS-3 <b>126.575</b>	MINNEAPOLIS CENTER <b>134.0 288.3</b>	UNICOM <b>122.8 (CTAF) 0</b>
--------------------------	--	---------------------------------



ELEV 1157	TDZE 1155	VGSIs and RNAV glidepath not coincident (VGSi Angle 3.00/TCH 40).			
3000	2800	2800	1700	3000	FEGNU
GP 3.00°	TCH 40				
		6 NM	3.5 NM	0.6	1 NM
CATEGORY	A	B	C	D	
LPV DA	1405-1	250 (300-1)			NA
LNAV/VNAV DA	1415-1	260 (300-1)			NA
LNAV MDA	1520-1	365 (400-1)			NA
<b>C</b> CIRCLING	1680-1	523 (600-1)			NA

NC-3, 16 JUN 2022 to 14 JUL 2022

NC-3, 16 JUN 2022 to 14 JUL 2022