

CLARION, IOWA

AL-6369 (FAA)

19311

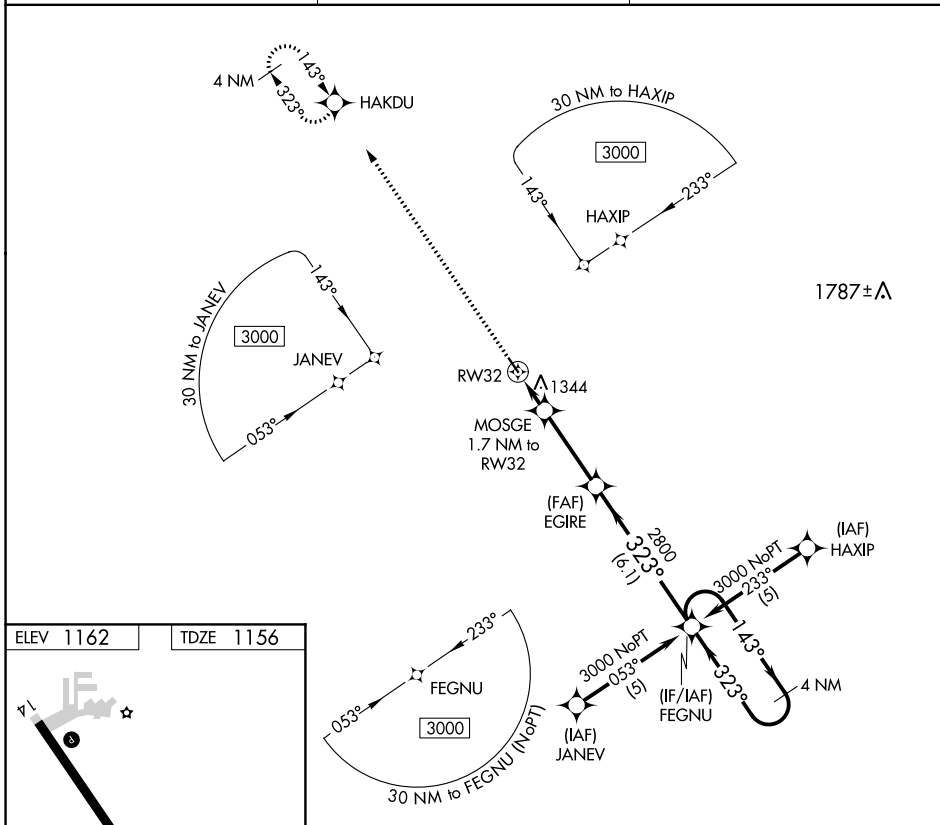
APP CRS 323°	Rwy Idg 3455
	TDZE 1156
	Apt Elev 1162

RNAV (GPS) RWY 32

CLARION MUNI (CAV)

RNP APCH.	MISSED APPROACH: Climb to 3000 direct HAKDU and hold.
<p>▼ When local altimeter setting not received, use Fort Dodge altimeter setting and increase all MDA 60 feet. Rwy 32 helicopter visibility reduction below ¼ SM NA.</p>	

AWOS-3 126.575	MINNEAPOLIS CENTER 134.0 288.3	UNICOM 122.8 (CTAF) 0
--------------------------	--	---------------------------------



ELEV 1162	TDZE 1156
-----------	-----------

REIL Rwy 14 and 32 0
MIRL Rwy 14-32 0

3000 HAKDU	VGSi and descent angles not coincident (VGSi Angle 3.00/TCH 43).		FEGNU	4 NM Holding Pattern
↑	EGIRE		143° → 3000	← 323°
MOSGE 1.7 NM to RW32	EGIRE		2800	
1740	3.3 NM	6.1 NM		
323° to RW32				
3.04° TCH 40				
CATEGORY	A	B	C	D
LNAV MDA	1600-1 444 (500-1)		NA	

NC-3, 16 JUN 2022 to 14 JUL 2022

NC-3, 16 JUN 2022 to 14 JUL 2022

CLARION, IOWA
Orig-A 07NOV19

42°44'N-93°46'W

CLARION MUNI (CAV) RNAV (GPS) RWY 32